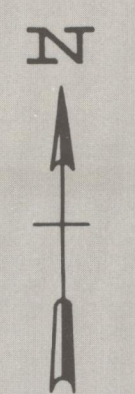


LAND-USE IN IOWA

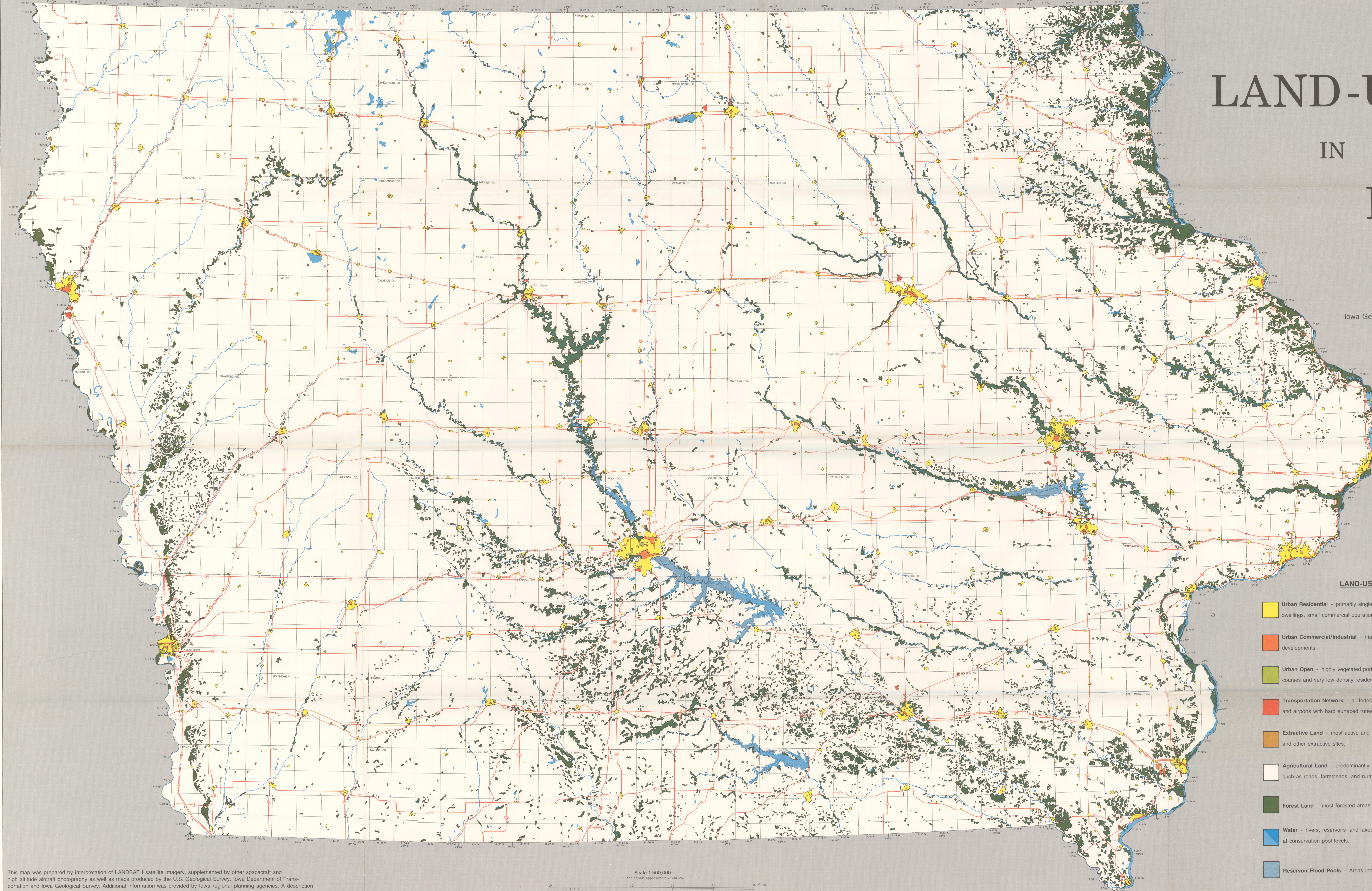
1976

Iowa Geological Survey Remote Sensing Laboratory
Raymond R. Anderson
M. Patrick McAdams
Bernard E. Hoyer



LAND-USE CATEGORIES

- Urban Residential** - primarily single family dwellings but also includes multiple family dwellings, small commercial operations, schools, etc.
- Urban Commercial/Industrial** - major areas of business, industry and other intensive urban developments.
- Urban Open** - highly vegetated portions of urban areas such as parks, cemeteries, golf courses and very low density residential developments.
- Transportation Network** - all federal highways, selected state highways, principal rail lines and airports with hard surfaced runways at least 1500 feet long.
- Extractive Land** - most active and many inactive quarries, strip mines, sand and gravel pits and other extractive sites.
- Agricultural Land** - predominantly crop and pasture land, but also includes other features such as roads, farmsteads and rural residential areas.
- Forest Land** - most forested areas larger than 10 acres.
- Water** - rivers, reservoirs and lakes and ponds larger than 10 acres. Reservoirs are mapped at conservation pool levels.
- Reservoir Flood Pools** - Areas inundated at maximum reservoir capacity.



This map was prepared by interpretation of LANDSAT I satellite imagery, supplemented by other spacecraft and high altitude aircraft photography as well as maps produced by the U.S. Geological Survey, Iowa Department of Transportation and Iowa Geological Survey. Additional information was provided by Iowa regional planning agencies. A description of the techniques and materials used in the preparation of this map may be found in Iowa Geological Survey Technical Information Series No. 4, Land-use in Iowa: 1976, An Explanation of the Map.

Scale 1:500,000
1 inch equals approximately 8 miles
0 10 20 30 40 50 Miles
0 10 20 30 40 50 Kilometers