

Jefferson Groundwater Investigation Greene County, Iowa



Iowa Geological and Water Survey
Technical Information Series 56



Iowa Department of Natural Resources
Chuck Gipp, Director

December 2013

*Cover photo: Spring Lake, Greene County
Printed in-house on recycled paper.*

Jefferson Groundwater Investigation Greene County, Iowa

Prepared by

Jason A. Vogelgesang

J. Michael Gannon

Chad L. Fields

**Iowa Geological and Water Survey
Technical Information Series 56**



**Iowa Department of Natural Resources
Chuck Gipp, Director**

December 2013

TABLE OF CONTENTS

INTRODUCTION	1
SCOPE OF WORK.....	2
GEOLOGIC HISTORY AND SETTING.....	3
BURIED SAND AND GRAVEL AQUIFERS	4
GEOLOGIC SITE ASSESSMENT	5
GEOPHYSICAL INVESTIGATION	5
Field Data Collection	5
Data Inversion	9
Data Synthesis	9
HYDROGEOLOGIC ANALYSES AND GROUNDWATER MODELING	12
CONCLUSIONS.....	14
FURTHER STUDIES AND LESSONS LEARNED	14
REFERENCES	16
APPENDIX A: WELLS USED	17
APPENDIX B: PUMP TESTS	21

LIST OF FIGURES

Figure 1.	Des Moines Lobe landform region and associated glacial advances and moraines. A red circle around Jefferson represents the four mile study area.	3
Figure 2.	Map showing first bedrock units encountered underlying surficial geologic material near Jefferson.	4
Figure 3.	Location of geologic data points used. Labels indicate sand and gravel thickness in feet and bedrock surface elevation in feet above mean sea level.	6
Figure 4.	Interpreted aquifer boundary and sand and gravel thickness map.	7
Figure 5.	Map showing ER transect locations.	8
Figure 6.	ER model results for the east-west transect. Dashed lines indicate interpreted geologic contacts. Jefferson wells 7 and 8 are drawn to show their approximate location. Known geologic contacts from well records are shown by a solid line.	10
Figure 7.	ER model results for the north-south transect. Dashed lines indicate interpreted geologic contacts. Note highly resistive alluvium in upper left of model.	11
Figure 8.	Original and revised 2-, 5-, and 10-yr. capture zones for the City of Jefferson active wells. The revised capture zones contain a significantly smaller and targeted footprint when compared to the original.	13

LIST OF TABLES

Table 1.	Community source water areas in 2012.	1
-----------------	---	---

ACKNOWLEDGEMENTS

The authors would like to acknowledge the contributions of individuals assisting in the production of this report. Paul Richardson, City of Jefferson, provided background information and support during the project. Robert Rowden, Iowa Geological and Water Survey, and Brent Beste, Iowa Rural Water Association, assisted with field geophysical data acquisition. Much of the previous understanding of the buried sand and gravel aquifer near Jefferson is based on bedrock surface data completed by Raymond Anderson, as well as previous Iowa Geological and Water Survey geologists. Deborah Quade contributed to the Quaternary geology background information. Well locations used in the report were updated by Iowa Geological and Water Survey students Matt Bopes, Carolyn Koebel, and Kelli Naughton. Tim Healy, Greene County, provided several drilling records to assist the study. Technical and editorial reviews were conducted by Keith Schilling and Lynette Seigley of the Iowa Geological and Water Survey. The report layout was completed by Mindy Kralicek, Iowa Department of Natural Resources.

INTRODUCTION

The Iowa Source Water Protection (SWP) program, funded by the United States Environmental Protection Agency, provides an established method for a community water supply to take action in protecting their source of drinking water before water quality or quantity issues arise (Iowa Department of Natural Resources, 2012). Communities that take preventive measures through this voluntary program can have health and financial benefits for their citizens by ensuring that naturally safe, minimally treated drinking water is readily available.

To become successful in SWP a community must: 1) know the source of its drinking water, 2) have an accurate inventory of potential contaminant sources and pathways to the source water area, and 3) proactively address potential drinking water issues of concern. The Iowa SWP program strives to protect all public drinking water from contamination. The program also provides focused assistance to many Iowa communities.

To aid communities in SWP efforts, the Iowa Department of Natural Resources (DNR) Iowa Geological and Water Survey (IGWS) utilizes computer models and established methods to characterize the source water areas for all active community water supplies in the state. Groundwater SWP areas in Iowa are commonly characterized by aquifer with, in decreasing order of use, Silurian-Devonian, alluvial, Cambrian-Ordovician, buried sand and gravel, Dakota, and Mississippian aquifers supplying water to Iowa citizens (Table 1). The SWP program annually updates assessments on all public water supplies that have drilled a new well, significantly changed pumping, or discontinued an active well. Additionally, the SWP program annually updates geospatial inventories of known contaminants, wells, land use, and nitrate-nitrogen (N) trends to help willing communities rank and address their unique source water concerns.

Table 1. Community source water areas in 2012.

Source Aquifer	# of Communities
Silurian-Devonian	302
Alluvial	170
Cambrian-Ordovician	151
Buried Sand and Gravel	115
Miscellaneous	76
Dakota	70
Mississippian	61
Total	945

Fourth in use among groundwater community supplies, “Buried Sand and Gravel” (formerly referred to as “Pleistocene” by the Iowa SWP program) source aquifers account for approximately 12 percent of community source water areas in Iowa and provide roughly 230,000 Iowans in communities with a source of drinking water (Groundwater Capture Zones - DNR Geological Information Systems Library). Despite its extensive use as a source of drinking water, SWP delineations for buried sand and gravel systems have historically been of limited use as an accurate estimate of a community’s source of drinking water. Due to limitations of data, methodology, and models, many buried sand and gravel systems have imprecise 2,500 ft. setback distances or concentric “time-of-travel” circle delineations. Conversely, the five other major aquifers typically have established aquifer dimensions which give greater confidence in the capture zone and reduce the area needed for a community to implement source water protection practices.

BACKGROUND

The City of Jefferson, Iowa, obtains its water from six active wells in a buried sand and gravel aquifer. The wells vary in depth

from 150 to 180 ft. below the ground surface. Many buried sand and gravel aquifers, like the aquifer that Jefferson uses, are remnants of historic river deposits covered by glacial till or interbedded sand and gravel within till layers. The Iowa DNR IGWS initiated a geologic, geophysical, and hydrogeologic investigation to gather and summarize aquifer characteristics for the buried sand and gravel aquifer near Jefferson.

This report details the scientific work completed by Iowa DNR IGWS and delineates the source water capture zones for the City of Jefferson. These areas were created to assist with best management practices to protect the quality of groundwater and reduce the potential for surface contamination that could impact groundwater supplies.

The objective of this investigation is to refine source water capture zones, a computer-modeled source water area, typically using 2-, 5- and 10-yr. time-of-travel periods, for the City of Jefferson. A source water assessment, completed in 2012 for the City of Jefferson, contained fixed radius circle capture zones due to a lack of aquifer information. Unlike regional bedrock aquifers that have had published studies summarizing aquifer characteristics, published studies on sand and gravel aquifers are limited. Lessons learned after completion of the Jefferson investigation will be used to direct work on other buried sand and gravel aquifers, which account for approximately 11 percent of active public wells in Iowa (Public Wells – DNR GIS Library). The investigation will inventory prior published and unpublished reports, all available geologic and hydrologic data, as well as prompt the collection of new geologic and geophysical data to refine capture zones. Alongside refined capture zones, a detailed well inventory within the capture zones can be determined.

Jefferson was chosen for this study for several reasons. The city expressed interest in completing a SWP plan, requiring refined

capture zones and aquifer characteristics. The study area contained a relatively high concentration of geologic data from well records when compared to other buried sand and gravel aquifer sites. Additionally, involvement from city and county leaders allowed for a collaborative effort. The investigation was focused near Jefferson wells 7 and 8 to provide more aquifer information in that area. Investigation results are intended to provide aquifer information to guide Jefferson's Source Water Plan and its implementation.

SCOPE OF WORK

This groundwater investigation will:

- a) Collect, assess, and improve available geospatial information in the area, including information from the Iowa DNR Private Well Tracking System and GEOSAM databases, as well as add to existing information through paper records existing in Greene County office records.
- b) Use lithologic and stratigraphic data collected from above sources to interpret local bedrock elevation with the extent and thickness of buried sand and gravel in the area immediately surrounding Jefferson.
- c) Use electrical resistivity (ER) geophysical imaging to interpret buried sand and gravel extent and thickness in the region near Jefferson wells 7 and 8.
- d) Estimate the local dimension of the buried sand and gravel aquifer using information from b) and c).
- e) Estimate groundwater direction and properties of the buried sand and gravel aquifer using local observation well water levels and a pump test.
- f) Use information from d) and e) to more accurately model the capture zone for the City of Jefferson's SWP planning and implementation efforts.

Results from the Jefferson investigation will be compiled to improve SWP program methods

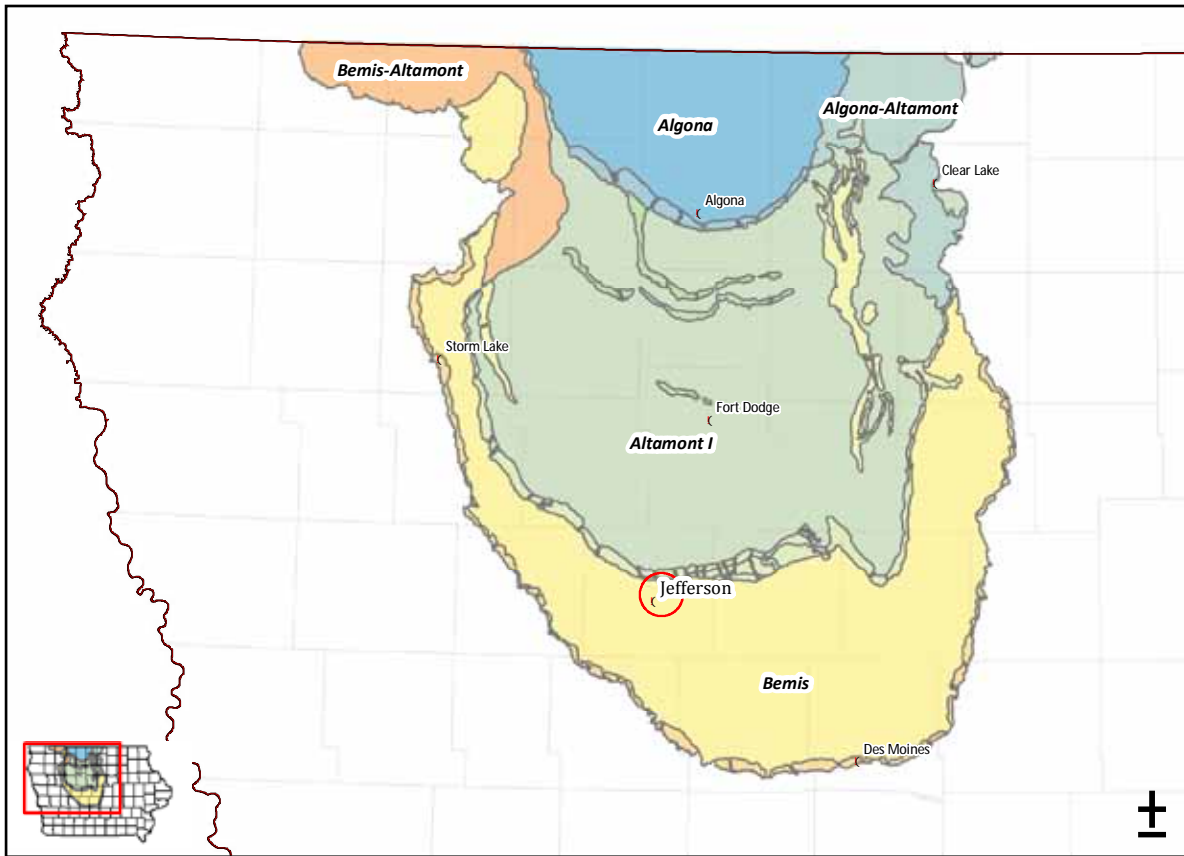


Figure 1. Des Moines Lobe landform region and associated glacial advances and moraines. A red circle around Jefferson represents the four mile study area.

and modeling for all communities that choose to enter the SWP program and currently use buried sand and gravel aquifers as a water source.

GEOLOGIC HISTORY AND SETTING

The Jefferson study area is located on the Des Moines Lobe (DML), the most recently glaciated area of the state. The DML is the product of a Late Wisconsin lobate extension of the Laurentide Ice Sheet that flowed down a regional topographic low into Iowa approximately 15,000 years ago. The study area is bounded by the Bemis Moraine, the terminal moraine of the DML dated approximately 14,500 to 14,000 years ago, and the slightly younger Altamont Moraine Complex dated

approximately 13,500 years ago.

Jefferson lies on the Bemis till plain. The Bemis Moraine is approximately fifteen miles southwest of Jefferson and the slightly younger Altamont I Moraine is approximately four miles to the north (Figure 1). The DML landform is bounded by pre-Wisconsin topographic highs on the east (Mississippian bedrock) and west (pre-Wisconsin glacial deposits comprising the Prairie Coteau).

In the study area, bedrock consists of Pennsylvanian-age sedimentary rocks belonging to the Lower and Upper Cherokee Groups (Figure 2) that consist of interbedded shale, coal, and limestone. Cretaceous rocks belonging to the Windrow Formation occasionally overlie Pennsylvanian rocks, and can be found beneath surficial material approximately three miles

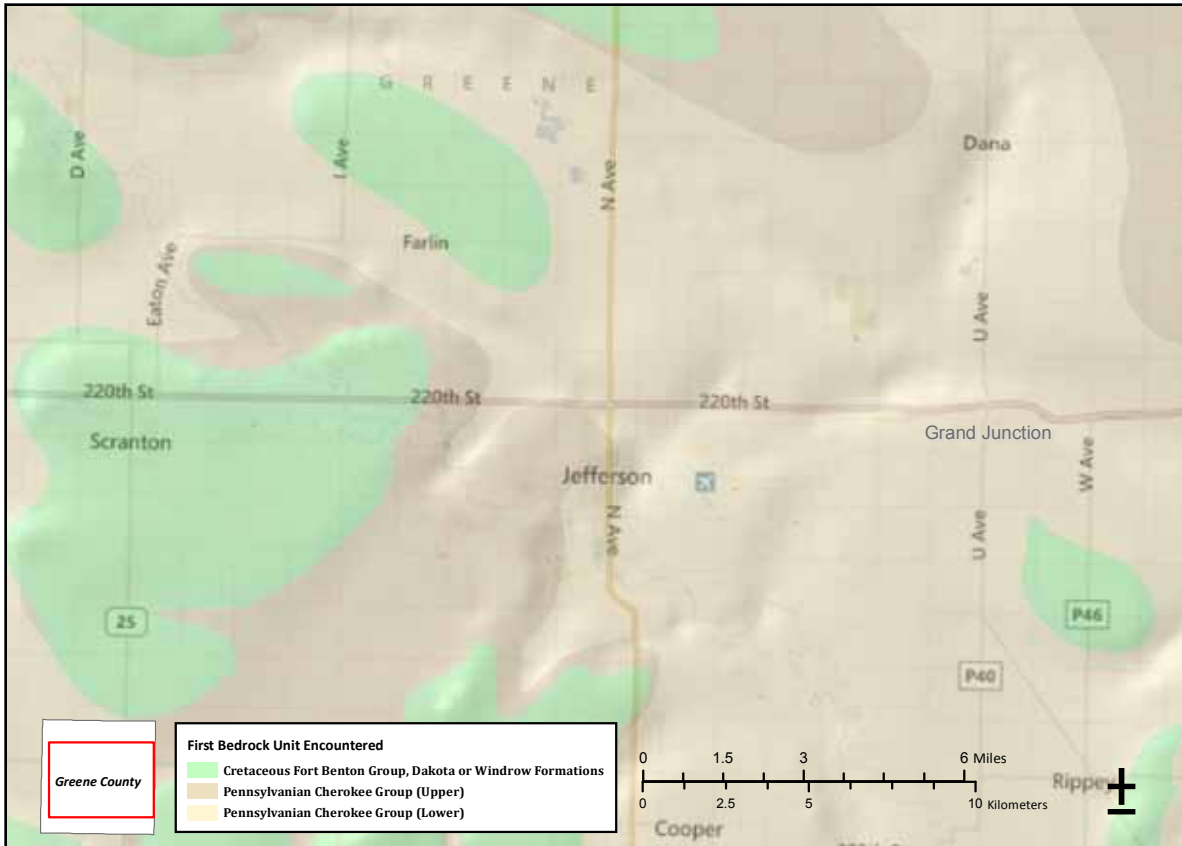


Figure 2. Map showing first bedrock units encountered underlying surficial geologic material near Jefferson.

west and south of town. Exposed bedrock is uncommon in the Jefferson area.

Surficial deposits that overlie bedrock consist of Pre-Illinoian and Wisconsin-age glacial and glaciofluvial sediments that range from less than 150 ft. to greater than 170 ft. in thickness. In the study area, the Late Wisconsin-age glacial and glaciofluvial sediment package can vary in thicknesses, and is underlain by the much older and undifferentiated Pre-Illinoian-age glacial, fluvial or colluvial sediments.

BURIED SAND AND GRAVEL AQUIFERS

Many buried sand and gravel aquifers, like the aquifer that is used by the City of Jefferson, are remnant deposits from historic rivers

that were covered by glacial till or consist of interbedded sand and gravel within till layers. Physical aquifer information such as thickness, extents, and variability of coarse deposits is often limited in sand and gravel aquifers. Unlike alluvial aquifers where well-defined valleys can delineate aquifer extents, many buried sand and gravel aquifers do not have a valley or depression visible from the land surface and can be laterally discontinuous. Much of what is known of these systems is obtained from the drilling of water wells. Similar to alluvial aquifers, buried sand and gravel aquifers can have widely variable water production and quality characteristics. Depositional variability can be associated with the historic river's previous course or other depositional characteristics associated with glacial outwash.

Prior publications mention buried sand and gravel aquifers but efforts to map boundaries, determine water quality characteristics, or the like have not been completed in Iowa. Iowa's Groundwater Basics, (Prior, et al., 2003) discusses two types of buried sand and gravel aquifers: buried valley aquifers and glacial drift aquifers. A figure within the publication shows a statewide map of potential buried valley aquifers that is a good reference on a statewide scale. The figure loses application potential on a local scale such as the Jefferson study area. Ground-Water Data for Alluvial Buried Channel, Basal Pleistocene and Dakota Aquifer in West-Central Iowa (Hunt and Runkle, 1985) summarized a comprehensive study on water quality, production, and lithology for an eight county area that includes Greene County. The study contained several well logs but did not map buried sand and gravel aquifer boundaries.

GEOLOGIC SITE ASSESSMENT

A study radius of four miles around city wells 7 and 8 was chosen to focus the investigation. Geologic information was gathered from the IGWS GEOSAM database, the DNR Private Well Tracking System database, and from several well logs provided by Greene County. Appendix A lists well information gathered from GEOSAM for use in this assessment. Locations of utilized well points were updated based on well records and county assessor parcel data, and LiDAR elevations were derived. Data from the geophysical investigation were factored into the geologic site assessment.

Well records were analyzed to determine the extent of the buried sand and gravel aquifer within the four mile study area. Figure 3 shows the distribution of data points utilized in the study along with sand and gravel thickness and bedrock surface interpretations. All data in Figure 3 contain at least a lithologic formation log from the drilling process; several contain rock chip samples and a detailed lithologic

and stratigraphic log. A buried sand and gravel isopach map was generated based on all available data and is shown in Figure 4. The isopach map shows where major aquifer boundaries may be located and how aquifer thickness appears to vary within the Jefferson area. It appears the thickest sand and gravel in the aquifer may trend in a north-south direction though Jefferson and may trend east to the north of town. Thinner sands and gravels may be connected immediately west and northwest of town but were either not thick enough or there were insufficient data to incorporate these into the aquifer isopach. This figure does not show where absolute boundaries are but provides an interpretation based on geologic data at the time of this publication. For example, Figure 3 shows an area immediately east of town that contained very few data points. Additional geologic data obtained in areas lacking sufficient data will help update and refine aquifer extent and thickness interpretations.

GEOPHYSICAL INVESTIGATION

Field Data Collection

A geophysical investigation was conducted to gather additional information related to aquifer characteristics near city wells 7 and 8. An Advanced Geosciences Inc. SuperSting R8, 8-channel ER meter was used to collect all geophysical measurements. Field measurements were obtained by introducing a direct current into the ground through current electrodes and measuring resulting voltages through multiple potential electrodes. An array of 56 stainless steel electrode stakes were spaced approximately 20 ft. apart, driven approximately one ft. into the ground, and connected via electrode cables and a switch box to a central ER meter.

Two surveys were completed April 16, 2013 (Figure 5). One transect was completed in an east-west orientation and one in a north-

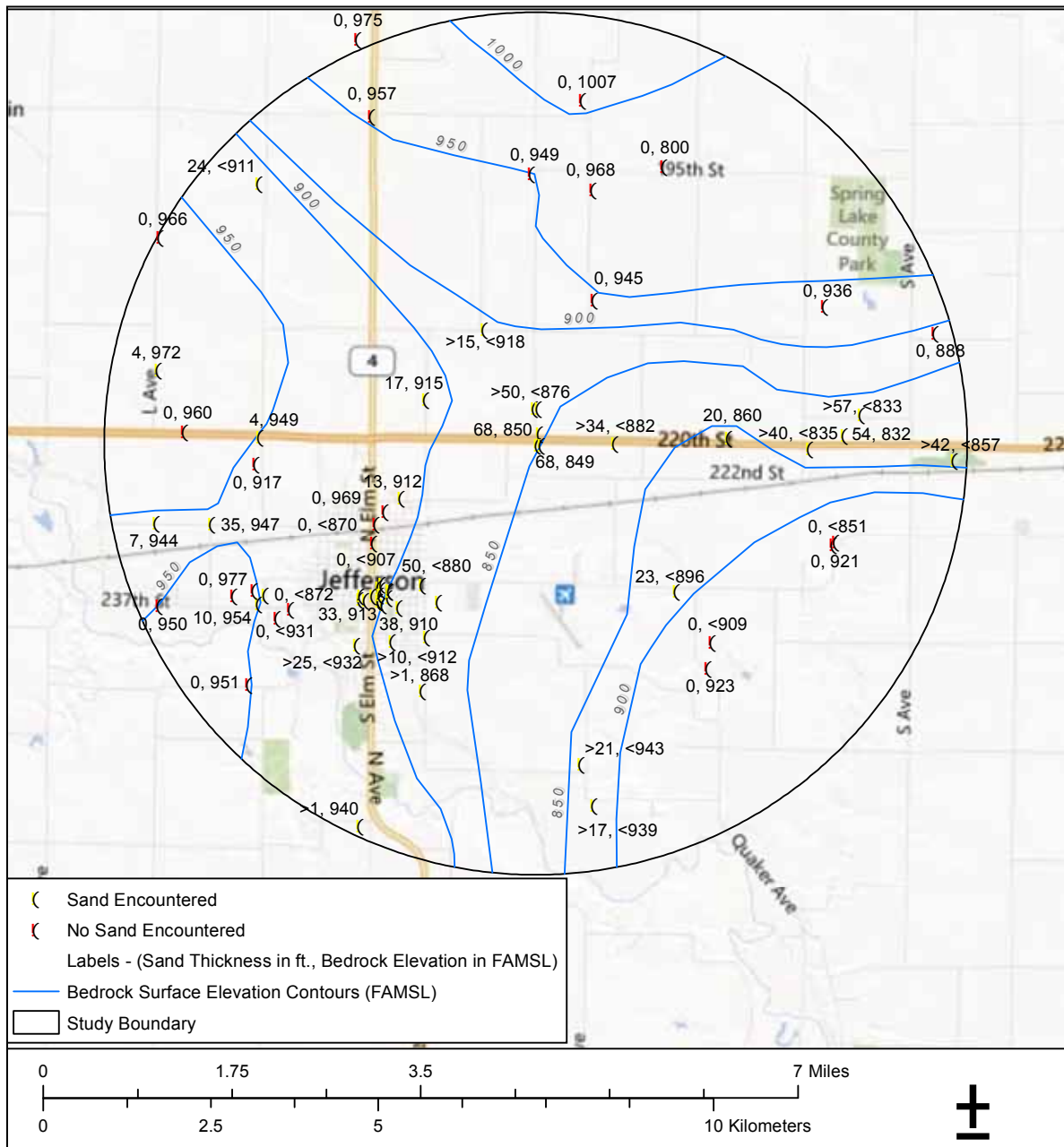


Figure 3. Location of geologic data points used. Labels indicate sand and gravel thickness in feet and bedrock surface elevation in feet above mean sea level.

south orientation; a total of 7,603 individual resistivity measurements were collected. Transect locations were chosen based on their proximity to wells 7 and 8 so that geophysical interpretations could be made in conjunction with exist-

ing geologic data. Transects were oriented in a perpendicular arrangement to determine how geologic materials vary in either direction.

Field data were obtained using dipole-dipole configurations; chosen to maximize data

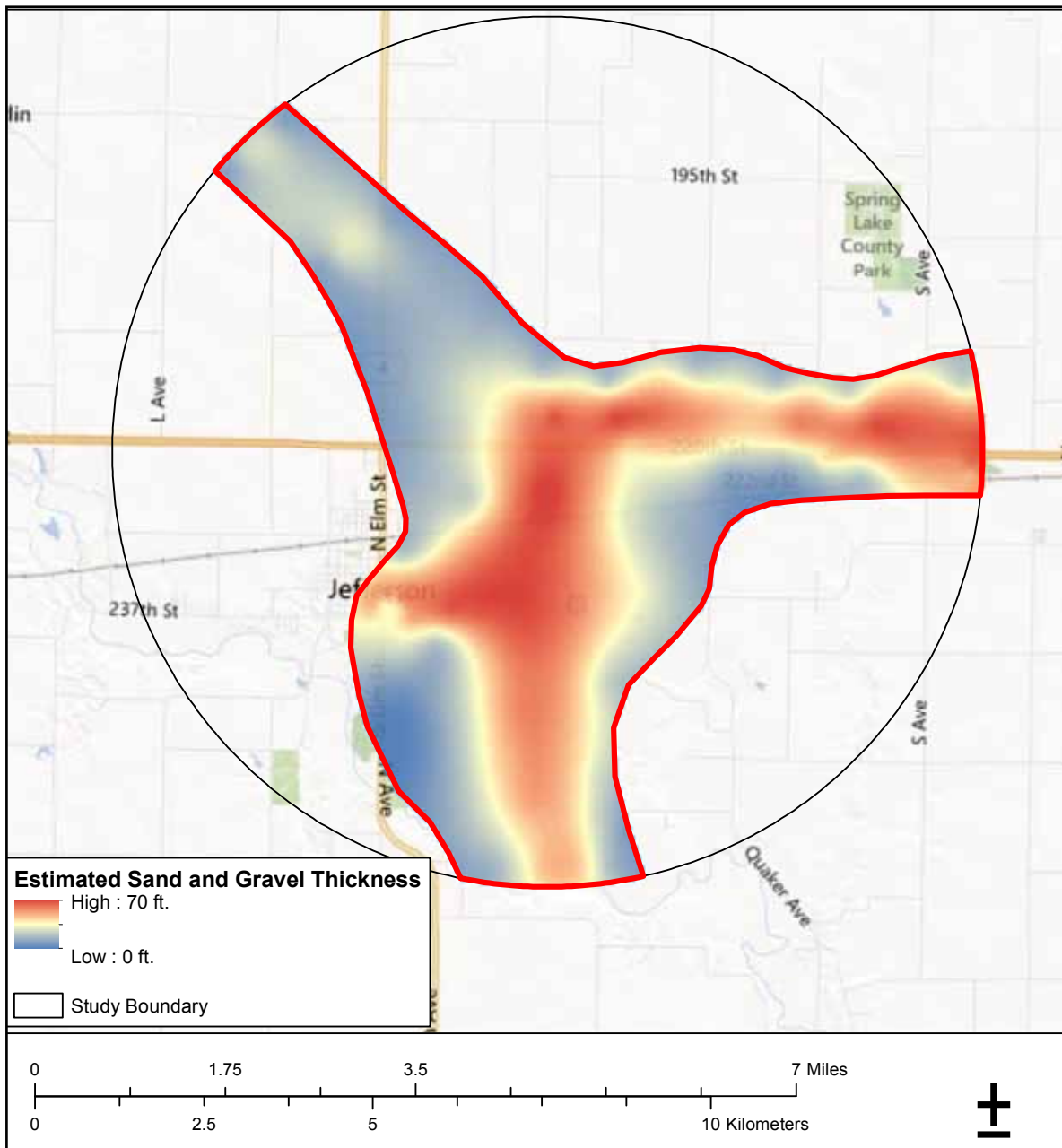


Figure 4. Interpreted aquifer boundary and sand and gravel thickness map.

collection by utilizing all channels to acquire data. Measure time was set at 3.6 seconds and measurements were stacked (averaged) twice, unless the standard deviation of all channels was less than 2 percent. In that case, a third or fourth measurement was taken and included

in the average. To quantify error, overlapping data were collected in areas already covered by normal measurement. Reciprocal data were collected to further quantify error. Data were collected in “roll-along” fashion, resulting in a single data set along an entire transect.



Figure 5. Map showing ER transect locations.

Data Inversion

Data were processed using AGI EarthImager 2D version 2.4.0 software. A smooth model inversion method was used. The inversion mesh was fine for the near-surface region in each transect and coarsened with depth. Resistivity values below 1 Ohm-m or above 10,000 Ohm-m were removed as these values are typically representative of erroneous data. Inversion was stopped after four iterations as root mean square (rms) values were below 5 percent, and L2 norm ratio values were close to 1.

Models provide an interpretation of how the subsurface responds to electrical influence. Model results can be indicative of a number of variables including, but not limited to, mineralogy, water saturation, compaction and available pore space, dissolved ions in pore fluid, as well as other geologic, biologic, and chemical factors. Interpretation of these data must be in the context of additional site information.

Data Synthesis

Electrical resistivity tomography uses direct current as a means of modeling the subsurface. Generally, coarse grained material is more resistive to electrical charge than fine grained material. Drilling log records and rock chip samples from city wells 7 and 8 were analyzed and used in the interpretation of the geophysical data.

Figure 5 shows the two geophysical transect locations near wells 7 and 8. The final geophysical models for the east-west transect and north-south transect are shown in figures 6 and 7, respectively. Models were corrected for land surface elevation using LiDAR elevation data. Approximate locations for wells 7 and 8 are indicated on the East-West Model with solid lines marking the known contacts of geologic units associated with the buried sand and gravel aquifer. The known contacts correlate well to the geophysical model results. Variability in the

upper aquifer surface is evident in the profiles. Dashed lines show interpreted contacts between key lithologic units.

The geophysical models suggest that a consistently thick sequence of glacial till (>100 ft. thick) is protecting the aquifer in the study area. Aquifers overlain by thicker confining layers are less susceptible to surface-sourced contamination than aquifers overlain by thin confining layers. Areas of higher resistivity may suggest a higher concentration of coarse grained gravels. The variability of resistivity values in the two models is indicative of modern river systems or glacial outwash as sediment deposition is largely dependent on the river's course through time. Geophysical data collected at the north-south model suggests that coarse-grained alluvium is present just below the land surface, likely representing deposits associated with nearby Hardin Creek. A thick unit of glacial till separates this alluvium from the buried sand and gravel, making hydraulic connection between the two unlikely. Model resolution and data quality diminish exponentially with depth so it is difficult to determine where the buried sand and gravel aquifer may be in contact with the bedrock surface. The Pennsylvanian bedrock contact was interpreted based on the occurrence of shale in Jefferson Well 7, at 175 ft. below the ground surface, which is consistent with geologic logs from nearby wells.

HYDROGEOLOGIC ANALYSES AND GROUNDWATER MODELING

Hydrogeologic data were obtained from two separate aquifer pump tests using city wells 7 and 8 and three nearby observation wells. A pressure transducer was placed in each of the three observation wells, and water level data was collected every 15 minutes over the course of approximately 13 days.

Based on aquifer pump test results, the transmissivity of the buried sand and gravel

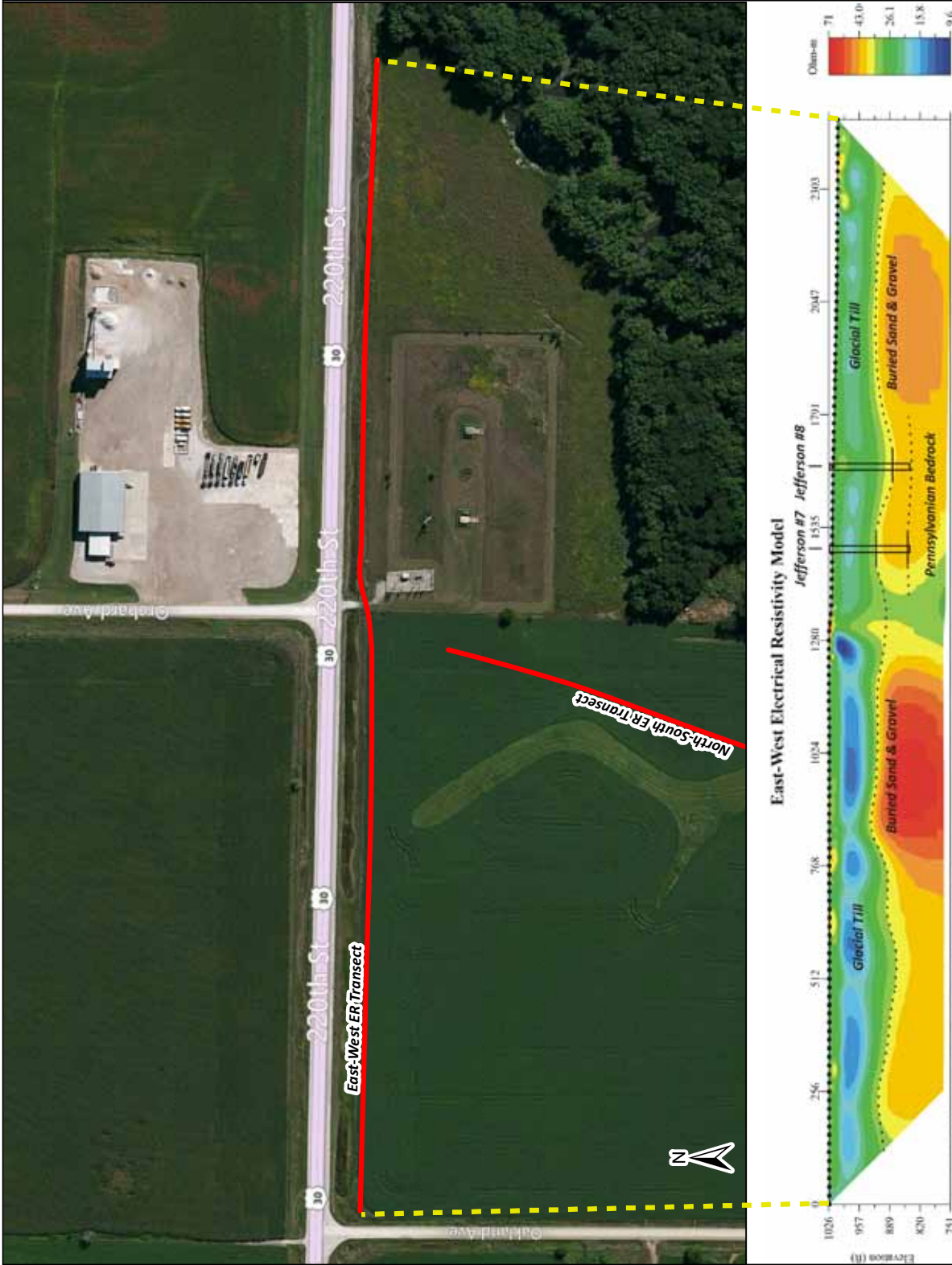


Figure 6. ER model results for the east-west transect. Dashed lines indicate interpreted geologic contacts. Jefferson wells 7 and 8 are drawn to show their approximate location. Known geologic contacts from well records are shown by a solid line.

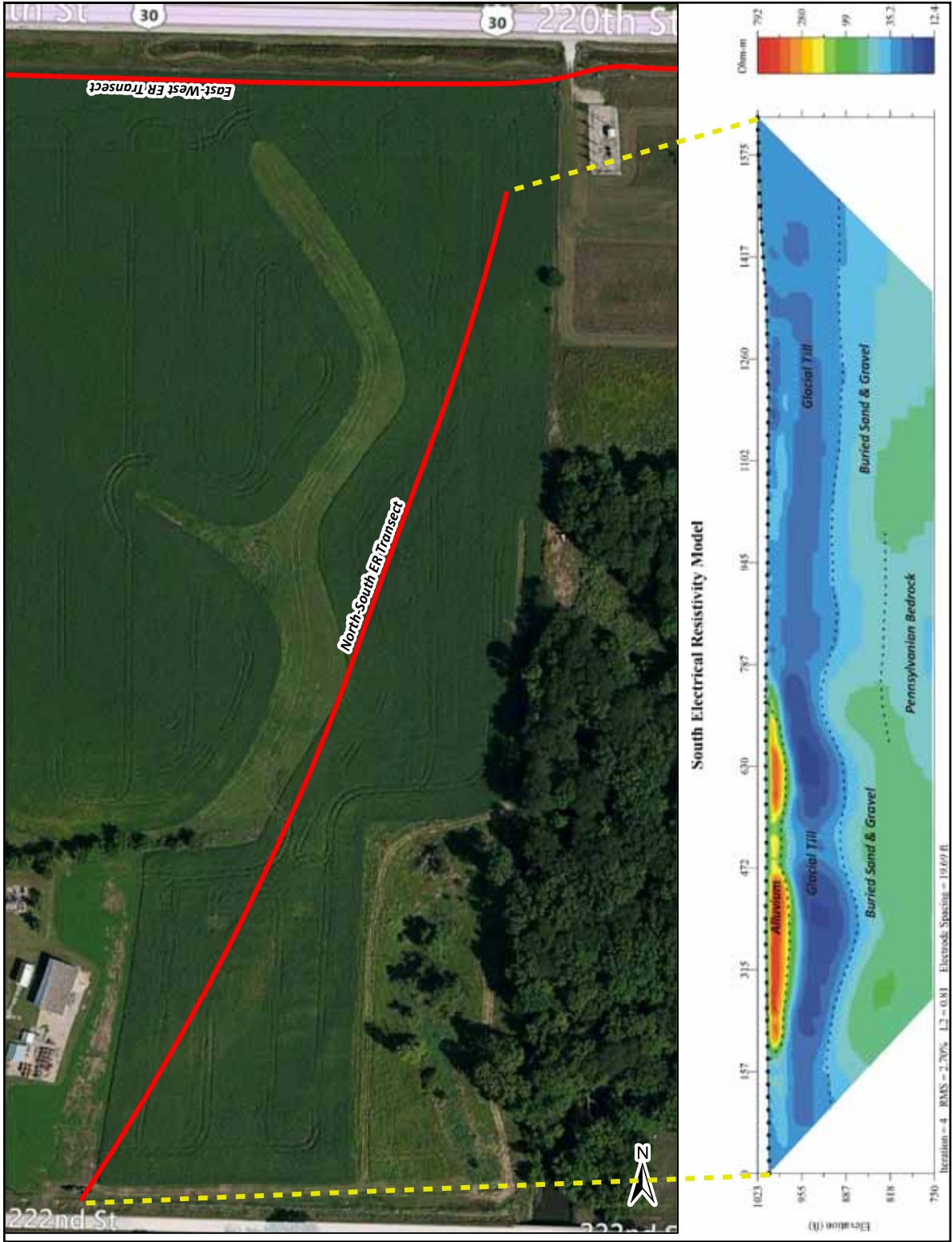


Figure 7. ER model results for the north-south transect. Dashed lines indicate interpreted geologic contacts. Note highly resistive alluvium in upper left of model.

aquifer was found to range from 9,130 ft.²/day near observation well 2 (Well 8) to 14,700 ft.²/day near observation well 3 (Well 8). The arithmetic mean transmissivity value is 12,000 ft.²/day. Results and data from the two separate pump tests are shown in Appendix B.

Hydraulic conductivity can be calculated by dividing the transmissivity by the overall aquifer thickness. Hydraulic conductivity was found to range from 183 to 293 ft./day, with an arithmetic mean of 240 ft./day.

The model Visual MODFLOW version 2011.1 was used to simulate the groundwater flow in the buried sand and gravel aquifer in the proposed study area. A three-layered model was used for the simulation. The borehole logs were obtained from the GEOSAM database, and the elevation data was obtained from LiDAR (two-foot contour interval).

The model boundary conditions and inputs include the following:

- Layer 1 is assumed to be primarily silty clay. The horizontal hydraulic conductivity was assigned a value of 0.03 ft./day. The vertical hydraulic conductivity value was assigned a value 1/10 of the horizontal hydraulic conductivity.
- Layer 2 is the buried sand and gravel aquifer. The horizontal hydraulic conductivity values were assigned based on the pump test results. These were modified slightly in the transient model to fit the model results to observed values. The vertical hydraulic conductivity values were assigned values 1/10 of the horizontal hydraulic conductivity values.
- Layer 3 is assumed to be primarily shale. The horizontal hydraulic conductivity was assigned a value of 0.03 ft./day. The vertical hydraulic conductivity value was assigned a value 1/10 of the horizontal hydraulic conductivity.
- The lateral limits of the sand and gravel were considered no-flow boundaries. This was represented by deactivating the grids

outside the buried sand and gravel aquifer boundary.

- General head boundaries were used to represent flow through conditions within the buried sand and gravel.
- The pumping stress caused city wells 4, 6, 7, 8, 9, and 10 were simulated in the transient model. Annual usage was obtained from the City of Jefferson for year 2012.
- Storativity values ranged from 0.00019 to 0.00035, and were based on the pump test results.
- The total number of rows and columns were 300 by 300.

The model was initially run to simulate non-pumping conditions. The non-pumping or steady-state model was calibrated using static water levels measured in the three observation wells and the six city production wells.

The pumping or transient model calibration was performed using pump test results from City of Jefferson wells 7 and 8. Hydraulic conductivity and storativity values were adjusted until the simulated water levels matched the observed values from the three observation wells.

A source water assessment, completed in 2012 for the City of Jefferson, contained fixed radius circle capture zones due to a lack of aquifer information. Through the use of information obtained from this investigation and the particle tracking module in Visual MODFLOW, groundwater movement or travel time was simulated for the public wells. The particle tracking results can be used to evaluate the source water capture zones. Revised 2-, 5-, and 10-yr. capture zones were evaluated for the in-town well field (wells 4, 6, 9, and 10) and the out-of-town well field (wells 7 and 8), and shown in Figure 8. The original capture zones are also shown in Figure 8 to provide context to the revisions. The revised capture zones significantly focus the footprint to reflect new gradient, boundary, and other aquifer information. SWP can use these capture zones to prioritize

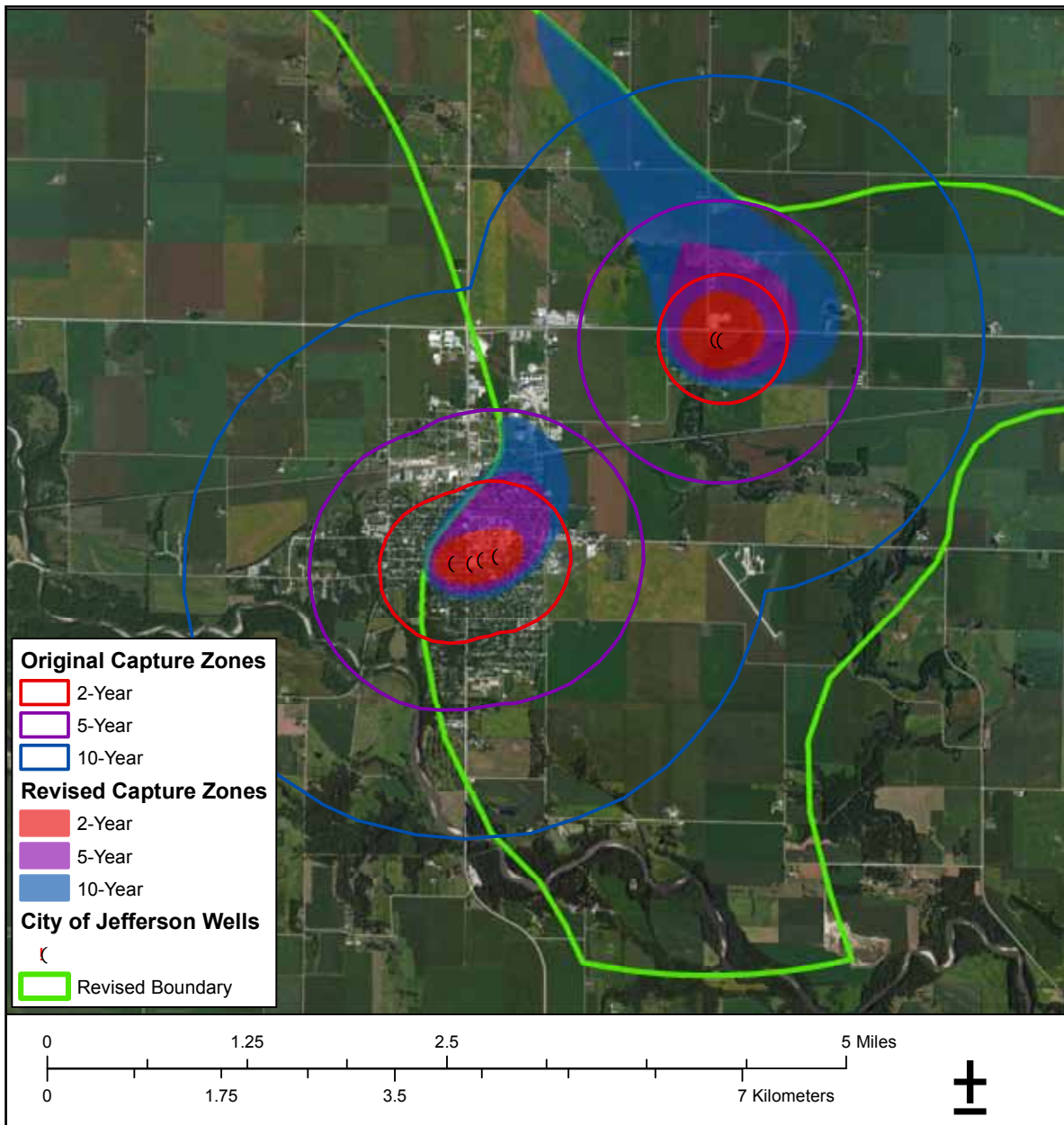


Figure 8. Original and revised 2-, 5-, and 10-yr. capture zones for the City of Jefferson active wells. The revised capture zones contain a significantly smaller and targeted footprint when compared to the original.

potential point and non-point sources of contamination and implement best management practices. These best management practices have the potential to improve and protect an aquifer's long-term water quality. The entire source water capture zone was considered to

have low susceptibility to contamination from the surface based on an interpretation of more than 100 ft. of a cumulative confining layer such as till, clay, and shale between the source water aquifer and land surface. While the thick confining layer near Jefferson limits the pos-

sibility of surface contamination, it also limits recharge to the aquifer. While the potential for surface water and contamination to enter the aquifer through the confining layer is low, the potential exists for surface contamination to reach the aquifer through improperly constructed or abandoned wells.

CONCLUSIONS

The Iowa DNR initiated a geologic, geophysical, and hydrogeologic investigation to gather and summarize aquifer characteristics for the buried sand and gravel aquifer near Jefferson. The City of Jefferson expressed interest in completing a SWP plan which required the investigation to refine capture zones and gather additional aquifer information. The investigation was focused near Jefferson wells 7 and 8 to provide more aquifer information in that area.

The buried sand and gravel aquifer is most likely Wisconsinan in age associated with the advance of the Des Moines Lobe ice sheet. Geophysical surveys were completed to gather information on the variability and characteristics of the aquifer in the surveyed area. Geophysical models suggest a continuous, thick confining layer of glacial till overlies the buried sand and gravel aquifer in the surveyed area. Water, potential contaminants, and elements move very slowly through glacial till, offering good protection from surface contaminants. Areas of higher resistivity may suggest a higher concentration of coarse grained sands and gravels. The variability of resistivity values in the two models is indicative of modern river systems or glacial outwash as sediment deposition is largely dependent on the river's course through time.

A geologic site assessment was completed, including data from wells within four miles of Jefferson wells 7 and 8. Well data were used to create a geologic interpretation of the aquifer boundaries and thicknesses of the sand and

gravel. It appears the thickest sand and gravel in the aquifer may trend in a north-south direction though Jefferson before trending east-north of town.

A hydrogeologic assessment was completed for the aquifer. Pressure transducers were installed and pumping data were collected from city-owned and other nearby wells. Results from these tests show hydraulic connection between three different observation wells and city production wells. Aquifer parameters were gathered and used to create refined 2-, 5-, and 10-yr. source water capture zones. Capture zones are intended to assist in the identification of point and non-point aquifer contamination sources.

FURTHER STUDIES AND LESSONS LEARNED

Geologic knowledge was gained from varying sources in this groundwater investigation. Lessons learned from this study can assist further investigations in this or other buried sand and gravel aquifer settings. Reviewing the relevance and limitations of each source will assist future buried sand and gravel aquifer investigations.

The quality, quantity, and geographic distribution of driller's logs are directly related to the success of accurately delineating buried sand and gravel aquifer dimensions. Striplogs produced by geologists may not serve as vital a role in delineating buried sand and gravel aquifers as they do in bedrock aquifers. Bedrock aquifer studies rely on striplogs for stratigraphic information while buried sand and gravel aquifer studies can benefit from either driller's logs or striplogs.

ER tomography proved valuable in finding contacts between the aquifer and confining units of contrasting resistivity. It was less successful in differentiating between the aquifer and underlying bedrock at depth. In future studies, ER might be best suited to locating lateral boundaries of buried sand and

gravel aquifers. Future studies incorporating geophysical surveying techniques should also incorporate forward modeling. Forward modeling is a method used in ER surveys to create an initial model based on interpretations. Forward modeling before field data collection can provide insight into whether the equipment and inversion software is able to define aquifer boundaries as needed.

As a direct result of this investigation, Jefferson's source water capture zones decreased by approximately 90 percent. A significant reduction in capture zones allows municipalities a better opportunity to implement SWP practices. While it may be unusual for other investigations to decrease capture zones as significantly as Jefferson, future studies may benefit from a similar reduction.

REFERENCES

- Advanced Geosciences, Inc. Instruction Manual for EarthImager 2D: Version 2.4.0, Resistivity and IP Inversion Software, 2009.
- Advanced Geosciences, Inc. Instruction Manual for The SuperSting with swift automatic resistivity and IP system: SuperSting R1/IP Release 01.01.38, SuperSting R8/IP Release 01.03.41, January 2006.
- Burger, H. Robert, Sheehan, Anne F. and Jones, Craig H. Introduction to Applied Geophysics: Exploring the Shallow Subsurface. 2nd ed. New York: W. W. Norton & Company, 2006.
- Hunt, P. K., and Runkle, D. L., 1985, Ground-Water Data for the Alluvial, Buried Channel, Basal Pleistocene and Dakota Aquifer in West-Central Iowa, United States Geological Survey, Open File Report 84-819, 168 p.
- Iowa Department of Natural Resources, 2012, Iowa Source Water Protection Guidebook, Iowa Department of Natural Resources Iowa Geological and Water Survey, 30 p.
- Iowa Department of Natural Resources, 2013, Source Water Assessment for Jefferson (PWS#3742004): Iowa Department of Natural Resources, Iowa Department of Natural Resources Iowa Geological and Water Survey, 10 p.
- Pope, John P., 2012, Description of Pennsylvanian Units, Revision of Stratigraphic Nomenclature, and Reclassification of the Morrowan, Atokan, Desmoinesian, Missourian, and Virgilian stages in Iowa, Iowa Department of Natural Resources Iowa Geological and Water Survey, 140 p.
- Prior, J.C., Boekhoff, J.L., Howes, M.R., Libra, R.D., and VanDorpe, P.E., 2003, Iowa's Groundwater Basics, Iowa Department of Natural Resources Iowa Geological and Water Survey, 83 p.
- Quade, D.J., and Seigley, L.S., 2006, Quaternary Geology of the Storm Lake Area, Iowa: Storm Lake Outlet, Des Moines Lobe Moraines, Kames, Valley Trains, Minor Moraines, and Tazewell Till Plain, Geological Society of Iowa Guidebook 78, 68 p.
- Schilling, K. E., 2002, Occurrence and Distribution of Ammonium in Iowa Groundwater, Water Environment Research, Volume 74, Number 2, p. 177-186.
- Witzke, B.J., Anderson, R.R. and Pope, J.P., 2010, Bedrock Geologic Map of Iowa, Iowa Department of Natural Resources Iowa Geological and Water Survey, Map 22.


APPENDIX A
WELLS USED


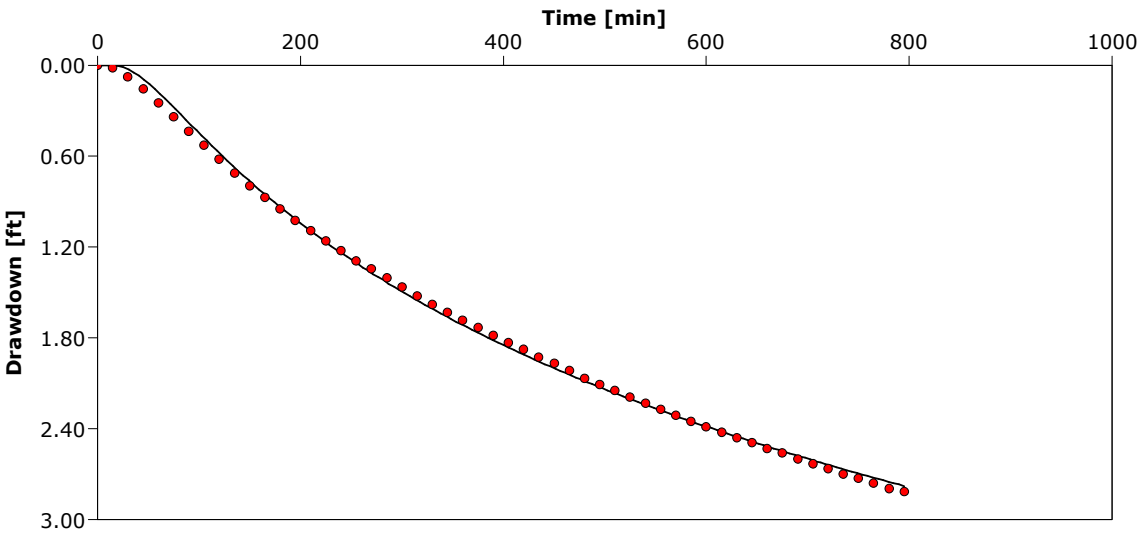
W-Number	Name of Owner	Total Depth	Website Link (additional site information available online)
1034	Mcdonald	142	http://www.igsb.uiowa.edu/webapps/geosam/Scripts/geocard.asp?wnumber=1034
4866	Jefferson, City Of	355	http://www.igsb.uiowa.edu/webapps/geosam/Scripts/geocard.asp?wnumber=4866
4867	Jefferson, City Of	155	http://www.igsb.uiowa.edu/webapps/geosam/Scripts/geocard.asp?wnumber=4867
4914	Jefferson, City Of	2,307	http://www.igsb.uiowa.edu/webapps/geosam/Scripts/geocard.asp?wnumber=4914
5389	Jefferson, City Of	125	http://www.igsb.uiowa.edu/webapps/geosam/Scripts/geocard.asp?wnumber=5389
6085	Jefferson, City Of	190	http://www.igsb.uiowa.edu/webapps/geosam/Scripts/geocard.asp?wnumber=6085
6086	Jefferson, City Of	150	http://www.igsb.uiowa.edu/webapps/geosam/Scripts/geocard.asp?wnumber=6086
6087	Jefferson, City Of	160	http://www.igsb.uiowa.edu/webapps/geosam/Scripts/geocard.asp?wnumber=6087
6088	Jefferson, City Of	160	http://www.igsb.uiowa.edu/webapps/geosam/Scripts/geocard.asp?wnumber=6088
6089	Jefferson, City Of	170	http://www.igsb.uiowa.edu/webapps/geosam/Scripts/geocard.asp?wnumber=6089
6090	Jefferson, City Of	160	http://www.igsb.uiowa.edu/webapps/geosam/Scripts/geocard.asp?wnumber=6090
6091	Jefferson, City Of	170	http://www.igsb.uiowa.edu/webapps/geosam/Scripts/geocard.asp?wnumber=6091
6161	Jefferson, City Of	160	http://www.igsb.uiowa.edu/webapps/geosam/Scripts/geocard.asp?wnumber=6161
6162	Jefferson, City Of	150	http://www.igsb.uiowa.edu/webapps/geosam/Scripts/geocard.asp?wnumber=6162
9810	Jefferson, City Of	143	http://www.igsb.uiowa.edu/webapps/geosam/Scripts/geocard.asp?wnumber=9810
9981	Jefferson, City Of	145	http://www.igsb.uiowa.edu/webapps/geosam/Scripts/geocard.asp?wnumber=9981
14109	Moore, John	110	http://www.igsb.uiowa.edu/webapps/geosam/Scripts/geocard.asp?wnumber=14109
17271	Minnehall, L.B.	578	http://www.igsb.uiowa.edu/webapps/geosam/Scripts/geocard.asp?wnumber=17271
17685	Ritter, Damen	215	http://www.igsb.uiowa.edu/webapps/geosam/Scripts/geocard.asp?wnumber=17685
18442	Schuttler, H.A.	140	http://www.igsb.uiowa.edu/webapps/geosam/Scripts/geocard.asp?wnumber=18442
19731	Gunn, Orvic	185	http://www.igsb.uiowa.edu/webapps/geosam/Scripts/geocard.asp?wnumber=19731
19994	Fountain, Darrell	130	http://www.igsb.uiowa.edu/webapps/geosam/Scripts/geocard.asp?wnumber=19994
20421	Peterson, Clara	119	http://www.igsb.uiowa.edu/webapps/geosam/Scripts/geocard.asp?wnumber=20421
24919	Jefferson, City Of	85	http://www.igsb.uiowa.edu/webapps/geosam/Scripts/geocard.asp?wnumber=24919
24921	Jefferson, City Of	90	http://www.igsb.uiowa.edu/webapps/geosam/Scripts/geocard.asp?wnumber=24921
24922	Jefferson, City Of	170	http://www.igsb.uiowa.edu/webapps/geosam/Scripts/geocard.asp?wnumber=24922
24923	Jefferson, City Of	180	http://www.igsb.uiowa.edu/webapps/geosam/Scripts/geocard.asp?wnumber=24923
25602	Jefferson, City Of	155	http://www.igsb.uiowa.edu/webapps/geosam/Scripts/geocard.asp?wnumber=25602
26469	Jefferson, City Of	178	http://www.igsb.uiowa.edu/webapps/geosam/Scripts/geocard.asp?wnumber=26469
27056	Unknown	201	http://www.igsb.uiowa.edu/webapps/geosam/Scripts/geocard.asp?wnumber=27056
33417	Hall, Donald	109	http://www.igsb.uiowa.edu/webapps/geosam/Scripts/geocard.asp?wnumber=33417
34256	Hamilton, John	176	http://www.igsb.uiowa.edu/webapps/geosam/Scripts/geocard.asp?wnumber=34256
38300	Heun, Tom	115	http://www.igsb.uiowa.edu/webapps/geosam/Scripts/geocard.asp?wnumber=38300
38509	Youngblood, Meryl	130	http://www.igsb.uiowa.edu/webapps/geosam/Scripts/geocard.asp?wnumber=38509
39440	Beltz, Ervin & Mary	326	http://www.igsb.uiowa.edu/webapps/geosam/Scripts/geocard.asp?wnumber=39440
40473	Jefferson, City Of	163	http://www.igsb.uiowa.edu/webapps/geosam/Scripts/geocard.asp?wnumber=40473
40474	Jefferson, City Of	160	http://www.igsb.uiowa.edu/webapps/geosam/Scripts/geocard.asp?wnumber=40474
40476	Unknown	159	http://www.igsb.uiowa.edu/webapps/geosam/Scripts/geocard.asp?wnumber=40476
42013	Jefferson, City Of	155	http://www.igsb.uiowa.edu/webapps/geosam/Scripts/geocard.asp?wnumber=42013
42014	Jefferson, City Of	177	http://www.igsb.uiowa.edu/webapps/geosam/Scripts/geocard.asp?wnumber=42014
42381	Fowler, Willis	98	http://www.igsb.uiowa.edu/webapps/geosam/Scripts/geocard.asp?wnumber=42381
43465	Mace, Wayne	128	http://www.igsb.uiowa.edu/webapps/geosam/Scripts/geocard.asp?wnumber=43465
43740	Tasler, Kevin	207	http://www.igsb.uiowa.edu/webapps/geosam/Scripts/geocard.asp?wnumber=43740
44384	Fouch, Doug	165	http://www.igsb.uiowa.edu/webapps/geosam/Scripts/geocard.asp?wnumber=44384
46023	Gibson, Ray	160	http://www.igsb.uiowa.edu/webapps/geosam/Scripts/geocard.asp?wnumber=46023
49027	Finch	470	http://www.igsb.uiowa.edu/webapps/geosam/Scripts/geocard.asp?wnumber=49027
49053	Gose, Edmund	452	http://www.igsb.uiowa.edu/webapps/geosam/Scripts/geocard.asp?wnumber=49053
49142	Hensley & Hudson	431	http://www.igsb.uiowa.edu/webapps/geosam/Scripts/geocard.asp?wnumber=49142
49143	Sorenson, Bill	453	http://www.igsb.uiowa.edu/webapps/geosam/Scripts/geocard.asp?wnumber=49143
49165	Reuter, Cecil	440	http://www.igsb.uiowa.edu/webapps/geosam/Scripts/geocard.asp?wnumber=49165
49169	Shriver, Meredith	460	http://www.igsb.uiowa.edu/webapps/geosam/Scripts/geocard.asp?wnumber=49169
49199	Bryan, Carroll	440	http://www.igsb.uiowa.edu/webapps/geosam/Scripts/geocard.asp?wnumber=49199
50137	Minnihan, Kent	320	http://www.igsb.uiowa.edu/webapps/geosam/Scripts/geocard.asp?wnumber=50137
50913	Barrett, Dick	280	http://www.igsb.uiowa.edu/webapps/geosam/Scripts/geocard.asp?wnumber=50913
55462	Adamson, Jay	223	http://www.igsb.uiowa.edu/webapps/geosam/Scripts/geocard.asp?wnumber=55462
62251	Blackmer, Diane	178	http://www.igsb.uiowa.edu/webapps/geosam/Scripts/geocard.asp?wnumber=62251
64290	Smith, Marie	178	http://www.igsb.uiowa.edu/webapps/geosam/Scripts/geocard.asp?wnumber=64290
64448	Martino, Nicola	120	http://www.igsb.uiowa.edu/webapps/geosam/Scripts/geocard.asp?wnumber=64448
65680	Neil, James	180	http://www.igsb.uiowa.edu/webapps/geosam/Scripts/geocard.asp?wnumber=65680
66059	Ostrander, Jerry	321	http://www.igsb.uiowa.edu/webapps/geosam/Scripts/geocard.asp?wnumber=66059
67739	Tri County Lumber	180	http://www.igsb.uiowa.edu/webapps/geosam/Scripts/geocard.asp?wnumber=67739
74008	Midland Power Coop.	30	http://www.igsb.uiowa.edu/webapps/geosam/Scripts/geocard.asp?wnumber=74008
75439	Jefferson, City Of	127	http://www.igsb.uiowa.edu/webapps/geosam/Scripts/geocard.asp?wnumber=75439
75440	Jefferson, City Of	152	http://www.igsb.uiowa.edu/webapps/geosam/Scripts/geocard.asp?wnumber=75440
75441	Jefferson, City Of	150	http://www.igsb.uiowa.edu/webapps/geosam/Scripts/geocard.asp?wnumber=75441


75883 Benson, Mike	112 http://www.igsb.uiowa.edu/webapps/geosam/Scripts/geocard.asp?wnumber=75883
75904 Hilgenger, Bryan	136 http://www.igsb.uiowa.edu/webapps/geosam/Scripts/geocard.asp?wnumber=75904
75905 Warnke, Dallas	200 http://www.igsb.uiowa.edu/webapps/geosam/Scripts/geocard.asp?wnumber=75905
75910 Hoskinson, Keith	183 http://www.igsb.uiowa.edu/webapps/geosam/Scripts/geocard.asp?wnumber=75910
75917 Hamilton, Mark	150 http://www.igsb.uiowa.edu/webapps/geosam/Scripts/geocard.asp?wnumber=75917
75922 Krieger Greenhouse	114 http://www.igsb.uiowa.edu/webapps/geosam/Scripts/geocard.asp?wnumber=75922
75923 Lautner, Phil	121 http://www.igsb.uiowa.edu/webapps/geosam/Scripts/geocard.asp?wnumber=75923
75924 Dunlop, Don	198 http://www.igsb.uiowa.edu/webapps/geosam/Scripts/geocard.asp?wnumber=75924
75931 Stein, Gary	155 http://www.igsb.uiowa.edu/webapps/geosam/Scripts/geocard.asp?wnumber=75931
75937 Olhause, Roger	175 http://www.igsb.uiowa.edu/webapps/geosam/Scripts/geocard.asp?wnumber=75937
75951 Ausberger, Helen	285 http://www.igsb.uiowa.edu/webapps/geosam/Scripts/geocard.asp?wnumber=75951
75961 Rueter, Cecil	200 http://www.igsb.uiowa.edu/webapps/geosam/Scripts/geocard.asp?wnumber=75961
75965 Schilling, Brett	151 http://www.igsb.uiowa.edu/webapps/geosam/Scripts/geocard.asp?wnumber=75965


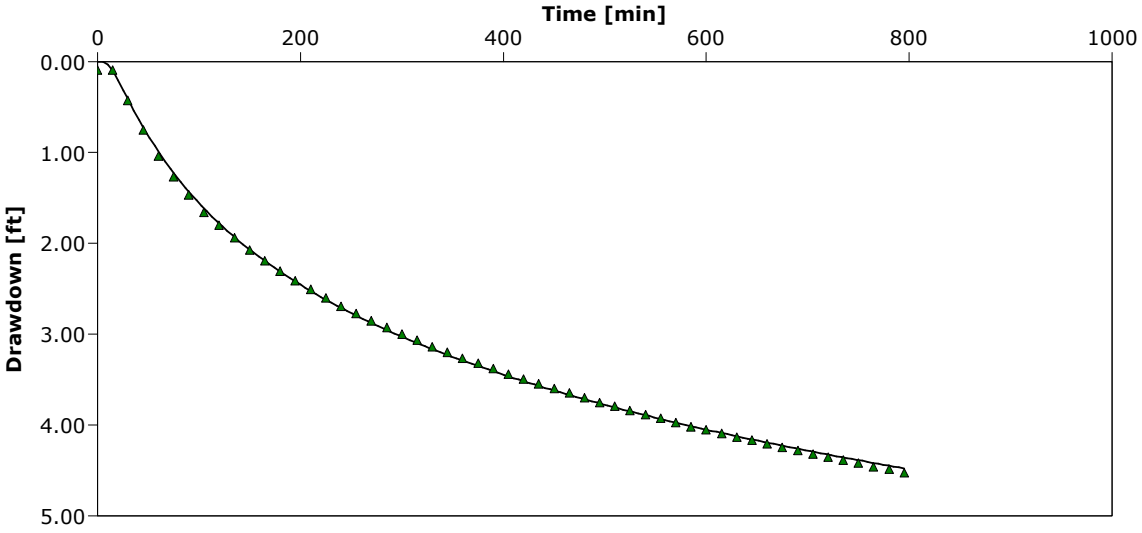
APPENDIX B


PUMP TESTS

	Contact Info		Pumping Test - Water Level Data		Page 1 of 1
	Address		Project: Jefferson Pump Tests		
	Company Name		Number:		
	City, State/Province		Client:		
Location: Jefferson, Iowa		Pumping Test: Pump Test Well 7		Pumping Well: Well 7	
Test Conducted by: IDNR		Test Date: 12/4/2012		Discharge Rate: 1155 [U.S. gal/min]	
Observation Well: ob1		Static Water Level [ft]: 37.22		Radial Distance to PW [ft]: 3782	
	Time [min]	Water Level [ft]	Drawdown [ft]		
1	0	37.22	0.00		
2	15	37.237	0.017		
3	30	37.295	0.075		
4	45	37.375	0.155		
5	60	37.469	0.249		
6	75	37.561	0.341		
7	90	37.656	0.436		
8	105	37.747	0.527		
9	120	37.841	0.621		
10	135	37.93	0.71		
11	150	38.014	0.794		
12	165	38.09	0.87		
13	180	38.168	0.948		
14	195	38.244	1.024		
15	210	38.312	1.092		
16	225	38.381	1.161		
17	240	38.444	1.224		
18	255	38.512	1.292		
19	270	38.565	1.345		
20	285	38.626	1.406		
21	300	38.685	1.465		
22	315	38.743	1.523		
23	330	38.799	1.579		
24	345	38.85	1.63		
25	360	38.903	1.683		
26	375	38.953	1.733		
27	390	39.003	1.783		
28	405	39.051	1.831		
29	420	39.097	1.877		
30	435	39.147	1.927		
31	450	39.19	1.97		
32	465	39.237	2.017		
33	480	39.286	2.066		
34	495	39.326	2.106		
35	510	39.369	2.149		
36	525	39.412	2.192		
37	540	39.453	2.233		
38	555	39.492	2.272		
39	570	39.532	2.312		
40	585	39.57	2.35		
41	600	39.608	2.388		
42	615	39.645	2.425		
43	630	39.681	2.461		
44	645	39.713	2.493		
45	660	39.751	2.531		
46	675	39.782	2.562		
47	690	39.821	2.601		
48	705	39.852	2.632		
49	720	39.883	2.663		
50	735	39.921	2.701		
51	750	39.947	2.727		
52	765	39.98	2.76		
53	780	40.014	2.794		
54	795	40.035	2.815		

	Contact Info		Pumping Test Analysis Report		
	Address		Project: Jefferson Pump Tests		
	Company Name		Number:		
	City, State/Province		Client:		
Location: Jefferson, Iowa		Pumping Test: Pump Test Well 7		Pumping Well: Well 7	
Test Conducted by: IDNR			Test Date: 12/4/2012		
Analysis Performed by:		New analysis 1		Analysis Date: 12/12/2012	
Aquifer Thickness: 50.00 ft		Discharge Rate: 1155 [U.S. gal/min]			
					
Calculation using Theis					
Observation Well	Transmissivity [ft ² /d]	Hydraulic Conductivity [ft/d]	Storage coefficient	Radial Distance to PW [ft]	
ob1	1.12×10^4	2.24×10^2	1.86×10^{-4}	3782.0	

	Contact Info Address Company Name City, State/Province		Pumping Test - Water Level Data Page 1 of 1	
	Project: Jefferson Pump Tests			
	Number:			
	Client:			
Location: Jefferson, Iowa		Pumping Test: Pump Test Well 7		Pumping Well: Well 7
Test Conducted by: IDNR		Test Date: 12/4/2012		Discharge Rate: 1155 [U.S. gal/min]
Observation Well: ob2		Static Water Level [ft]: 33.67		Radial Distance to PW [ft]: 1823
	Time [min]	Water Level [ft]	Drawdown [ft]	
1	0	33.762	0.092	
2	15	33.763	0.093	
3	30	34.098	0.428	
4	45	34.425	0.755	
5	60	34.711	1.041	
6	75	34.937	1.267	
7	90	35.137	1.467	
8	105	35.328	1.658	
9	120	35.47	1.80	
10	135	35.613	1.943	
11	150	35.744	2.074	
12	165	35.864	2.194	
13	180	35.977	2.307	
14	195	36.081	2.411	
15	210	36.18	2.51	
16	225	36.271	2.601	
17	240	36.362	2.692	
18	255	36.445	2.775	
19	270	36.522	2.852	
20	285	36.595	2.925	
21	300	36.673	3.003	
22	315	36.74	3.07	
23	330	36.813	3.143	
24	345	36.871	3.201	
25	360	36.938	3.268	
26	375	36.991	3.321	
27	390	37.052	3.382	
28	405	37.107	3.437	
29	420	37.166	3.496	
30	435	37.22	3.55	
31	450	37.268	3.598	
32	465	37.32	3.65	
33	480	37.368	3.698	
34	495	37.425	3.755	
35	510	37.464	3.794	
36	525	37.512	3.842	
37	540	37.554	3.884	
38	555	37.599	3.929	
39	570	37.642	3.972	
40	585	37.687	4.017	
41	600	37.722	4.052	
42	615	37.762	4.092	
43	630	37.801	4.131	
44	645	37.839	4.169	
45	660	37.876	4.206	
46	675	37.918	4.248	
47	690	37.949	4.279	
48	705	37.988	4.318	
49	720	38.02	4.35	
50	735	38.055	4.385	
51	750	38.088	4.418	
52	765	38.129	4.459	
53	780	38.158	4.488	
54	795	38.195	4.525	

	Contact Info		Pumping Test Analysis Report		
	Address		Project: Jefferson Pump Tests		
	Company Name		Number:		
	City, State/Province		Client:		
Location: Jefferson, Iowa		Pumping Test: Pump Test Well 7		Pumping Well: Well 7	
Test Conducted by: IDNR			Test Date: 12/4/2012		
Analysis Performed by:		New analysis 2		Analysis Date: 12/12/2012	
Aquifer Thickness: 50.00 ft		Discharge Rate: 1155 [U.S. gal/min]			
					
Calculation using Theis					
Observation Well	Transmissivity [ft ² /d]	Hydraulic Conductivity [ft/d]	Storage coefficient	Radial Distance to PW [ft]	
ob2	1.12×10^{-4}	2.25×10^2	2.52×10^{-4}	1823.0	


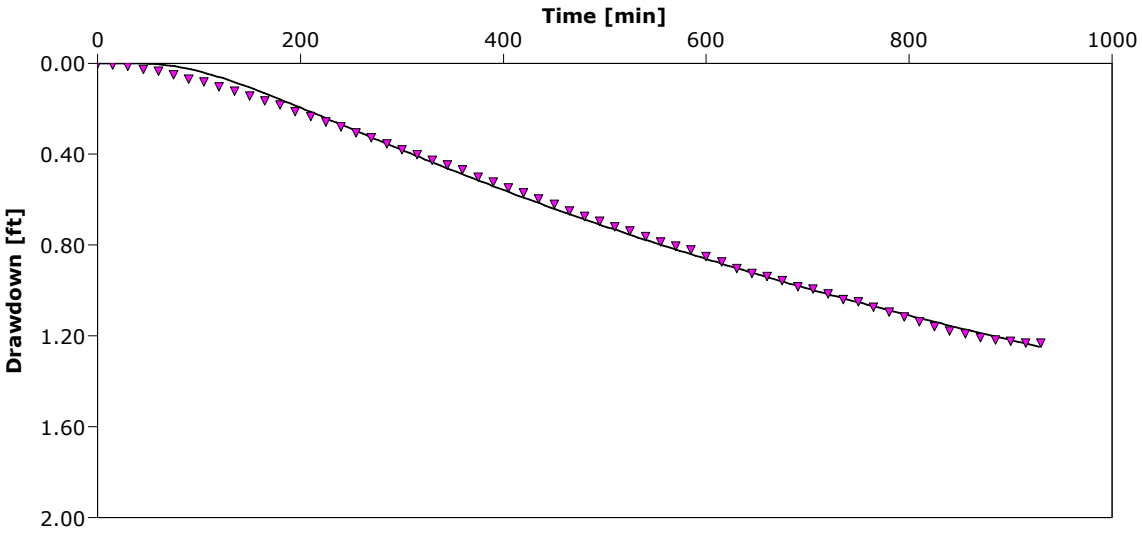
	Contact Info		Pumping Test - Water Level Data		Page 1 of 2
	Address		Project: Jefferson Pump Tests		
	Company Name		Number:		
	City, State/Province		Client:		
Location: Jefferson, Iowa		Pumping Test: Pump Test Well 7		Pumping Well: Well 7	
Test Conducted by: IDNR		Test Date: 12/4/2012		Discharge Rate: 1155 [U.S. gal/min]	
Observation Well: 0b3		Static Water Level [ft]: 35.88		Radial Distance to PW [ft]: 5925	
	Time [min]	Water Level [ft]	Drawdown [ft]		
1	0	35.884	0.004		
2	15	35.888	0.008		
3	30	35.893	0.013		
4	45	35.906	0.026		
5	60	35.914	0.034		
6	75	35.93	0.05		
7	90	35.949	0.069		
8	105	35.962	0.082		
9	120	35.985	0.105		
10	135	36.002	0.122		
11	150	36.025	0.145		
12	165	36.046	0.166		
13	180	36.065	0.185		
14	195	36.094	0.214		
15	210	36.114	0.234		
16	225	36.138	0.258		
17	240	36.161	0.281		
18	255	36.188	0.308		
19	270	36.209	0.329		
20	285	36.235	0.355		
21	300	36.261	0.381		
22	315	36.282	0.402		
23	330	36.306	0.426		
24	345	36.329	0.449		
25	360	36.35	0.47		
26	375	36.381	0.501		
27	390	36.403	0.523		
28	405	36.429	0.549		
29	420	36.452	0.572		
30	435	36.477	0.597		
31	450	36.502	0.622		
32	465	36.531	0.651		
33	480	36.554	0.674		
34	495	36.575	0.695		
35	510	36.60	0.72		
36	525	36.62	0.74		
37	540	36.644	0.764		
38	555	36.667	0.787		
39	570	36.686	0.806		
40	585	36.702	0.822		
41	600	36.73	0.85		
42	615	36.756	0.876		
43	630	36.784	0.904		
44	645	36.805	0.925		
45	660	36.818	0.938		
46	675	36.838	0.958		
47	690	36.865	0.985		
48	705	36.875	0.995		
49	720	36.897	1.017		
50	735	36.92	1.04		
51	750	36.932	1.052		
52	765	36.954	1.074		
53	780	36.976	1.096		
54	795	36.998	1.118		
55	810	37.019	1.139		
56	825	37.04	1.16		
57	840	37.058	1.178		




Contact Info
Address
Company Name
City, State/Province

Pumping Test - Water Level Data Page 2 of 2
Project: Jefferson Pump Tests
Number:
Client:

	Time [min]	Water Level [ft]	Drawdown [ft]
58	855	37.073	1.193
59	870	37.088	1.208
60	885	37.10	1.22
61	900	37.104	1.224
62	915	37.111	1.231
63	930	37.113	1.233

	Contact Info		Pumping Test Analysis Report		
	Address		Project: Jefferson Pump Tests		
	Company Name		Number:		
	City, State/Province		Client:		
Location: Jefferson, Iowa		Pumping Test: Pump Test Well 7		Pumping Well: Well 7	
Test Conducted by: IDNR			Test Date: 12/4/2012		
Analysis Performed by:		New analysis 3		Analysis Date: 12/12/2012	
Aquifer Thickness: 50.00 ft		Discharge Rate: 1155 [U.S. gal/min]			
					
Calculation using Theis					
Observation Well	Transmissivity [ft ² /d]	Hydraulic Conductivity [ft/d]	Storage coefficient	Radial Distance to PW [ft]	
0b3	1.45×10^4	2.89×10^2	2.74×10^{-4}	5925.0	


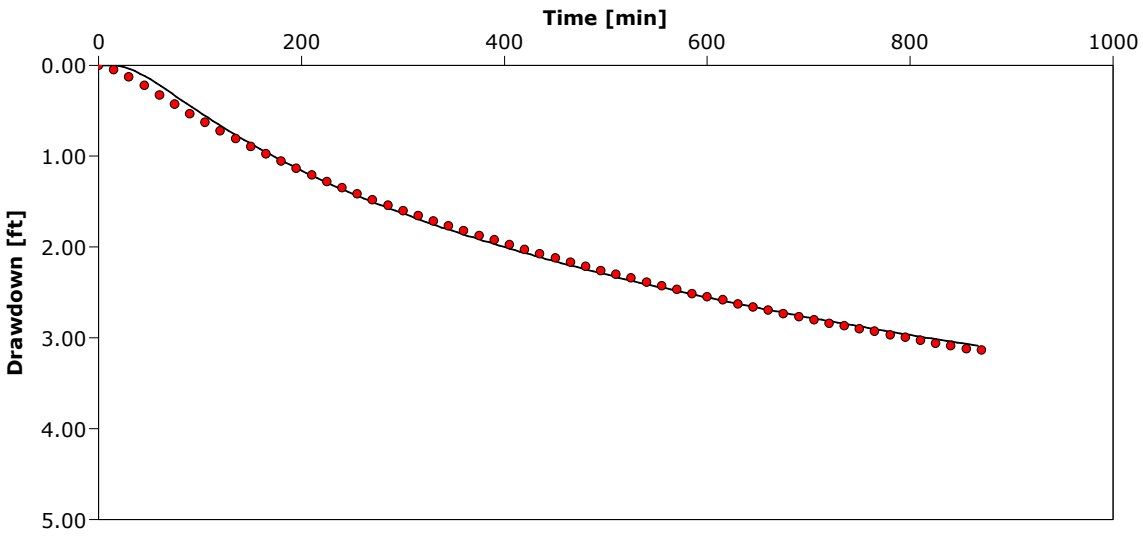
	Contact Info Address Company Name City, State/Province		Pumping Test - Water Level Data Page 1 of 2	
			Project: Jefferson Pump Tests	
			Number:	
			Client:	
Location: Jefferson, Iowa		Pumping Test: Pump Test Well 8		Pumping Well: Well 8
Test Conducted by: IDNR		Test Date: 12/5/2012		Discharge Rate: 1170 [U.S. gal/min]
Observation Well: ob1		Static Water Level [ft]: 37.57		Radial Distance to PW [ft]: 3587
	Time [min]	Water Level [ft]	Drawdown [ft]	
1	0	37.57	0.00	
2	15	37.614	0.044	
3	30	37.694	0.124	
4	45	37.79	0.22	
5	60	37.894	0.324	
6	75	37.998	0.428	
7	90	38.103	0.533	
8	105	38.195	0.625	
9	120	38.29	0.72	
10	135	38.378	0.808	
11	150	38.466	0.896	
12	165	38.546	0.976	
13	180	38.624	1.054	
14	195	38.703	1.133	
15	210	38.775	1.205	
16	225	38.847	1.277	
17	240	38.916	1.346	
18	255	38.981	1.411	
19	270	39.048	1.478	
20	285	39.107	1.537	
21	300	39.167	1.597	
22	315	39.225	1.655	
23	330	39.282	1.712	
24	345	39.339	1.769	
25	360	39.393	1.823	
26	375	39.443	1.873	
27	390	39.492	1.922	
28	405	39.545	1.975	
29	420	39.595	2.025	
30	435	39.643	2.073	
31	450	39.689	2.119	
32	465	39.737	2.167	
33	480	39.781	2.211	
34	495	39.827	2.257	
35	510	39.872	2.302	
36	525	39.913	2.343	
37	540	39.958	2.388	
38	555	39.997	2.427	
39	570	40.038	2.468	
40	585	40.081	2.511	
41	600	40.119	2.549	
42	615	40.152	2.582	
43	630	40.194	2.624	
44	645	40.23	2.66	
45	660	40.266	2.696	
46	675	40.303	2.733	
47	690	40.337	2.767	
48	705	40.373	2.803	
49	720	40.408	2.838	
50	735	40.436	2.866	
51	750	40.473	2.903	
52	765	40.495	2.925	
53	780	40.534	2.964	
54	795	40.566	2.996	
55	810	40.599	3.029	
56	825	40.629	3.059	
57	840	40.657	3.087	




Contact Info
Address
Company Name
City, State/Province

Pumping Test - Water Level Data Page 2 of 2
Project: Jefferson Pump Tests
Number:
Client:

	Time [min]	Water Level [ft]	Drawdown [ft]
58	855	40.693	3.123
59	870	40.704	3.134

	Contact Info		Pumping Test Analysis Report		
	Address		Project: Jefferson Pump Tests		
	Company Name		Number:		
	City, State/Province		Client:		
Location: Jefferson, Iowa		Pumping Test: Pump Test Well 8		Pumping Well: Well 8	
Test Conducted by: IDNR			Test Date: 12/5/2012		
Analysis Performed by:		New analysis 3		Analysis Date: 12/12/2012	
Aquifer Thickness: 50.00 ft		Discharge Rate: 1170 [U.S. gal/min]			
					
Calculation using Theis					
Observation Well	Transmissivity [ft ² /d]	Hydraulic Conductivity [ft/d]	Storage coefficient	Radial Distance to PW [ft]	
ob1	1.12×10^4	2.23×10^2	1.87×10^{-4}	3587.0	


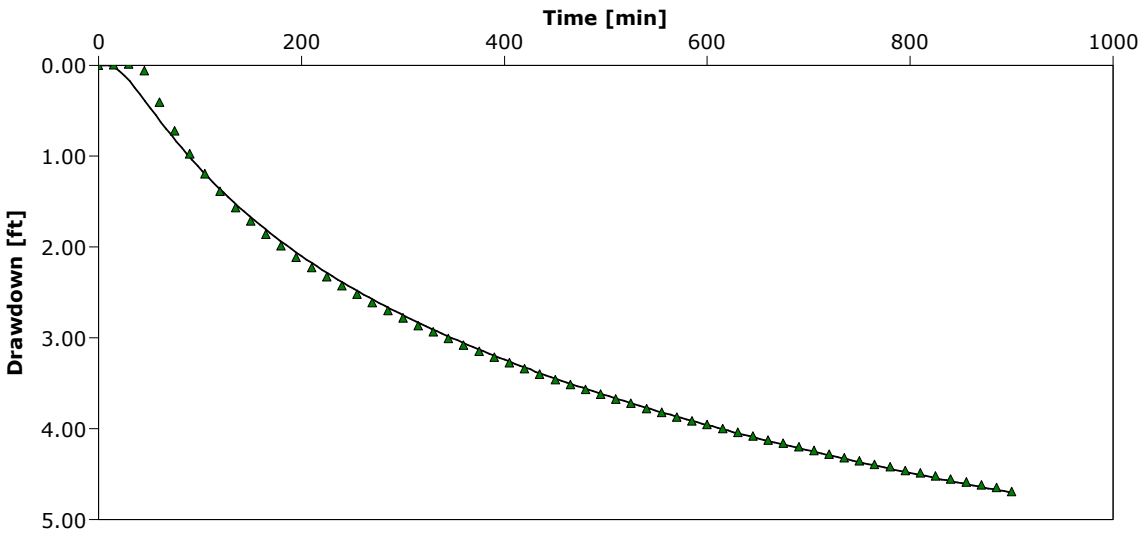
 Contact Info Address Company Name City, State/Province		Pumping Test - Water Level Data		Page 1 of 2	
		Project: Jefferson Pump Tests			
		Number:			
		Client:			
Location: Jefferson, Iowa		Pumping Test: Pump Test Well 8		Pumping Well: Well 8	
Test Conducted by: IDNR		Test Date: 12/5/2012		Discharge Rate: 1170 [U.S. gal/min]	
Observation Well: ob2		Static Water Level [ft]: 34.09		Radial Distance to PW [ft]: 1870	
	Time [min]	Water Level [ft]	Drawdown [ft]		
1	0	34.092	0.002		
2	15	34.082	-0.008		
3	30	34.078	-0.012		
4	45	34.149	0.059		
5	60	34.496	0.406		
6	75	34.813	0.723		
7	90	35.064	0.974		
8	105	35.284	1.194		
9	120	35.478	1.388		
10	135	35.655	1.565		
11	150	35.802	1.712		
12	165	35.948	1.858		
13	180	36.078	1.988		
14	195	36.206	2.116		
15	210	36.314	2.224		
16	225	36.417	2.327		
17	240	36.517	2.427		
18	255	36.612	2.522		
19	270	36.703	2.613		
20	285	36.789	2.699		
21	300	36.872	2.782		
22	315	36.956	2.866		
23	330	37.026	2.936		
24	345	37.10	3.01		
25	360	37.167	3.077		
26	375	37.238	3.148		
27	390	37.302	3.212		
28	405	37.364	3.274		
29	420	37.427	3.337		
30	435	37.488	3.398		
31	450	37.551	3.461		
32	465	37.604	3.514		
33	480	37.656	3.566		
34	495	37.709	3.619		
35	510	37.764	3.674		
36	525	37.813	3.723		
37	540	37.867	3.777		
38	555	37.912	3.822		
39	570	37.962	3.872		
40	585	38.003	3.913		
41	600	38.044	3.954		
42	615	38.092	4.002		
43	630	38.131	4.041		
44	645	38.173	4.083		
45	660	38.216	4.126		
46	675	38.251	4.161		
47	690	38.292	4.202		
48	705	38.331	4.241		
49	720	38.369	4.279		
50	735	38.409	4.319		
51	750	38.441	4.351		
52	765	38.481	4.391		
53	780	38.513	4.423		
54	795	38.548	4.458		
55	810	38.58	4.49		
56	825	38.609	4.519		
57	840	38.646	4.556		




Contact Info
Address
Company Name
City, State/Province

Pumping Test - Water Level Data Page 2 of 2
Project: Jefferson Pump Tests
Number:
Client:

	Time [min]	Water Level [ft]	Drawdown [ft]
58	855	38.674	4.584
59	870	38.709	4.619
60	885	38.739	4.649
61	900	38.786	4.696

	Contact Info Address Company Name City, State/Province		Pumping Test Analysis Report		
			Project: Jefferson Pump Tests		
			Number:		
			Client:		
Location: Jefferson, Iowa		Pumping Test: Pump Test Well 8		Pumping Well: Well 8	
Test Conducted by: IDNR			Test Date: 12/5/2012		
Analysis Performed by:		New analysis 2		Analysis Date: 12/12/2012	
Aquifer Thickness: 50.00 ft		Discharge Rate: 1170 [U.S. gal/min]			
					
Calculation using Theis					
Observation Well	Transmissivity [ft ² /d]	Hydraulic Conductivity [ft/d]	Storage coefficient	Radial Distance to PW [ft]	
ob2	9.13×10^{-3}	1.83×10^2	3.51×10^{-4}	1870.0	

	Contact Info		Pumping Test - Water Level Data		Page 1 of 2
	Address		Project: Jefferson Pump Tests		
	Company Name		Number:		
	City, State/Province		Client:		
Location: Jefferson, Iowa		Pumping Test: Pump Test Well 8		Pumping Well: Well 8	
Test Conducted by: IDNR		Test Date: 12/5/2012		Discharge Rate: 1170 [U.S. gal/min]	
Observation Well: 0b3		Static Water Level [ft]: 35.88		Radial Distance to PW [ft]: 6126	
	Time [min]	Water Level [ft]	Drawdown [ft]		
1	0	35.884	0.004		
2	15	35.888	0.008		
3	30	35.893	0.013		
4	45	35.906	0.026		
5	60	35.914	0.034		
6	75	35.93	0.05		
7	90	35.949	0.069		
8	105	35.962	0.082		
9	120	35.985	0.105		
10	135	36.002	0.122		
11	150	36.025	0.145		
12	165	36.046	0.166		
13	180	36.065	0.185		
14	195	36.094	0.214		
15	210	36.114	0.234		
16	225	36.138	0.258		
17	240	36.161	0.281		
18	255	36.188	0.308		
19	270	36.209	0.329		
20	285	36.235	0.355		
21	300	36.261	0.381		
22	315	36.282	0.402		
23	330	36.306	0.426		
24	345	36.329	0.449		
25	360	36.35	0.47		
26	375	36.381	0.501		
27	390	36.403	0.523		
28	405	36.429	0.549		
29	420	36.452	0.572		
30	435	36.477	0.597		
31	450	36.502	0.622		
32	465	36.531	0.651		
33	480	36.554	0.674		
34	495	36.575	0.695		
35	510	36.60	0.72		
36	525	36.62	0.74		
37	540	36.644	0.764		
38	555	36.667	0.787		
39	570	36.686	0.806		
40	585	36.702	0.822		
41	600	36.73	0.85		
42	615	36.756	0.876		
43	630	36.784	0.904		
44	645	36.805	0.925		
45	660	36.818	0.938		
46	675	36.838	0.958		
47	690	36.865	0.985		
48	705	36.875	0.995		
49	720	36.897	1.017		
50	735	36.92	1.04		
51	750	36.932	1.052		
52	765	36.954	1.074		
53	780	36.976	1.096		
54	795	36.998	1.118		
55	810	37.019	1.139		
56	825	37.04	1.16		
57	840	37.058	1.178		



Contact Info
Address
Company Name
City, State/Province

Pumping Test - Water Level Data Page 2 of 2
Project: Jefferson Pump Tests
Number:
Client:

	Time [min]	Water Level [ft]	Drawdown [ft]
58	855	37.073	1.193
59	870	37.088	1.208
60	885	37.10	1.22
61	900	37.104	1.224
62	915	37.111	1.231
63	930	37.113	1.233



Contact Info
Address
Company Name
City, State/Province

Pumping Test Analysis Report

Project: Jefferson Pump Tests

Number:

Client:

Location: Jefferson, Iowa

Pumping Test: Pump Test Well 8

Pumping Well: Well 8

Test Conducted by: IDNR

Test Date: 12/5/2012

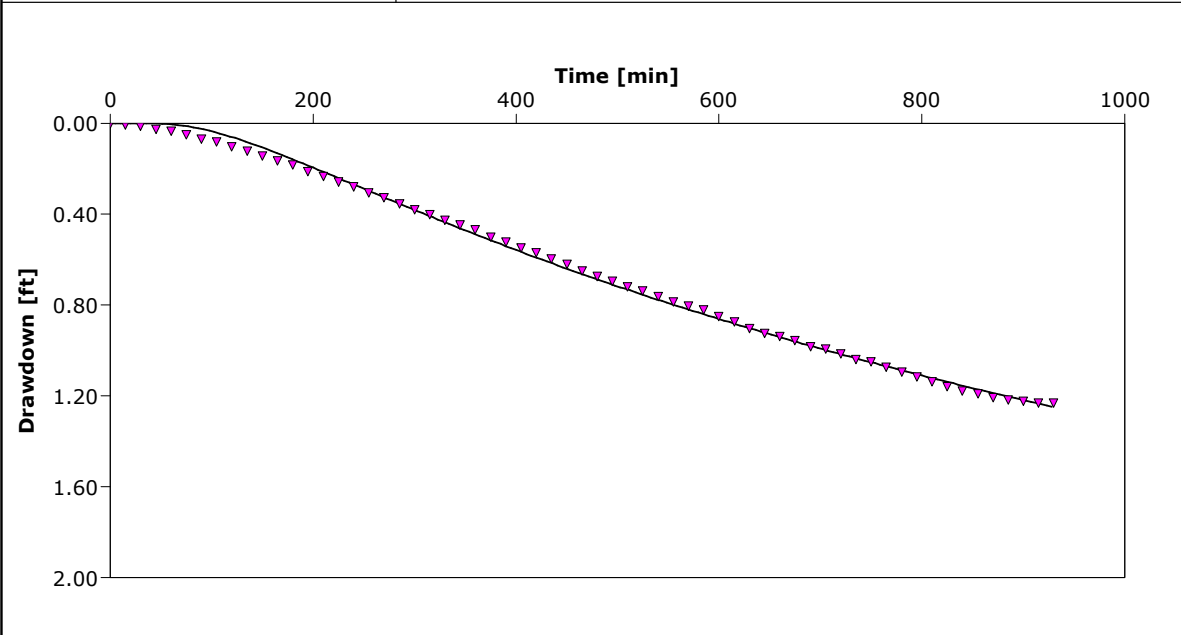
Analysis Performed by:

New analysis 1

Analysis Date: 12/12/2012

Aquifer Thickness: 50.00 ft

Discharge Rate: 1170 [U.S. gal/min]



Calculation using Theis

Observation Well	Transmissivity [ft ² /d]	Hydraulic Conductivity [ft/d]	Storage coefficient	Radial Distance to PW [ft]
0b3	1.47×10^4	2.93×10^2	2.59×10^{-4}	6126.0

**Iowa Department of Natural Resources
Geological and Water Survey
109 Trowbridge Hall
Iowa City, Iowa 52242-1319
(319) 335-1575
www.igsb.uiowa.edu**