

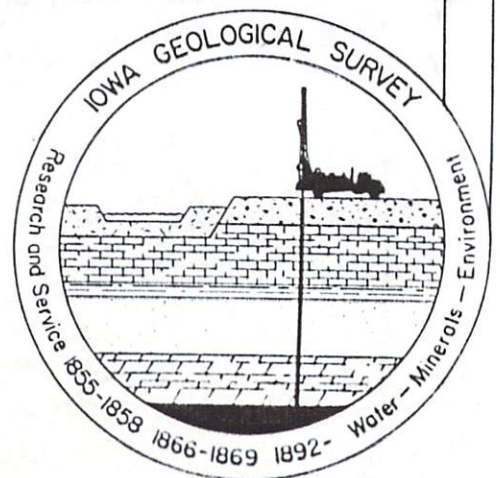
**SUPPLEMENTARY
REGIONAL GRAVITY DATA
FOR SOUTHWEST IOWA**

CALVIN CUMERLATO

**Open File Report 81-1
April 1981**

IOWA GEOLOGICAL SURVEY

DONALD L. KOCH, DIRECTOR and STATE GEOLOGIST
123 NORTH CAPITOL STREET, IOWA CITY, IOWA 52242



This research was supported in part by Contract No.
NRC-04-78-228 from the U.S. Nuclear Regulatory
Commission, office of Nuclear Regulatory Research.

This research was supported in part by Contract No.
NRC-04-78-228 from the U.S. Nuclear Regulatory
Commission, office of Nuclear Regulatory Research.

SUPPLEMENTARY REGIONAL GRAVITY DATA
FOR SOUTHWEST IOWA

In the summer of 1979 a regional grid of gravity stations at 6 mile spacings, located at approximate township centers, was established by Steven Daut (I.G.S. Open File Report, Jan., 1980). With these township center stations serving as base stations, 1341 new gravity stations were established by a series of third level loops using the Worden Prospector Model gravimeter owned by the Iowa Geological Survey. The field work for this report was conducted in the summer of 1980 in Adair, Audubon, Cass, Fremont, Guthrie, Harrison, Mills, Shelby and Pottawattamie counties, with the idea of completing a 1 mile grid over the northern portion of the Midcontinent Geophysical Anomaly in Southwest Iowa.

The stations are located as closely as possible to the centers of road intersections at the southwest corner of each section in the survey area. Where T-intersections were encountered, the stations were established on the North side of the East-West road or on the East side of the North-South road centered on the intersecting road. Stations are therefore numbered according to township, range and section numbers.

Road intersection elevations were taken from I.G.S. 7.5 minute topographic maps assumed accurate to ± 1 foot, and elevations were hand leveled in the field from the center of each intersection. The data was reduced using the program GRAVSUR (Kwon et al., 1977) modified for use on the Perkin-Elmer 3220 mini-computer owned by the Iowa Geological Survey. All gravity values, corrected to sea level using a Bouguer density of 2.67 gm/cm^3 , should be considered accurate to ± 1.5 milligals.

REFERENCES CITED

- Daut, Steven, 1980, "Regional Gravity Data for Southwest Iowa," Iowa Geological Survey Open File Report, 38 p.
- Kwon, B.D., Rudman, A.J. and Blakely, R.F., 1977, "Fortran Program for Reduction of Gravimeter Observations to Bouguer Anomaly," Dept. of Nat. Res. Geological Survey Occasional Paper 23, Bloomington, Ind., 32 p.

Principal Gravity Data

STATION NO.	N. LATITUDE (DEGREES)	W. LONGITUDE (DEGREES)	ELEVATION (METERS)	OBSERVED GRAVITY (MGALS)	FREE AIR GRAVITY (MGALS)	BOUGUER GRAVITY (MGALS)	BOUGUER ANOMALY (MGALS)
69-41- 2	48.8822	95.5378	387.54	86.6	181.5	147.1	-91.8
69-41- 3	48.8822	95.5558	287.73	91.6	188.3	148.2	-89.9
69-41-10	48.7881	95.5558	288.34	98.3	179.3	147.8	-91.8
69-41-11	48.7881	95.5378	381.75	86.4	179.5	145.8	-92.2
69-41-14	48.7733	95.5381	324.31	81.3	181.4	145.1	-92.9
69-41-15	48.7733	95.5567	311.81	84.4	188.7	145.8	-92.2
69-41-22	48.7592	95.5567	296.27	87.3	178.8	145.6	-92.4
69-41-23	48.7592	95.5381	319.74	82.3	181.8	145.2	-92.8
70-41- 2	48.8886	95.5353	315.16	186.3	283.6	168.3	-77.5
70-41- 3	48.8886	95.5544	297.49	112.4	284.2	178.9	-74.8
70-41-10	48.8742	95.5544	296.57	189.8	288.5	167.3	-78.5
70-41-15	48.8688	95.5558	382.97	184.9	198.4	164.5	-81.3
70-41-22	48.8453	95.5558	299.31	182.9	195.3	161.8	-84.8
70-41-26	48.8311	95.5364	323.39	93.8	193.6	157.4	-88.4
70-41-27	48.8311	95.5556	312.73	97.1	193.6	158.6	-87.2
70-41-34	48.8167	95.5556	289.87	99.8	189.2	156.8	-89.8
71-41- 4	48.9753	95.5733	381.45	166.2	259.3	225.5	-28.8
71-41- 9	48.9688	95.5658	296.57	159.8	258.5	217.4	-36.1
71-41-10	48.9688	95.5544	297.49	156.7	248.5	215.3	-38.3
71-41-15	48.9464	95.5544	296.88	148.3	239.9	206.7	-46.8
71-41-27	48.9172	95.5539	299.62	138.3	222.7	189.2	-64.3
71-41-34	48.9028	95.5539	297.18	124.8	216.5	183.2	-78.3
72-41- 3	41.88611	95.5536	352.84	179.6	288.2	248.8	-12.4
72-41-15	41.88325	95.5542	328.35	181.1	279.9	244.1	-17.1
72-41-16	41.88325	95.5642	329.18	188.4	281.9	245.1	-16.1
72-41-21	41.88997	95.5645	319.74	177.5	276.2	248.4	-28.8
72-41-28	41.88831	95.5645	334.98	172.2	275.5	238.1	-23.2
72-41-33	48.98883	95.5645	388.15	174.2	269.3	234.9	-26.4
73-39- 6	41.1469	95.3822	345.83	287.6	314.1	275.5	-1.8
73-39- 7	41.1328	95.3822	328.58	289.3	318.7	273.9	-2.6
73-39-18	41.1186	95.3822	353.57	288.5	389.6	278.1	-6.5
73-41- 2	41.1481	95.5353	348.77	194.8	299.2	261.8	-7.9
73-41- 3	41.1481	95.5539	374.38	185.7	381.2	259.4	-9.6
73-41-11	41.1336	95.5358	337.41	196.8	388.1	262.4	-6.6
73-41-14	41.1189	95.5358	338.82	196.3	388.6	262.8	-6.2
73-41-15	41.1261	95.5358	357.53	191.9	382.2	262.2	-6.7
73-41-23	41.1114	95.5358	327.36	198.2	299.2	262.6	-6.4
73-41-26	41.88969	95.5347	366.68	188.1	381.2	268.2	-8.8
73-41-34	41.88825	95.5347	351.74	198.8	298.5	259.2	-9.8
73-41-35	41.88758	95.5347	356.62	187.7	297.8	257.9	-11.1
73-43- 2	41.1488	95.7725	481.73	194.8	318.8	273.8	-2.4
73-43- 5	41.1497	95.8122	298.78	228.4	312.6	279.1	3.7
73-43-11	41.1322	95.7692	397.46	194.4	317.8	272.6	-2.9
73-43-17	41.1247	95.8131	299.81	219.5	311.8	278.4	2.9
73-43-18	41.1211	95.8314	294.74	222.1	313.1	288.1	4.7
74-39- 5	41.2328	95.3642	378.94	284.9	319.4	277.9	1.3
74-39- 7	41.2178	95.3733	375.21	283.1	318.9	276.9	8.3
74-39- 8	41.2188	95.3642	366.68	285.4	318.5	277.5	1.8
74-39-15	41.2836	95.3258	369.11	286.9	328.8	279.5	2.9
74-39-18	41.2883	95.3733	348.16	288.2	313.1	275.1	-1.5
74-39-19	41.1894	95.3733	342.98	218.6	316.4	278.1	1.5
74-39-38	41.1783	95.3733	333.76	212.7	315.7	278.4	1.8
74-39-31	41.1611	95.3733	356.62	286.8	316.8	277.8	8.4

STATION NO.	N. LATITUDE (DEGREES)	W. LONGITUDE (DEGREES)	ELEVATION (METERS)	OBSERVED GRAVITY (MGALS)	FREE AIR GRAVITY (MGALS)	BOUGUER GRAVITY (MGALS)	BOUGUER ANOMALY (MGALS)
74-41- 1	41.2319	95.5161	384.05	199.2	317.7	274.7	-1.7
74-41- 2	41.2319	95.5353	351.44	206.9	315.4	276.1	-0.4
74-41-14	41.2025	95.5350	352.65	203.0	311.8	272.4	-4.1
74-41-23	41.1886	95.5350	350.52	201.9	310.1	270.9	-5.6
74-41-26	41.1742	95.5347	371.25	197.0	311.6	270.1	-6.4
74-41-27	41.1697	95.5533	349.30	201.5	309.3	270.3	-6.2
74-41-34	41.1594	95.5531	370.03	197.5	311.7	270.3	-6.2
74-42- 1	41.2311	95.6300	339.55	210.1	314.8	276.9	0.4
74-42- 2	41.2311	95.6494	374.90	201.9	317.6	275.6	-0.8
74-42- 3	41.2311	95.6506	352.96	206.4	315.4	275.9	-0.6
74-42- 4	41.2311	95.6870	368.20	202.7	316.3	275.1	-1.3
74-42- 6	41.2314	95.7256	359.97	203.3	314.4	274.1	-2.3
74-42- 7	41.2169	95.7256	384.05	198.9	317.4	274.5	-2.0
74-42- 9	41.2094	95.6878	364.85	204.1	316.7	275.9	-0.5
74-42-10	41.2169	95.6506	342.29	209.4	315.0	276.7	0.3
74-42-12	41.2169	95.6300	349.00	207.7	315.4	276.4	-0.1
74-42-15	41.2022	95.6683	329.79	211.4	313.2	276.3	-0.1
74-42-16	41.1989	95.6875	330.10	212.1	313.9	277.0	0.6
74-42-18	41.1947	95.7256	388.32	199.3	319.1	275.7	-0.7
74-42-19	41.1842	95.7256	388.62	199.3	319.3	275.8	-0.7
74-42-20	41.1914	95.7019	372.47	202.3	317.3	275.6	-0.8
74-42-21	41.1878	95.6875	329.79	210.9	312.7	275.8	-0.6
74-42-22	41.1878	95.6683	328.27	210.7	312.0	275.3	-1.2
74-42-31	41.1617	95.7250	358.14	203.9	314.4	274.3	-2.1
74-42-32	41.1592	95.7019	318.52	211.0	309.3	273.7	-2.0
74-43- 1	41.2386	95.7447	366.37	199.2	312.2	271.2	-4.2
74-43- 2	41.2386	95.7639	340.16	203.9	300.9	270.8	-4.6
74-43- 3	41.2386	95.7758	356.62	199.0	309.0	269.1	-6.3
74-43- 9	41.2239	95.7975	318.52	209.4	307.7	272.0	-3.4
74-43-12	41.2178	95.7447	335.89	208.0	311.7	274.1	-1.4
74-43-16	41.2106	95.7975	309.37	212.6	308.1	273.5	-2.0
74-43-20	41.1880	95.8158	296.27	217.7	309.2	276.0	0.5
74-43-22	41.1914	95.7736	309.98	215.5	311.2	276.5	1.0
74-43-24	41.1947	95.7356	391.67	197.6	318.5	274.7	-0.8
74-43-26	41.1733	95.7522	383.44	199.6	317.9	275.0	-0.4
74-43-29	41.1733	95.8172	296.57	219.1	310.7	277.5	2.0
74-43-35	41.1592	95.7597	390.75	197.5	318.1	274.4	-1.1
74-43-36	41.1592	95.7442	358.14	203.4	313.9	273.8	-1.7
75-40- 1	41.3114	95.4061	330.40	225.0	327.0	290.0	5.0
75-40- 2	41.3114	95.4200	334.67	223.9	327.2	289.7	5.5
75-40- 3	41.3186	95.4394	360.27	216.5	327.6	287.3	3.1
75-40- 4	41.3189	95.4509	372.77	211.7	326.7	285.0	0.8
75-40- 5	41.3189	95.4778	372.47	210.9	325.8	284.2	-0.1
75-40- 6	41.3189	95.4961	383.74	207.3	325.8	282.8	-1.4
75-40- 7	41.3044	95.4961	381.92	209.5	327.4	284.7	0.4
75-40- 8	41.3044	95.4770	393.80	207.5	329.0	284.9	0.7
75-40- 9	41.3044	95.4509	360.50	214.5	328.2	287.0	2.7
75-40-10	41.3044	95.4394	365.46	216.2	328.9	280.1	3.8
75-40-15	41.2094	95.4394	364.54	216.5	329.0	288.2	4.0
75-40-16	41.2094	95.4589	377.34	213.0	329.4	287.2	3.0
75-40-17	41.2094	95.4778	383.44	210.7	329.0	286.1	1.9
75-40-18	41.2094	95.4961	352.65	217.0	325.8	286.4	2.1
75-40-19	41.2753	95.4961	363.32	214.6	326.7	286.0	1.0
75-40-20	41.2753	95.4778	393.19	207.9	329.2	285.3	1.0

STATION NO.	N. LATITUDE (DEGREES)	W. LONGITUDE (DEGREES)	ELEVATION (METERS)	OBSERVED GRAVITY (MGALS)	FREE AIR GRAVITY (MGALS)	BOUGUER GRAVITY (MGALS)	BOUGUER ANOMALY (MGALS)
75-41- 1	41.3186	95.5158	369.72	289.4	323.5	282.2	-2.1
75-41- 2	41.3186	95.5347	398.75	283.6	324.1	288.4	-3.8
75-41- 3	41.3186	95.5536	376.12	285.8	321.1	279.8	-5.2
75-41- 4	41.3186	95.5731	356.31	287.6	317.5	277.7	-6.6
75-41- 5	41.3186	95.5919	379.17	288.8	325.8	283.4	-8.7
75-41- 6	41.3186	95.6153	367.28	289.6	323.8	281.9	-18.2
75-41- 7	41.3842	95.6156	381.92	281.4	319.2	276.5	-7.8
75-41- 8	41.3842	95.5922	378.83	285.8	328.8	278.6	-5.6
75-41- 9	41.3842	95.5731	363.32	288.3	328.4	279.8	-4.5
75-41-10	41.3842	95.5539	371.55	288.6	323.3	281.7	-2.5
75-41-11	41.3842	95.5347	375.82	289.2	325.2	283.1	-1.1
75-41-12	41.3842	95.5158	368.88	213.6	324.9	284.6	8.3
75-41-13	41.2894	95.5158	338.94	219.6	324.2	286.3	2.1
75-41-14	41.2894	95.5347	378.64	212.8	326.3	284.9	8.6
75-41-15	41.2894	95.5539	388.32	286.3	326.1	282.7	-1.6
75-41-16	41.2894	95.5731	353.26	213.1	322.1	282.6	-1.6
75-41-17	41.2894	95.5922	359.86	218.8	321.6	281.4	-2.9
75-41-18	41.2894	95.6069	361.88	289.3	321.8	288.5	-3.7
75-41-19	41.2758	95.6188	379.17	286.8	323.8	281.4	-2.9
75-41-20	41.2758	95.5922	341.87	216.3	321.6	283.4	-8.8
75-41-21	41.2758	95.5731	384.96	287.8	326.6	283.5	-8.8
75-41-22	41.2758	95.5539	382.83	289.1	327.2	284.4	8.1
75-41-23	41.2758	95.5347	368.58	214.9	326.1	285.8	1.5
75-41-25	41.2683	95.5286	347.78	217.5	324.8	285.9	1.7
75-41-26	41.2683	95.5347	338.63	219.6	324.1	286.2	2.8
75-41-27	41.2683	95.5539	371.55	212.3	326.9	285.3	1.1
75-41-28	41.2683	95.5731	382.22	289.8	326.9	284.2	-8.1
75-41-29	41.2683	95.5922	339.85	218.8	322.9	284.9	8.6
75-41-30	41.2683	95.6188	355.89	213.7	323.3	283.6	-8.7
75-41-31	41.2461	95.6188	334.67	219.1	322.4	285.8	8.7
75-41-33	41.2461	95.5731	371.55	211.8	326.5	284.9	8.6
75-41-34	41.2461	95.5539	378.33	212.1	326.4	284.9	8.7
75-41-35	41.2461	95.5347	334.98	219.8	323.2	285.7	1.5
75-41-36	41.2461	95.5158	383.44	288.5	326.8	284.8	-8.3
75-42- 1	41.3183	95.6388	342.29	285.9	311.6	273.3	-11.8
75-42- 2	41.3183	95.6494	382.83	195.3	313.5	278.7	-13.6
75-42- 3	41.3183	95.6686	362.18	198.7	318.4	269.9	-14.4
75-42- 4	41.3183	95.6872	375.82	193.9	389.9	267.9	-16.4
75-42- 6	41.3256	95.7297	358.14	193.1	383.6	263.5	-28.7
75-42- 8	41.3839	95.7164	371.86	196.4	311.1	269.5	-14.7
75-42- 9	41.3839	95.6872	349.91	283.1	311.8	271.9	-12.4
75-42-10	41.3839	95.6686	353.57	283.6	312.7	273.2	-11.1
75-42-13	41.2894	95.6358	383.44	282.2	328.5	277.6	-6.6
75-42-14	41.2931	95.6494	347.47	288.5	315.7	276.9	-7.4
75-42-15	41.2894	95.6686	342.68	288.6	314.4	276.8	-8.2
75-42-16	41.2894	95.6872	346.25	286.4	313.2	274.5	-9.8
75-42-18	41.2894	95.7383	377.34	196.9	313.4	271.2	-13.1
75-42-19	41.2747	95.7383	377.95	199.9	316.5	274.3	-18.8
75-42-20	41.2747	95.7867	356.62	286.2	316.2	276.3	-7.9
75-42-22	41.2747	95.6686	344.42	218.9	317.1	278.6	-5.6
75-42-24	41.2747	95.6358	373.38	286.5	321.7	288.8	-4.3
75-42-25	41.2688	95.6388	362.18	218.9	322.7	282.2	-2.1
75-42-27	41.2642	95.6686	327.85	216.1	317.8	288.4	-3.8
75-42-28	41.2642	95.6872	358.14	288.5	319.8	278.9	-5.3
75-42-29	41.2688	95.7117	386.18	281.6	328.8	277.6	-6.7
75-42-30	41.2617	95.7347	376.12	282.5	318.6	276.5	-7.7
75-42-33	41.2461	95.6925	362.71	289.6	321.5	288.9	-3.3
75-42-34	41.2461	95.6589	334.67	216.8	328.8	282.6	-1.7
75-42-35	41.2461	95.6494	357.23	212.5	322.8	282.8	-1.5

STATION NO.	N. LATITUDE (DEGREES)	W. LONGITUDE (DEGREES)	ELEVATION (METERS)	OBSERVED GRAVITY (MGALS)	FREE AIR GRAVITY (MGALS)	BOUGUER GRAVITY (MGALS)	BOUGUER ANOMALY (MGALS)
75-42-36	41.2461	95.6300	360.58	212.4	323.7	283.4	-0.9
76-39- 3	41.4053	95.3244	378.26	216.3	333.1	290.7	-1.3
76-39- 4	41.4053	95.3436	348.39	220.6	328.1	289.1	-2.9
76-39- 6	41.4055	95.3811	365.15	212.8	325.5	284.7	-7.4
76-39- 7	41.3917	95.3811	344.73	220.7	327.1	288.5	-3.5
76-39- 9	41.3911	95.3436	356.62	222.0	332.1	292.2	0.2
76-39-10	41.3911	95.3244	382.52	218.2	336.3	293.5	1.4
76-39-15	41.3761	95.3244	398.98	217.2	340.3	295.7	3.7
76-39-16	41.3764	95.3436	365.76	222.9	335.8	294.9	2.9
76-39-19	41.3694	95.3722	338.94	227.5	332.1	294.2	2.2
76-39-20	41.3639	95.3625	349.30	226.7	334.5	295.4	3.4
76-39-21	41.3620	95.3436	368.81	224.2	338.0	296.7	4.7
76-39-22	41.3620	95.3247	396.85	219.9	342.3	297.9	5.9
76-39-27	41.3475	95.3247	373.38	226.7	341.9	300.2	8.1
76-39-28	41.3475	95.3436	381.00	223.8	341.4	298.8	6.7
76-39-29	41.3478	95.3625	363.32	226.3	338.4	297.8	5.7
76-39-30	41.3506	95.3814	338.33	228.7	333.1	295.3	3.2
76-39-31	41.3294	95.3814	359.06	227.3	338.1	298.0	5.9
76-39-32	41.3294	95.3625	374.90	225.0	340.7	298.8	6.8
76-39-33	41.3331	95.3436	393.19	221.9	343.3	299.3	7.2
76-39-34	41.3331	95.3247	354.18	231.5	340.8	301.2	9.1
76-40- 1	41.4058	95.4003	385.88	206.4	325.4	282.3	-9.8
76-40- 2	41.4058	95.4169	375.82	206.4	322.4	280.4	-11.7
76-40- 3	41.4058	95.4389	380.39	203.6	321.0	278.4	-13.6
76-40- 4	41.4058	95.4581	389.84	198.8	319.1	275.5	-16.6
76-40- 5	41.4058	95.4772	397.16	195.9	318.4	274.0	-18.1
76-40- 6	41.4058	95.4953	383.74	196.6	315.0	272.1	-20.0
76-40- 7	41.3914	95.4953	393.19	198.4	319.7	275.7	-16.4
76-40- 8	41.3914	95.4772	383.74	202.6	321.0	278.1	-14.0
76-40- 9	41.3914	95.4581	380.70	206.0	323.5	280.9	-11.2
76-40-10	41.3914	95.4389	375.82	207.8	323.8	281.8	-10.3
76-40-11	41.3914	95.4197	395.63	205.4	327.5	283.2	-8.9
76-40-12	41.3914	95.4003	377.65	211.4	327.9	285.6	-6.4
76-40-13	41.3767	95.4003	371.86	216.1	330.9	289.3	-2.8
76-40-14	41.3767	95.4197	375.51	213.0	328.9	286.9	-5.2
76-40-15	41.3767	95.4389	377.34	210.5	326.9	284.7	-7.4
76-40-16	41.3767	95.4583	362.41	211.7	323.5	283.0	-9.1
76-40-17	41.3767	95.4772	370.33	208.4	322.7	281.2	-10.8
76-40-18	41.3767	95.4953	373.38	205.9	321.1	279.4	-12.7
76-40-19	41.3622	95.4953	384.66	206.5	325.3	282.2	-9.9
76-40-20	41.3622	95.4775	366.07	212.5	325.5	284.5	-7.5
76-40-21	41.3622	95.4586	373.99	212.2	327.6	285.7	-6.3
76-40-22	41.3622	95.4389	355.09	218.3	327.9	288.2	-3.9
76-40-23	41.3622	95.4197	368.81	217.7	331.5	290.3	-1.8
76-40-24	41.3622	95.4005	340.77	225.5	330.7	292.5	0.5
76-40-26	41.3478	95.4197	373.38	218.8	334.1	292.3	0.2
76-40-27	41.3478	95.4389	348.69	222.5	330.1	291.1	-1.0
76-40-28	41.3478	95.4586	367.89	216.4	329.9	288.8	-3.3
76-40-29	41.3478	95.4775	378.87	212.6	329.5	287.1	-5.0
76-40-32	41.3331	95.4775	383.74	214.0	332.4	289.5	-2.6
76-40-33	41.3331	95.4586	359.06	220.9	331.7	291.5	-0.6
76-40-34	41.3331	95.4389	354.18	224.1	333.4	293.8	1.7
76-40-35	41.3331	95.4197	339.24	228.8	333.5	295.6	3.5
76-40-36	41.3331	95.4055	331.32	231.6	333.8	296.8	4.7

STATION NO.	N. LATITUDE (DEGREES)	W. LONGITUDE (DEGREES)	ELEVATION (METERS)	OBSERVED GRAVITY (HGALS)	FREE AIR GRAVITY (HGALS)	BOUGUER GRAVITY (MGALS)	BOUGUER ANOMALY (MGALS)
76-41- 1	41.4855	95.5153	392.28	192.6	313.7	269.8	-22.3
76-41- 2	41.4855	95.5345	408.74	186.5	312.6	266.9	-25.2
76-41- 3	41.4858	95.5536	364.54	193.9	306.4	265.7	-26.4
76-41- 4	41.4855	95.5731	383.13	187.4	305.6	262.8	-29.3
76-41- 5	41.4855	95.5917	365.15	189.6	302.3	261.4	-30.7
76-41- 6	41.4855	95.6150	359.66	188.2	299.2	258.9	-33.1
76-41- 7	41.3947	95.6150	399.29	182.9	306.1	261.4	-30.7
76-41-10	41.3839	95.5536	404.17	191.7	316.4	271.2	-20.9
76-41-11	41.3842	95.5345	397.46	195.4	318.1	273.6	-18.5
76-41-12	41.3842	95.5153	374.30	202.5	318.0	276.2	-15.9
76-41-13	41.3767	95.5153	375.51	203.8	319.7	277.7	-14.4
76-41-15	41.3767	95.5536	402.64	193.8	318.0	273.0	-19.1
76-41-16	41.3767	95.5733	387.10	194.5	314.0	270.7	-21.4
76-41-17	41.3767	95.5917	354.79	200.7	310.1	270.5	-21.6
76-41-19	41.3547	95.6108	386.18	197.6	316.8	273.6	-18.5
76-41-20	41.3620	95.5917	378.56	199.4	316.2	273.8	-18.3
76-41-21	41.3620	95.5733	392.28	168.0	289.1	245.2	-46.9
76-41-22	41.3620	95.5536	375.51	203.4	319.3	277.3	-14.8
76-41-23	41.3620	95.5345	381.31	204.3	322.0	279.3	-12.8
76-41-24	41.3620	95.5153	379.48	206.3	323.4	281.0	-11.1
76-41-25	41.3475	95.5153	382.22	209.0	326.9	284.2	-7.9
76-41-26	41.3475	95.5345	373.69	209.4	324.7	282.9	-9.2
76-41-27	41.3475	95.5536	375.82	207.3	323.3	281.3	-10.8
76-41-28	41.3475	95.5733	371.25	206.5	321.1	279.5	-12.6
76-41-31	41.3331	95.6044	387.40	202.8	322.3	279.0	-13.1
76-41-32	41.3331	95.5917	366.07	208.9	321.8	280.9	-11.2
76-41-33	41.3331	95.5733	377.04	200.2	324.6	282.4	-9.7
76-41-34	41.3331	95.5536	379.78	209.0	326.2	283.7	-8.4
76-41-35	41.3331	95.5345	355.70	216.1	325.9	286.1	-6.0
76-41-36	41.3331	95.5153	382.52	211.8	329.9	287.1	-5.0
76-42- 1	41.4855	95.6294	363.32	185.8	297.9	257.3	-34.8
76-42- 4	41.4855	95.6872	370.33	177.2	291.5	250.1	-42.0
76-42- 5	41.4855	95.7064	369.11	175.5	289.4	248.1	-43.9
76-42- 7	41.3911	95.7250	376.73	177.1	293.4	251.2	-40.8
76-42- 8	41.3911	95.7064	370.64	180.3	294.7	253.2	-38.9
76-42- 9	41.3911	95.6872	356.62	185.4	295.5	255.6	-36.5
76-42-11	41.3911	95.6486	370.64	186.7	301.0	259.6	-32.5
76-42-12	41.3911	95.6294	348.69	193.8	301.4	262.4	-29.7
76-42-14	41.3764	95.6486	374.90	190.0	305.7	263.7	-28.3
76-42-15	41.3764	94.6775	322.78	192.3	291.9	255.8	-36.3
76-42-16	41.3764	95.6872	341.38	193.5	298.8	260.7	-31.4
76-42-18	41.3764	95.7250	368.20	184.4	298.0	256.8	-35.3
76-42-19	41.3764	95.7250	357.84	191.0	301.4	261.4	-30.7
76-42-20	41.3620	95.7064	355.70	193.0	302.8	263.0	-29.1
76-42-24	41.3620	95.6203	342.90	204.4	310.2	271.8	-20.2
76-42-25	41.3547	95.6297	358.45	201.8	312.4	272.3	-19.7
76-42-27	41.3547	95.6639	353.26	199.9	308.9	269.4	-22.6
76-42-28	41.3547	95.6781	369.42	195.1	309.1	267.7	-24.3
76-42-29	41.3511	95.7122	322.40	203.5	303.0	267.0	-25.1
76-42-30	41.3511	95.7250	336.80	198.9	302.8	265.2	-26.9
76-42-31	41.3331	95.7250	365.15	197.5	310.2	269.4	-22.7
76-42-32	41.3364	95.7064	345.95	202.4	309.2	270.5	-21.6
76-42-33	41.3364	95.6701	363.93	200.9	313.2	272.5	-19.6
76-42-34	41.3331	95.6639	388.01	197.6	317.4	274.0	-18.1
76-42-35	41.3331	95.6447	388.01	199.4	319.1	275.7	-16.4
76-42-36	41.3331	95.6297	336.80	211.8	315.7	278.0	-14.0
76-43- 1	41.4131	95.7439	375.82	165.8	281.8	239.7	-52.3
76-43- 2	41.4855	95.7533	377.04	166.5	282.9	240.7	-51.3
76-43- 3	41.4855	95.7772	371.86	164.2	278.9	237.3	-54.7

STATION NO.	N. LATITUDE (DEGREES)	W. LONGITUDE (DEGREES)	ELEVATION (METERS)	OBSERVED GRAVITY (MGALS)	FREE AIR GRAVITY (MGALS)	BOUGUER GRAVITY (MGALS)	BOUGUER ANOMALY (MGALS)
76-43-11	41.3911	95.7583	384.05	170.3	288.8	245.8	-46.2
76-43-12	41.3911	95.7442	351.44	180.2	288.6	249.3	-42.8
76-43-13	41.3764	95.7442	335.89	188.9	292.6	255.0	-37.0
76-43-14	41.3764	95.7542	374.30	179.3	294.8	253.0	-39.1
76-43-22	41.3658	95.7825	388.62	176.9	296.9	253.4	-38.7
76-43-25	41.3478	95.7447	338.94	190.2	294.8	256.8	-27.4
76-43-26	41.3478	95.7622	362.71	182.8	294.8	254.2	-30.1
76-43-28	41.3511	95.8022	401.42	178.0	301.9	256.9	-35.1
76-43-35	41.3331	95.7592	320.04	196.6	295.4	259.6	-24.7
77-31- 1	41.4897	94.3789	381.92	199.0	316.9	274.1	-25.5
77-31- 2	41.4897	94.3981	372.77	205.1	320.1	278.4	-21.3
77-31- 3	41.4897	94.4172	392.28	204.9	326.0	282.1	-17.5
77-31- 4	41.4897	94.4364	396.24	208.0	330.3	285.9	-13.7
77-31- 5	41.4897	94.4558	391.97	212.4	333.4	289.5	-10.1
77-31- 6	41.4897	94.4725	367.59	220.9	334.3	293.2	-6.4
77-31- 8	41.4750	94.4558	367.59	213.8	327.3	286.2	-13.5
77-31- 9	41.4750	94.4364	398.98	203.1	326.2	281.5	-10.1
77-31-10	41.4750	94.4172	391.06	200.6	321.3	277.6	-22.1
77-31-11	41.4750	94.3981	372.47	200.2	315.2	273.5	-26.1
77-31-12	41.4750	94.3789	360.88	198.1	309.5	269.1	-30.5
77-31-13	41.4600	94.3789	385.57	186.1	305.1	262.0	-37.6
77-31-14	41.4600	94.3981	391.36	189.7	310.5	266.7	-33.0
77-31-15	41.4600	94.4172	389.84	195.7	316.0	272.4	-27.3
77-31-17	41.4600	94.4558	384.05	206.3	324.8	281.9	-17.8
77-31-18	41.4600	94.4725	402.03	206.0	330.1	285.1	-14.5
77-31-19	41.4464	94.4725	394.41	203.6	325.4	281.2	-18.4
77-31-20	41.4464	94.4558	394.41	199.9	321.6	277.5	-22.2
77-31-21	41.4464	94.4364	386.49	196.8	316.1	272.9	-26.8
77-31-22	41.4464	94.4172	364.85	195.1	307.7	266.9	-32.7
77-31-23	41.4389	94.3981	356.31	188.7	298.6	258.7	-40.9
77-31-25	41.4319	94.3789	382.22	176.4	294.4	251.6	-48.0
77-31-27	41.4319	94.4172	365.76	190.1	303.0	262.1	-37.6
77-31-28	41.4319	94.4364	388.32	192.0	311.8	268.4	-31.3
77-31-29	41.4319	94.4558	371.25	201.1	315.7	274.2	-25.5
77-31-30	41.4319	94.4725	374.30	204.1	319.6	277.7	-21.9
77-31-31	41.4175	94.4725	388.62	196.2	316.1	272.6	-27.0
77-31-32	41.4175	94.4558	371.25	196.6	311.2	269.7	-30.0
77-31-33	41.4175	94.4364	377.95	190.4	307.1	264.8	-34.9
77-31-34	41.4175	94.4172	381.00	182.4	299.9	257.3	-42.3
77-31-35	41.4175	94.3981	375.21	177.9	293.7	251.7	-47.9
77-31-36	41.4175	94.3789	358.14	178.5	289.0	248.9	-50.7
77-32- 1	41.4069	94.4922	397.76	224.8	347.6	303.1	3.4
77-32- 2	41.4903	94.5117	391.67	222.1	343.0	299.2	-0.5
77-32- 3	41.4903	94.5305	406.91	222.7	348.3	302.8	3.1
77-32- 4	41.4903	94.5500	414.22	224.9	352.7	306.4	6.7
77-32- 5	41.4903	94.5692	420.32	227.6	357.3	310.3	10.6
77-32- 6	41.4903	94.5869	398.68	235.8	358.8	314.2	14.6
77-32- 7	41.4756	94.5869	417.58	227.8	356.7	309.9	10.3
77-32- 8	41.4756	94.5692	421.23	223.1	353.1	305.9	6.3
77-32-13	41.4611	94.4922	411.48	207.1	334.1	288.0	-11.6
77-32-14	41.4611	94.5117	403.56	212.1	336.6	291.5	-0.2
77-32-15	41.4611	94.5305	394.41	217.0	338.8	294.6	-5.0
77-32-16	41.4611	94.5500	424.59	214.3	345.3	297.8	-1.8
77-32-17	41.4611	94.5689	399.90	223.3	346.8	302.0	2.4
77-32-18	41.4611	94.5869	417.88	223.2	352.2	305.4	5.7
77-32-19	41.4467	94.5867	422.15	217.6	347.9	300.7	1.0
77-32-20	41.4467	94.5689	429.16	212.5	344.9	296.9	-2.8
77-32-21	41.4467	94.5495	413.61	212.1	339.7	293.4	-6.2
77-32-22	41.4467	94.5303	410.87	209.3	336.1	290.1	-9.5

STATION NO.	N. LATITUDE (DEGREES)	W. LONGITUDE (DEGREES)	ELEVATION (METERS)	OBSERVED GRAVITY (MGALS)	FREE AIR GRAVITY (MGALS)	BOUGUER GRAVITY (MGALS)	BOUGUER ANOMALY (MGALS)
77-32-23	41.4467	94.5114	401.42	208.6	332.5	287.6	-12.1
77-32-24	41.4467	94.4922	373.99	211.5	326.9	285.8	-14.6
77-32-25	41.4322	94.4919	383.74	206.2	324.6	281.7	-17.9
77-32-26	41.4322	94.5114	412.70	201.9	329.3	283.1	-16.5
77-32-27	41.4322	94.5303	421.84	202.9	333.1	285.9	-13.7
77-32-28	41.4322	94.5495	401.73	210.5	334.5	289.6	-10.1
77-32-29	41.4322	94.5683	424.59	200.9	339.9	292.4	-7.3
77-32-30	41.4322	94.5867	426.72	211.9	343.5	295.8	-3.9
77-32-31	41.4181	94.5867	436.78	205.1	339.9	291.8	-8.7
77-32-32	41.4181	94.5683	439.22	201.4	337.8	287.8	-11.8
77-32-33	41.4181	94.5492	417.58	203.8	331.9	285.2	-14.5
77-32-34	41.4181	94.5300	413.00	201.1	328.5	282.3	-17.3
77-32-35	41.4181	94.5111	412.09	198.1	325.3	279.2	-20.5
77-32-36	41.4181	94.4919	410.87	194.7	321.5	275.5	-24.2
77-33- 1	41.4897	94.6058	410.87	235.8	361.8	315.8	16.1
77-33- 2	41.4897	94.6250	422.15	235.3	365.6	318.4	18.7
77-33- 3	41.4897	94.6450	428.85	236.7	369.8	321.1	21.4
77-33- 4	41.4897	94.6639	408.43	243.5	369.5	323.8	24.1
77-33- 6	41.4897	94.6919	434.65	242.3	376.4	327.8	28.1
77-33- 7	41.4753	94.6919	403.86	246.3	378.9	325.8	26.1
77-33- 9	41.4753	94.6639	429.77	236.4	369.1	321.8	21.3
77-33-10	41.4753	94.6450	421.84	235.1	365.3	318.1	18.4
77-33-11	41.4753	94.6250	432.82	229.5	363.1	314.7	15.8
77-33-12	41.4753	94.6058	416.36	230.1	358.6	312.8	12.4
77-33-13	41.4611	94.6058	419.41	225.8	354.4	307.5	7.8
77-33-14	41.4611	94.6250	413.92	230.1	357.8	311.5	11.8
77-33-15	41.4611	94.6447	429.46	230.1	362.6	314.6	14.9
77-33-16	41.4611	94.6639	406.30	238.3	363.7	318.3	18.6
77-33-17	41.4611	94.6831	427.33	237.1	369.8	321.2	21.5
77-33-18	41.4611	94.7011	403.56	245.3	369.8	324.7	25.8
77-33-19	41.4467	94.7011	398.68	243.4	366.4	321.8	22.1
77-33-20	41.4467	94.6831	418.80	235.8	365.1	318.2	18.6
77-33-21	41.4467	94.6636	400.51	236.2	359.8	315.8	15.3
77-33-22	41.4467	94.6444	412.09	229.6	356.8	310.7	11.8
77-33-23	41.4467	94.6250	404.47	227.7	352.5	307.2	7.6
77-33-24	41.4467	94.6058	435.26	216.9	351.2	302.5	2.9
77-33-25	41.4319	94.6058	412.09	217.1	344.3	298.2	-1.4
77-33-26	41.4319	94.6250	395.02	224.8	346.7	302.5	2.8
77-33-28	41.4319	94.6636	392.89	233.3	354.6	310.6	10.9
77-33-29	41.4319	94.6828	397.46	236.3	358.9	314.5	14.8
77-33-31	41.4175	94.7005	413.00	232.5	360.8	313.8	14.1
77-33-32	41.4175	94.6828	416.05	227.8	356.2	309.6	10.8
77-33-33	41.4175	94.6636	409.96	225.8	351.5	305.6	6.8
77-33-34	41.4175	94.6444	407.52	221.6	347.3	301.7	2.1
77-33-35	41.4175	94.6250	417.27	215.3	344.1	297.4	-2.3
77-33-36	41.4175	94.6058	429.46	208.7	341.2	293.2	-6.5
77-34- 1	41.4894	94.7200	406.60	249.8	375.3	329.8	30.1
77-34- 2	41.4819	94.7394	420.32	247.3	377.8	330.8	30.3
77-34- 3	41.4925	94.7589	408.43	252.0	378.0	332.3	32.6
77-34- 4	41.4894	94.7783	413.00	250.9	378.3	332.1	32.5
77-34- 5	41.4894	94.7978	393.50	255.5	376.9	332.9	33.3
77-34- 7	41.4753	94.8158	388.62	255.9	375.9	332.4	32.7
77-34- 9	41.4819	94.7783	400.20	252.7	376.2	331.4	31.8
77-34-10	41.4819	94.7589	416.05	249.2	377.6	331.1	31.4
77-34-11	41.4753	94.7394	424.28	245.5	376.4	329.8	29.3
77-34-12	41.4753	94.7200	395.94	250.2	372.4	328.1	20.5
77-34-13	41.4611	94.7197	390.14	248.8	369.2	325.6	25.9
77-34-14	41.4631	94.7392	395.63	249.3	371.4	327.2	27.5
77-34-16	41.4611	94.7780	401.12	250.2	374.0	329.1	29.5

STATION NO.	N. LATITUDE (DEGREES)	W. LONGITUDE (DEGREES)	ELEVATION (METERS)	OBSERVED GRAVITY (MGALS)	FREE AIR GRAVITY (MGALS)	BOUGUER GRAVITY (MGALS)	BOUGUER ANOMALY (MGALS)
77-34-17	41.4611	94.7972	428.24	245.2	377.3	329.4	29.8
77-34-18	41.4611	94.8158	409.04	250.6	376.8	331.1	31.4
77-34-19	41.4464	94.8156	408.13	249.2	375.1	329.5	29.8
77-34-20	41.4464	94.7972	414.53	246.1	374.0	327.6	28.0
77-34-24	41.4464	94.7197	416.36	240.1	368.6	322.0	22.3
77-34-25	41.4319	94.7197	410.87	237.9	364.6	318.7	19.0
77-34-30	41.4319	94.8156	382.83	252.6	370.8	327.9	28.3
77-34-31	41.4100	94.8056	417.58	240.2	369.0	322.3	22.7
77-34-34	41.4175	94.7583	423.67	236.0	366.8	319.4	19.7
77-34-35	41.4175	94.7392	429.46	232.8	365.3	317.3	17.6
77-34-36	41.4175	94.7194	407.52	235.1	360.8	315.3	15.6
77-38- 1	41.4917	95.1731	402.95	217.9	342.2	297.2	-2.6
77-38- 2	41.4917	95.1917	385.88	218.9	338.0	294.8	-5.0
77-38- 3	41.4917	95.2047	384.96	217.3	336.1	293.0	-6.8
77-38- 5	41.4917	95.2489	404.47	207.2	332.0	286.7	-13.1
77-38- 7	41.4769	95.2678	395.33	210.6	332.6	288.4	-11.4
77-38- 8	41.4769	95.2489	396.55	212.6	335.0	290.6	-9.2
77-38- 9	41.4847	95.2300	411.48	209.8	336.8	290.7	-9.1
77-38-10	41.4769	95.2106	391.67	218.3	339.2	295.4	-4.4
77-38-12	41.4769	95.1722	402.95	221.2	345.6	300.5	0.7
77-38-15	41.4628	95.2000	400.51	221.4	345.0	300.2	0.4
77-38-16	41.4628	95.2200	409.35	217.2	343.6	297.8	-2.0
77-38-17	41.4628	95.2486	411.18	213.2	340.1	294.1	-5.7
77-38-18	41.4700	95.2678	378.56	216.0	332.8	290.5	-9.3
77-38-19	41.4483	95.2675	391.97	218.0	338.9	295.1	-4.7
77-38-20	41.4483	95.2486	411.18	216.3	343.2	297.2	-2.6
77-38-21	41.4483	95.2200	411.79	219.7	346.8	300.7	0.9
77-38-29	41.4344	95.2486	384.35	224.7	343.3	300.3	0.5
77-38-30	41.4344	95.2675	400.20	219.5	343.0	298.2	-1.6
77-39- 1	41.4922	95.2872	372.16	209.5	324.3	282.7	-17.0
77-39- 2	41.4956	95.3058	354.79	209.4	318.9	279.2	-20.5
77-39- 6	41.4922	95.3817	394.72	190.6	312.4	268.3	-31.4
77-39- 7	41.4778	95.3817	387.71	197.4	317.1	273.7	-26.0
77-39- 8	41.4778	95.3631	354.18	207.1	316.4	276.8	-22.9
77-39-11	41.4778	95.3058	369.72	211.1	325.1	283.8	-15.9
77-39-12	41.4778	95.2872	382.22	211.0	328.9	286.1	-13.5
77-39-13	41.4631	95.2870	386.49	214.2	333.4	290.2	-9.5
77-39-14	41.4631	95.3156	377.34	212.1	328.5	286.3	-13.4
77-39-15	41.4614	95.3250	363.63	214.1	326.4	285.7	-14.0
77-39-16	41.4703	95.3433	344.12	214.0	320.2	281.7	-18.0
77-39-17	41.4631	95.3631	344.42	213.5	319.8	281.3	-18.4
77-39-20	41.4489	95.3631	345.64	216.9	323.5	284.9	-14.0
77-39-21	41.4489	95.3433	349.30	210.1	325.9	286.8	-12.9
77-39-22	41.4489	95.3250	385.88	212.7	331.8	288.6	-11.1
77-39-23	41.4489	95.3056	398.37	212.2	335.1	290.6	-9.1
77-39-24	41.4489	95.2864	396.24	214.7	336.9	292.6	-7.1
77-39-25	41.4342	95.2861	404.17	216.3	341.0	295.8	-3.9
77-39-26	41.4342	95.3053	397.46	215.9	338.6	294.1	-5.5
77-39-28	41.4342	95.3339	361.49	220.6	332.2	291.7	-7.9
77-39-29	41.4272	95.3631	373.69	222.3	337.7	295.9	-3.8
77-39-31	41.4197	95.3811	378.87	214.3	331.2	288.8	-10.9
77-39-35	41.4272	95.3053	391.36	218.7	339.5	295.7	-4.0
77-39-36	41.4197	95.2861	395.94	221.4	343.6	299.3	-0.4

STATION NO.	N. LATITUDE (DEGREES)	W. LONGITUDE (DEGREES)	ELEVATION (METERS)	OBSERVED GRAVITY (MGALS)	FREE AIR GRAVITY (MGALS)	BOUGUER GRAVITY (MGALS)	BOUGUER ANOMALY (MGALS)
77-40- 1	41.4925	95.4005	402.34	185.8	310.0	265.0	
77-40- 2	41.4925	95.4197	398.37	184.2	307.1	262.5	-34.9
77-40- 3	41.4925	95.4386	385.57	184.5	303.5	260.4	-37.4
77-40- 4	41.4925	95.4581	394.72	179.7	301.5	257.3	-39.5
77-40- 6	41.4925	95.4908	406.30	171.1	296.5	251.0	-42.6
77-40- 7	41.4780	95.4953	409.96	175.6	302.1	256.3	-48.9
77-40- 9	41.4780	95.4581	402.34	182.9	307.1	262.1	-43.6
77-40-10	41.4780	95.4386	383.13	189.0	308.0	265.2	-37.8
77-40-11	41.4780	95.4197	374.90	194.0	309.7	267.7	-34.7
77-40-12	41.4780	95.4005	394.72	192.4	314.3	270.1	-32.2
77-40-13	41.4636	95.4005	401.73	195.4	319.4	274.5	-29.8
77-40-15	41.4636	95.4386	363.63	198.4	310.6	269.9	-25.4
77-40-16	41.4636	95.4581	407.21	186.3	311.9	266.4	-30.0
77-40-18	41.4636	95.4953	409.96	180.8	307.3	261.5	-33.5
77-40-19	41.4494	95.4953	394.72	189.8	311.6	267.5	-38.4
77-40-21	41.4494	95.4581	388.01	195.0	314.8	271.4	-32.4
77-40-24	41.4494	95.4005	387.40	202.7	322.3	278.9	-28.5
77-40-25	41.4344	95.4005	406.91	202.3	327.8	282.3	-21.0
77-40-28	41.4344	95.4581	399.90	196.9	320.3	275.5	-17.6
77-40-29	41.4344	95.4767	391.67	196.9	317.8	274.0	-24.3
77-40-31	41.4197	95.4953	369.42	203.6	317.6	276.3	-25.9
77-40-32	41.4200	95.4767	390.45	201.3	321.8	278.1	-23.6
77-40-33	41.4200	95.4581	388.01	203.7	323.5	280.1	-21.8
77-40-34	41.4200	95.4347	358.45	212.3	322.9	282.8	-19.8
77-40-36	41.4200	95.4005	400.81	207.7	331.4	286.6	-17.1
77-41- 1	41.4928	95.5145	388.32	171.9	291.7	248.3	-13.3
77-41- 4	41.4928	95.5722	370.64	164.7	279.1	237.6	-52.9
77-41- 6	41.4928	95.6095	377.34	157.3	273.8	231.6	-63.5
77-41- 7	41.4780	95.6095	362.41	168.7	280.5	240.0	-69.6
77-41- 9	41.4780	95.5722	365.46	173.9	286.7	245.8	-61.2
77-41-11	41.4764	95.5239	373.00	181.2	296.3	254.6	-55.4
77-41-12	41.4786	95.5106	382.52	180.1	298.2	254.6	-46.6
77-41-13	41.4639	95.5145	371.55	187.6	302.2	260.7	-45.8
77-41-16	41.4639	95.5722	300.62	175.6	295.5	252.0	-40.5
77-41-17	41.4631	95.6008	335.20	183.4	286.8	249.3	-49.2
77-41-21	41.4494	95.5722	401.42	178.1	301.9	257.0	-51.9
77-41-25	41.4344	95.5050	404.78	191.7	316.6	271.4	-44.1
77-41-26	41.4344	95.5339	371.55	195.1	309.8	268.2	-29.8
77-41-32	41.4200	95.5917	401.73	185.9	309.9	264.9	-33.0
77-41-35	41.4200	95.5339	406.91	191.7	317.3	271.8	-36.3
77-41-36	41.4200	95.5147	388.01	198.3	318.0	274.6	-29.4
77-41-31	41.4200	95.6150	346.56	186.4	293.4	254.6	-26.6
77-42- 1	41.4919	95.6267	356.62	157.1	267.2	227.3	-37.5
77-42- 2	41.4919	95.6478	371.86	148.9	263.6	222.0	-72.6
77-42- 3	41.4919	95.6672	377.95	144.8	261.4	219.1	-77.8
77-42- 5	41.4917	95.7058	373.99	137.7	253.1	211.3	-80.7
77-42- 6	41.4917	95.7236	332.84	144.4	247.1	209.9	-88.5
77-42- 8	41.4772	95.7058	326.14	155.4	256.0	219.5	-90.0
77-42-10	41.4772	95.6675	362.71	156.4	268.3	227.7	-80.3
77-42-11	41.4706	95.5981	388.93	158.6	278.6	235.1	-72.1
77-42-12	41.4778	95.6250	347.17	167.2	274.3	235.5	-64.7
77-42-13	41.4631	95.6239	344.42	176.0	282.3	243.8	-64.4
77-42-15	41.4631	95.6675	385.88	160.3	279.4	236.2	-56.1
77-42-16	41.4628	95.6867	379.48	157.7	274.8	232.3	-63.6
77-42-17	41.4628	95.7058	349.30	160.2	268.0	228.9	-67.5
77-42-18	41.4628	95.7236	357.23	155.3	265.6	225.6	-70.9
77-42-19	41.4483	95.7203	322.48	172.6	272.1	236.0	-74.2
77-42-20	41.4486	95.7058	354.79	167.8	277.3	237.6	-63.8
77-42-22	41.4406	95.6678	392.89	165.5	286.8	242.8	-62.2
							-57.0

STATION NO.	N. LATITUDE (DEGREES)	W. LONGITUDE (DEGREES)	ELEVATION (METERS)	OBSERVED GRAVITY (MGALS)	FREE AIR GRAVITY (MGALS)	BOUGUER GRAVITY (MGALS)	BOUGUER ANOMALY (MGALS)
77-42-24	41.4489	95.6289	338.94	182.9	287.5	249.6	-50.2
77-42-25	41.4389	95.6289	329.79	181.1	282.9	246.0	-46.1
77-42-27	41.4342	95.6678	365.76	178.0	290.8	249.9	-49.9
77-42-28	41.4342	95.6867	378.56	172.3	289.1	246.7	-53.1
77-42-29	41.4336	95.7058	374.30	170.1	285.6	243.7	-56.1
77-42-30	41.4336	95.7244	331.62	176.8	279.1	242.0	-57.8
77-42-31	41.4200	95.7244	377.04	173.2	289.6	247.4	-52.4
77-42-32	41.4200	95.7058	386.79	173.5	292.9	249.6	-50.2
77-42-33	41.4200	95.6870	382.22	177.0	295.0	252.2	-47.6
77-42-34	41.4200	95.6678	329.18	182.9	284.5	247.7	-44.4
77-42-35	41.4231	95.6481	332.23	184.7	287.2	250.0	-42.0
78-30- 8	41.5611	94.3297	353.57	218.2	327.3	287.7	-19.7
78-31- 1	41.5725	94.3770	340.46	234.7	339.8	301.7	-7.1
78-31- 3	41.5858	94.4028	310.90	247.6	343.6	308.8	0.
78-31- 4	41.5770	94.4297	362.10	240.0	351.8	311.3	2.5
78-31- 5	41.5770	94.4450	373.99	240.1	355.5	313.6	4.9
78-31- 8	41.5675	94.4450	359.66	240.3	351.3	311.1	2.3
78-31-10	41.5622	94.4186	330.40	241.7	343.6	306.7	-2.1
78-31-11	41.5620	94.4053	368.20	231.5	345.1	303.9	-4.8
78-31-12	41.5617	94.3770	338.94	232.6	337.2	299.3	-9.5
78-31-13	41.5400	94.3770	363.93	222.4	334.7	294.0	-14.7
78-31-14	41.5550	94.3967	368.50	228.2	341.9	300.7	-8.0
78-31-15	41.5461	95.4225	373.38	229.1	344.3	302.5	-6.2
78-31-17	41.5478	94.4625	394.72	232.8	354.6	310.4	1.7
78-31-19	41.5333	94.4725	397.76	230.5	353.3	308.8	0.
78-31-20	41.5333	94.4544	395.02	227.7	349.6	305.4	-3.3
78-31-22	41.5403	94.4055	376.12	225.1	341.2	299.1	-9.6
78-31-24	41.5325	94.3667	370.94	217.3	331.8	290.3	-18.5
78-31-25	41.5183	94.3770	368.20	215.6	329.2	288.0	-20.7
78-31-26	41.5183	94.3969	383.74	216.3	334.8	291.8	-16.9
78-31-27	41.5183	94.4161	372.16	222.3	337.1	295.5	-13.3
78-31-28	41.5186	94.4353	393.19	221.2	342.5	298.5	-10.2
78-31-29	41.5186	94.4544	397.76	223.7	346.5	302.0	-6.8
78-31-30	41.5186	94.4725	406.30	225.2	350.6	305.2	-3.6
78-31-31	41.5044	94.4725	401.12	222.6	346.4	301.5	-7.3
78-31-32	41.5044	94.4544	394.72	220.8	342.6	298.4	-10.3
78-31-33	41.5042	94.4353	374.60	221.8	337.4	295.5	-13.2
78-31-34	41.5039	94.4161	374.60	218.2	333.8	291.9	-16.8
78-31-35	41.5039	94.3969	374.90	214.4	330.1	288.2	-20.6
78-31-36	41.5039	94.3772	376.12	209.8	325.9	283.8	-24.9
78-32- 1	41.5767	94.4919	397.76	243.0	365.7	321.2	13.8
78-32- 2	41.5767	94.5111	387.10	246.9	366.4	323.1	15.6
78-32- 3	41.5767	94.5308	407.21	246.8	372.5	326.9	19.5
78-32- 4	41.5767	94.5503	406.60	249.6	375.1	329.6	22.2
78-32- 5	41.5767	94.5689	384.35	256.9	375.5	332.5	25.0
78-32- 6	41.5836	94.5867	388.32	258.1	377.9	334.5	27.0
78-32- 7	41.5625	94.5864	412.70	250.5	377.8	331.6	24.2
78-32- 8	41.5625	94.5689	409.35	249.2	375.5	329.7	22.3
78-32- 9	41.5625	94.5503	398.07	249.1	371.9	327.4	20.0
78-32-10	41.5625	94.5305	418.49	241.8	370.9	324.1	16.7
78-32-11	41.5625	94.5111	375.51	248.1	363.9	321.9	14.5
78-32-12	41.5706	94.4919	363.02	248.2	360.2	319.6	12.2
78-32-14	41.5478	94.5111	409.35	237.4	363.8	318.0	10.5
78-32-15	41.5478	94.5305	384.35	246.3	364.9	321.9	14.5
78-32-16	41.5478	94.5497	412.70	243.4	370.8	324.6	17.2
78-32-17	41.5478	94.5689	408.74	246.4	372.5	326.8	19.3
78-32-19	41.5333	94.5864	421.84	243.4	373.6	326.4	18.9
78-32-20	41.5333	94.5686	405.99	244.7	370.0	324.6	17.1
78-32-21	41.5333	94.5497	413.61	240.4	368.0	321.7	14.3

STATION NO.	N. LATITUDE (DEGREES)	W. LONGITUDE (DEGREES)	ELEVATION (METERS)	OBSERVED GRAVITY (MGALS)	FREE AIR GRAVITY (MGALS)	BOUGUER GRAVITY (MGALS)	BOUGUER ANOMALY (MGALS)
78-32-22	41.5333	94.5303	392.20	241.3	362.4	318.5	11.0
78-32-23	41.5333	94.5106	387.71	238.8	358.4	315.1	7.6
78-32-24	41.5333	94.4919	403.25	231.4	355.9	318.8	3.3
78-32-25	41.5189	94.4919	393.19	230.3	351.6	307.6	0.2
78-32-26	41.5189	94.5106	388.32	235.0	354.9	311.4	4.0
78-32-27	41.5189	94.5303	416.36	232.5	361.0	314.4	7.0
78-32-28	41.5189	94.5497	400.20	240.2	363.7	318.9	11.4
78-32-29	41.5189	94.5686	384.05	247.2	365.7	322.7	15.3
78-32-30	41.5189	94.5897	387.10	248.9	368.3	325.0	17.6
78-32-35	41.5064	94.5106	376.73	233.9	350.1	308.0	0.5
78-32-36	41.5042	94.4919	377.95	230.0	346.6	304.3	-3.1
78-33- 1	41.5833	94.6056	413.31	253.4	381.0	334.7	27.3
78-33- 2	41.5833	94.6250	409.35	255.7	382.0	336.2	28.7
78-33- 3	41.5833	94.6444	407.82	257.1	382.9	337.3	29.9
78-33- 4	41.5869	94.6636	431.29	251.6	384.7	336.5	29.0
78-33- 5	41.5767	94.6820	438.00	250.8	386.0	337.0	29.5
78-33- 6	41.5767	94.7005	439.52	250.1	385.7	336.5	29.1
78-33- 7	41.5622	94.7005	441.96	250.9	387.3	337.8	30.4
78-33- 8	41.5622	94.6820	421.84	255.1	385.3	338.1	30.7
78-33- 9	41.5622	94.6633	445.62	249.2	386.8	336.9	29.5
78-33-10	41.5622	94.6442	439.52	249.3	384.9	335.7	28.3
78-33-11	41.5622	94.6250	418.49	252.1	381.2	334.4	27.0
78-33-12	41.5622	94.6053	427.94	248.5	380.5	332.7	25.2
78-33-13	41.5478	94.6053	399.90	252.9	376.3	331.6	24.1
78-33-14	41.5478	94.6250	409.35	253.1	370.0	333.6	26.2
78-33-15	41.5478	94.6442	422.45	252.3	382.0	335.4	27.9
78-33-16	41.5478	94.6631	451.71	247.4	386.8	336.2	28.8
78-33-17	41.5478	94.6825	438.91	251.5	387.0	337.9	30.4
78-33-18	41.5478	94.7005	407.82	259.6	385.5	339.8	32.4
78-33-19	41.5328	94.7003	421.84	255.8	385.9	338.8	31.3
78-33-20	41.5328	94.6825	422.76	254.5	384.9	337.6	30.2
78-33-21	41.5328	94.6631	450.19	246.6	385.6	335.2	27.8
78-33-22	41.5328	94.6442	437.08	247.5	382.4	333.5	26.1
78-33-23	41.5328	94.6247	414.53	250.1	378.0	331.6	24.2
78-33-24	41.5328	94.6050	416.36	247.1	375.6	329.0	21.5
78-33-25	41.5186	94.6047	414.53	244.8	372.8	326.4	18.9
78-33-26	41.5186	94.6245	413.00	248.0	375.5	329.3	21.8
78-33-27	41.5186	94.6439	426.72	248.2	379.9	332.1	24.7
78-33-28	41.5186	94.6628	437.39	248.6	383.6	334.6	27.2
78-33-29	41.5186	94.6822	429.46	251.6	384.1	336.1	28.6
78-33-30	41.5186	94.7003	450.50	248.5	387.5	337.1	29.6
78-33-31	41.5036	94.7003	434.34	250.6	384.6	336.0	28.6
78-33-32	41.5036	94.6822	426.11	250.3	381.8	334.2	26.7
78-33-33	41.5025	94.6528	421.54	247.8	377.8	330.7	23.2
78-33-36	41.5036	94.6047	427.33	242.9	374.8	327.0	19.6
78-34- 1	41.5770	94.7200	413.00	255.8	383.3	337.1	29.6
78-34- 2	41.5770	94.7392	418.80	253.9	383.1	336.3	28.8
78-34- 3	41.5770	94.7589	414.53	253.6	381.5	335.1	27.7
78-34- 4	41.5770	94.7780	392.89	258.0	379.2	335.3	27.8
78-34- 5	41.5733	94.7972	384.05	258.7	377.2	334.3	26.8
78-34- 9	41.5625	94.7780	400.43	256.2	382.2	336.5	29.0
78-34-10	41.5625	94.7589	431.60	252.6	385.8	337.5	30.0
78-34-12	41.5586	94.7200	400.43	250.4	376.4	330.8	23.3
78-34-13	41.5481	94.7200	419.71	257.3	386.8	339.9	32.4
78-34-14	41.5481	94.7389	415.44	258.0	386.2	339.8	32.3
78-34-15	41.5481	94.7586	419.10	256.1	385.4	338.5	31.0
78-34-16	41.5481	94.7778	429.77	254.1	386.7	338.6	31.2
78-34-17	41.5481	94.7970	440.13	250.7	386.5	337.3	29.8
78-34-21	41.5336	94.7775	423.06	257.3	387.8	340.5	33.0

STATION NO.	N. LATITUDE (DEGREES)	W. LONGITUDE (DEGREES)	ELEVATION (METERS)	OBSERVED GRAVITY (MGALS)	FREE AIR GRAVITY (MGALS)	BOUGUER GRAVITY (MGALS)	BOUGUER ANOMALY (MGALS)
78-34-22	41.5336	94.7586	430.68	254.9	387.8	339.6	32.2
78-34-23	41.5336	94.7389	404.78	261.5	386.4	341.1	33.6
78-34-24	41.5336	94.7200	424.28	256.5	387.5	340.0	32.5
78-34-25	41.5189	94.7200	437.69	253.0	388.1	339.1	31.7
78-34-26	41.5189	94.7389	427.03	256.6	388.4	340.6	33.2
78-34-27	41.5189	94.7583	398.68	263.5	386.5	341.9	34.4
78-34-28	41.5189	94.7767	408.43	261.0	387.0	341.3	33.8
78-34-30	41.5189	94.8014	427.64	255.4	387.4	339.6	32.1
78-34-33	41.5044	94.7775	386.49	265.3	384.6	341.4	33.9
78-34-34	41.5044	94.7583	393.19	263.3	384.7	340.7	33.2
78-34-35	41.5044	94.7389	405.00	259.5	384.5	339.2	31.7
78-34-36	41.5044	94.7200	414.53	256.7	384.6	338.2	30.7
78-35-1	41.5772	94.8350	428.24	244.8	376.9	329.0	21.5
78-35-2	41.5772	94.8539	416.66	245.3	373.9	327.3	19.8
78-35-3	41.5772	94.8736	405.99	244.9	370.2	324.8	17.3
78-35-5	41.5775	94.9119	401.73	242.2	366.1	321.2	13.7
78-35-6	41.5778	94.9264	415.44	237.4	365.6	319.1	11.6
78-35-7	41.5633	94.9270	404.47	243.1	367.9	322.6	15.1
78-35-9	41.5633	94.8880	395.63	249.2	371.2	327.0	19.5
78-35-10	41.5631	94.8739	395.55	249.3	373.7	328.6	21.1
78-35-11	41.5631	94.8539	395.72	246.4	378.1	330.4	22.9
78-35-12	41.5592	94.8353	389.84	256.7	377.1	333.4	25.9
78-35-13	41.5483	94.8353	393.19	258.0	379.3	335.4	27.9
78-35-14	41.5483	94.8645	435.26	246.0	380.4	331.7	24.2
78-35-15	41.5483	94.8739	401.73	252.2	376.2	331.2	23.7
78-35-21	41.5339	94.8933	430.38	246.3	379.1	331.0	23.5
78-35-22	41.5372	94.8739	426.72	248.1	379.8	332.1	24.6
78-35-25	41.5192	94.8353	381.61	264.8	382.6	339.9	32.4
78-35-27	41.5239	94.8739	420.62	252.5	382.3	335.3	27.8
78-36-1	41.5780	94.9456	431.90	232.1	365.4	317.1	8.9
78-36-2	41.5780	94.9653	430.07	229.8	362.5	314.4	6.2
78-36-3	41.5780	94.9842	420.02	229.9	359.6	312.6	4.3
78-36-4	41.5780	95.0033	428.24	224.2	356.4	308.5	0.2
78-36-5	41.5780	95.0228	422.45	222.4	352.7	305.5	-2.8
78-36-6	41.5780	95.0408	394.41	226.4	348.1	304.0	-4.2
78-36-7	41.5564	95.0411	427.64	224.2	356.2	308.3	0.1
78-36-8	41.5564	95.0233	401.12	232.6	356.4	311.5	3.3
78-36-9	41.5564	95.0039	434.95	228.0	362.2	313.5	5.3
78-36-10	41.5564	94.9797	411.18	237.1	364.0	318.0	9.8
78-36-11	41.5564	94.9658	413.92	238.0	365.7	319.4	11.2
78-36-12	41.5564	94.9461	411.79	241.0	368.1	322.0	13.8
78-36-13	41.5456	94.9461	390.75	248.1	368.7	325.0	16.8
78-36-14	41.5456	94.9655	397.46	244.3	367.0	322.5	14.3
78-36-15	41.5456	94.9850	382.52	245.1	363.2	320.4	12.2
78-36-16	41.5456	95.0039	416.05	234.8	363.2	316.6	0.4
78-36-17	41.5495	95.0233	421.84	230.2	360.4	313.2	5.0
78-36-18	41.5495	95.0411	404.78	231.0	355.9	310.7	2.4
78-36-21	41.5347	95.0042	397.76	241.9	364.7	320.2	11.9
78-36-22	41.5347	94.9853	401.12	243.8	367.6	322.7	14.5
78-36-24	41.5269	94.9467	370.33	255.9	370.2	328.8	20.5
78-36-26	41.5125	94.9564	376.73	255.5	371.8	329.6	21.4
78-36-28	41.5203	95.0047	406.30	243.1	368.5	323.0	14.8
78-36-29	41.5203	95.0236	375.21	247.6	363.4	321.4	13.2
78-36-30	41.5203	95.0408	407.52	238.1	363.8	318.3	10.0
78-36-33	41.5125	95.0044	400.81	245.6	369.3	324.5	16.3
78-36-34	41.5125	94.9856	410.66	245.4	373.9	327.3	19.1

STATION NO.	N. LATITUDE (DEGREES)	W. LONGITUDE (DEGREES)	ELEVATION (METERS)	OBSERVED GRAVITY (MGALS)	FREE AIR GRAVITY (MGALS)	BOUGUER GRAVITY (MGALS)	BOUGUER ANOMALY (MGALS)
78-37- 1	41.5786	95.0614	388.39	225.2	342.6	308.1	-7.5
78-37- 2	41.5786	95.0806	379.48	221.8	338.9	296.5	-11.1
78-37- 3	41.5786	95.1000	388.09	219.2	336.5	294.0	-13.6
78-37- 4	41.5786	95.1194	396.85	213.1	335.6	291.2	-16.4
78-37- 5	41.5786	95.1389	392.28	210.5	331.6	287.7	-19.9
78-37- 9	41.5639	95.1194	386.79	219.3	338.7	295.4	-12.2
78-37-10	41.5639	95.0947	381.00	224.0	341.6	298.9	-8.7
78-37-11	41.5639	95.0858	406.91	219.8	345.4	299.9	-7.7
78-37-12	41.5639	95.0614	415.44	221.7	349.9	303.4	-4.2
78-37-13	41.5495	95.0614	423.06	223.5	354.1	306.7	-0.9
78-37-14	41.5495	95.0806	389.54	228.2	348.4	304.8	-2.8
78-37-15	41.5495	95.0947	397.16	224.6	347.1	302.7	-4.9
78-37-16	41.5495	95.1194	367.28	226.7	340.1	299.0	-8.6
78-37-17	41.5495	95.1389	404.47	215.8	340.6	295.4	-12.2
78-37-18	41.5495	95.1555	415.14	210.7	338.8	292.4	-15.2
78-37-20	41.5347	95.1389	386.49	223.9	343.2	300.0	-7.6
78-37-23	41.5347	95.0806	417.27	226.0	354.7	308.1	0.5
78-37-24	41.5347	95.0614	401.73	232.1	356.0	311.1	3.5
78-37-25	41.5206	95.0614	402.03	235.7	359.7	314.8	7.2
78-37-26	41.5206	95.0806	384.96	236.6	355.4	312.3	4.8
78-37-27	41.5206	95.1000	407.52	229.2	354.9	309.3	1.7
78-37-28	41.5206	95.1194	391.36	229.4	350.2	306.4	-1.2
78-37-29	41.5206	95.1389	377.04	229.2	345.5	303.4	-4.2
78-37-30	41.5206	95.1555	401.42	221.6	345.4	300.5	-7.1
78-37-31	41.5061	95.1555	377.04	230.0	346.3	304.1	-3.5
78-37-32	41.5061	95.1389	368.50	234.6	348.3	307.1	-0.5
78-37-33	41.5061	95.1194	392.89	231.9	353.1	309.2	1.6
78-37-34	41.5061	95.1000	391.06	235.2	355.8	312.1	4.5
78-37-35	41.5061	95.0806	388.01	238.5	358.2	314.8	7.2
78-38- 1	41.5792	95.1750	417.27	199.8	328.6	281.9	-25.7
78-38- 2	41.5792	95.1942	426.72	194.3	326.0	278.2	-29.4
78-38- 3	41.5792	95.2133	408.13	194.8	320.8	275.1	-32.5
78-38- 4	41.5792	95.2328	380.39	197.1	314.5	271.9	-35.8
78-38- 5	41.5792	95.2519	367.89	196.1	309.6	268.5	-39.2
78-38- 6	41.5792	95.2697	368.50	192.0	305.8	264.5	-43.1
78-38- 7	41.5647	95.2664	374.90	197.2	312.9	271.0	-36.7
78-38- 8	41.5647	95.2522	381.00	198.5	316.1	273.5	-34.2
78-38- 9	41.5647	95.2330	384.96	201.2	320.0	277.0	-30.7
78-38-10	41.5647	95.2133	391.06	203.4	324.0	280.3	-27.4
78-38-12	41.5647	95.1747	422.45	202.8	333.2	286.0	-21.7
78-38-13	41.5503	95.2247	417.27	207.9	336.6	290.0	-17.7
78-38-14	41.5503	95.1942	402.03	208.4	332.5	287.5	-20.2
78-38-15	41.5503	95.2133	402.03	205.2	329.3	284.3	-23.4
78-38-16	41.5503	95.2330	395.33	203.6	325.6	281.4	-26.3
78-38-17	41.5503	95.2517	384.35	202.7	321.3	278.3	-29.3
78-38-19	41.5356	95.2700	374.90	206.2	321.9	279.9	-27.7
78-38-20	41.5356	95.2514	401.73	203.3	327.3	282.4	-25.3
78-38-21	41.5356	95.2330	410.87	204.4	331.2	285.2	-22.4
78-38-22	41.5203	95.2136	414.22	208.6	336.4	290.1	-17.6
78-38-23	41.5356	95.1939	393.80	213.8	335.3	291.2	-16.4
78-38-24	41.5356	95.1747	405.69	214.2	339.3	294.0	-13.7
78-38-25	41.5211	95.1747	405.69	217.7	342.9	297.5	-10.1
78-38-26	41.5211	95.1936	406.30	214.8	340.2	294.7	-12.9
78-38-28	41.5203	95.2231	412.40	207.6	334.8	288.7	-19.0
78-38-29	41.5211	95.2511	413.92	204.7	332.4	286.1	-21.6
78-38-32	41.5067	95.2508	389.54	214.1	334.3	290.7	-16.9
78-38-33	41.5067	95.2328	399.29	214.6	337.8	293.1	-14.6
78-38-34	41.5067	95.2136	402.95	216.3	340.6	295.5	-12.1
78-38-35	41.5067	95.1936	391.06	221.9	342.6	298.8	-8.9

STATION NO.	N. LATITUDE (DEGREES)	W. LONGITUDE (DEGREES)	ELEVATION (METERS)	OBSERVED GRAVITY (MGALS)	FREE AIR GRAVITY (MGALS)	BOUGUER GRAVITY (MGALS)	BOUGUER ANOMALY (MGALS)
78-38-36	41.5067	95.1750	400.81	222.5	346.2	301.3	-6.3
78-39- 1	41.5794	95.2944	375.21	186.0	301.8	259.8	-48.6
78-39- 3	41.5794	95.3228	356.01	184.1	293.9	254.1	-54.2
78-39- 4	41.5794	95.3419	362.71	178.6	290.5	249.9	-58.4
78-39- 5	41.5794	95.3664	396.24	166.8	289.1	244.8	-63.6
78-39- 6	41.5794	95.3833	400.51	160.1	283.7	238.9	-69.5
78-39- 7	41.5647	95.3833	399.59	170.7	294.0	249.3	-59.0
78-39- 9	41.5647	95.3472	358.14	185.8	296.3	256.2	-52.1
78-39-10	41.5686	95.3228	367.28	186.9	300.2	259.1	-49.2
78-39-11	41.5686	95.3086	403.25	181.3	305.8	260.7	-47.7
78-39-12	41.5589	95.2886	360.27	199.2	310.4	270.1	-38.3
78-39-14	41.5461	95.3083	365.76	198.5	311.4	270.5	-37.9
78-39-15	41.5578	95.3228	358.14	192.8	303.3	263.3	-45.1
78-39-16	41.5578	95.3356	352.65	191.6	300.4	261.0	-47.4
78-39-17	41.5500	95.3569	389.54	183.1	303.3	259.7	-48.6
78-39-18	41.5536	95.3833	408.43	173.3	299.4	253.7	-54.7
78-39-19	41.5283	95.3831	390.75	186.2	306.8	263.0	-45.3
78-39-20	41.5433	95.3569	381.00	186.9	304.5	261.9	-46.5
78-39-23	41.5319	95.3083	358.14	235.7	346.2	306.1	-2.2
78-39-24	41.5356	95.2892	360.58	206.8	318.0	277.7	-30.7
78-39-25	41.5211	95.2870	377.34	208.3	324.7	282.5	-25.8
78-39-27	41.5211	95.3275	381.61	201.2	319.0	276.3	-32.0
78-39-28	41.5211	95.3375	354.18	205.2	314.5	274.9	-33.5
78-39-29	41.5211	95.3567	358.75	201.9	312.6	272.4	-35.9
78-39-30	41.5211	95.3831	383.44	190.8	309.2	266.3	-42.1
78-39-31	41.5067	95.3808	390.14	195.1	315.5	271.8	-36.5
78-39-32	41.5108	95.3558	354.18	206.3	315.6	276.0	-32.4
78-39-33	41.5108	95.3372	350.52	209.7	317.8	278.6	-29.7
78-39-35	41.5067	95.3075	355.70	214.1	323.9	284.1	-24.2
78-39-36	41.5067	95.2892	300.39	211.7	329.0	286.5	-21.9
78-40- 1	41.5861	95.4030	392.89	159.8	281.0	237.1	-70.5
78-40- 2	41.5861	95.4225	404.47	148.1	272.9	227.6	-80.0
78-40- 4	41.5861	95.4606	418.19	134.8	263.9	217.1	-90.5
78-40- 5	41.5861	95.4803	389.23	137.9	258.0	214.5	-93.1
78-40- 6	41.5861	95.4978	401.73	132.9	256.8	211.9	-95.7
78-40- 8	41.5645	95.4794	417.27	143.1	271.8	225.2	-82.5
78-40- 9	41.5645	95.4511	412.70	152.1	279.4	233.3	-74.4
78-40-12	41.5645	95.4030	383.13	170.1	280.3	245.5	-62.2
78-40-13	41.5497	95.4025	400.20	173.1	296.6	251.8	-55.8
78-40-15	41.5497	95.4317	398.98	167.9	291.0	246.4	-61.3
78-40-16	41.5497	95.4511	411.48	160.8	287.8	241.8	-65.8
78-40-17	41.5497	95.4794	390.45	158.1	278.6	234.9	-72.7
78-40-20	41.5350	95.4794	388.93	165.8	285.8	242.3	-65.3
78-40-21	41.5350	95.4505	406.60	169.0	294.5	249.0	-58.7
78-40-22	41.5350	95.4319	397.76	174.5	297.3	252.8	-54.8
78-40-24	41.5350	95.4028	383.13	182.2	300.4	257.6	-50.1
78-40-25	41.5206	95.4022	390.14	186.2	306.6	263.0	-44.6
78-40-27	41.5197	95.4294	373.00	186.4	301.5	259.8	-47.9
78-40-29	41.5206	95.4794	389.54	173.1	293.3	249.7	-57.9
78-40-32	41.5064	95.4792	411.48	174.4	301.4	255.4	-52.3
78-40-33	41.5064	95.4603	406.30	179.3	304.7	259.2	-48.4
78-40-34	41.5004	95.4505	403.86	181.7	306.4	261.2	-46.4
78-40-35	41.5133	95.4220	398.68	184.4	307.4	262.8	-44.8
78-40-36	41.5064	95.4022	412.70	186.3	313.7	267.5	-40.1

STATION NO.	N. LATITUDE (DEGREES)	W. LONGITUDE (DEGREES)	ELEVATION (METERS)	OBSERVED GRAVITY (MGALS)	FREE AIR GRAVITY (MGALS)	BOUGUER GRAVITY (MGALS)	BOUGUER ANOMALY (MGALS)
78-41- 1	41.5800	95.5161	408.74	131.1	257.3	211.5	
78-41- 2	41.5800	95.5350	383.13	135.1	253.3	211.5	-96.2
78-41- 5	41.5794	95.5933	374.60	135.6	251.2	209.3	-97.2
78-41- 6	41.5794	95.6033	394.11	131.3	253.0	208.9	-98.4
78-41- 8	41.5647	95.5933	383.44	134.7	253.0	210.2	-98.9
78-41- 9	41.5647	95.5728	351.13	141.9	250.2	210.2	-97.6
78-41-12	41.5656	95.5161	389.23	138.9	259.0	215.5	-96.8
78-41-13	41.5511	95.5161	408.43	141.0	267.1	221.4	-92.2
78-41-15	41.5508	95.5544	390.45	137.2	257.7	214.0	-86.3
78-41-16	41.5508	95.5789	352.35	143.5	252.2	212.8	-93.7
78-41-17	41.5508	95.5933	388.01	135.2	255.0	211.6	-94.9
78-41-18	41.5506	95.6206	385.27	134.9	253.0	211.6	-96.1
78-41-19	41.5356	95.6206	401.73	134.0	258.0	210.7	-97.1
78-41-20	41.5358	95.5930	390.14	138.6	259.0	213.0	-94.7
78-41-21	41.5361	95.5731	348.69	149.4	257.0	215.4	-92.3
78-41-23	41.5361	95.5256	375.21	153.2	269.0	218.0	-89.7
78-41-25	41.5217	95.5155	388.32	162.6	282.4	227.0	-80.7
78-41-26	41.5217	95.5256	384.66	160.4	279.1	239.0	-68.7
78-41-29	41.5217	95.5928	377.95	147.7	264.4	236.1	-71.7
78-41-30	41.5214	95.6161	399.90	140.2	263.6	222.1	-85.6
78-41-31	41.5069	95.6106	381.00	154.5	272.1	218.9	-88.8
78-41-33	41.5139	95.5789	346.56	162.0	268.9	229.5	-78.3
78-41-36	41.5072	95.5155	380.70	172.5	290.0	230.1	-77.6
78-42-13	41.5506	95.6300	356.62	140.5	250.5	247.4	-60.3
78-42-23	41.5358	95.6536	383.44	143.1	261.5	210.6	-97.1
78-42-26	41.5214	95.6394	401.42	136.5	260.3	218.6	-89.1
79-30-16	41.6425	94.3514	355.09	237.6	347.2	215.4	-92.3
79-31- 1	41.6831	94.4172	349.30	263.7	371.5	307.4	0.
79-31- 2	41.6831	94.4364	368.81	263.9	371.5	332.4	16.1
79-31- 3	41.6828	94.4558	330.71	274.3	377.7	336.4	20.1
79-31- 4	41.6828	94.4753	349.30	272.0	376.3	339.3	23.0
79-31- 5	41.6753	94.4842	372.77	268.1	379.8	340.7	24.4
79-31- 8	41.6681	94.4842	352.04	272.2	383.1	341.4	25.1
79-31- 9	41.6606	94.4753	350.52	270.1	380.8	341.5	25.1
79-31-10	41.6597	94.4558	339.85	270.9	378.2	339.0	22.7
79-31-12	41.6533	94.4103	366.37	256.7	375.7	337.7	21.4
79-31-15	41.6464	94.4558	320.04	274.0	369.7	328.7	12.4
79-31-16	41.6464	94.4842	356.31	270.1	372.7	336.9	20.6
79-31-17	41.6464	94.5039	371.86	267.3	380.0	340.2	23.9
79-31-19	41.6392	94.5189	337.41	276.1	382.0	340.5	24.1
79-31-20	41.6294	94.4950	356.31	266.2	380.2	342.5	26.2
79-31-21	41.6319	94.4753	364.54	264.3	376.1	336.3	20.0
79-31-22	41.6322	94.4556	362.71	262.0	376.8	336.0	19.7
79-31-23	41.6325	94.4364	334.06	265.2	374.0	333.4	17.1
79-31-24	41.6328	94.4167	313.03	265.8	368.3	330.9	14.6
79-31-25	41.6186	94.4167	334.06	258.6	362.4	327.3	11.0
79-31-26	41.6186	94.4364	352.04	258.7	361.7	324.3	8.0
79-31-27	41.6183	94.4556	363.93	259.0	367.4	328.0	11.7
79-31-28	41.6181	94.4750	370.94	260.7	371.3	330.6	14.3
79-31-29	41.6178	94.4944	379.78	261.9	375.2	333.7	17.4
79-31-30	41.6178	94.5139	378.26	264.7	379.1	336.6	20.3
79-31-31	41.6028	94.5139	366.68	265.7	381.5	339.2	22.8
79-31-32	41.6028	94.4928	344.42	266.8	378.8	337.8	21.5
79-31-33	41.6031	94.4750	334.90	266.4	373.1	334.6	18.3
79-31-34	41.6047	94.4505	325.53	264.6	369.8	332.3	16.0
79-31-35	41.6036	94.4364	339.24	258.6	365.1	328.7	12.3
79-31-36	41.6039	94.4167	317.30	259.8	363.3	325.4	9.1
					357.7	322.2	5.9

STATION NO.	N. LATITUDE (DEGREES)	W. LONGITUDE (DEGREES)	ELEVATION (METERS)	OBSERVED GRAVITY (MGALS)	FREE AIR GRAVITY (MGALS)	BOUGUER GRAVITY (MGALS)	BOUGUER ANOMALY (MGALS)
79-32- 1	41.6714	94.5333	361.19	268.7	380.2	339.8	23.5
79-32- 2	41.6745	94.5525	353.57	269.6	378.7	339.1	22.9
79-32- 3	41.6758	94.5744	344.42	276.2	382.5	343.9	27.7
79-32- 4	41.6736	94.5917	352.04	274.8	383.4	344.0	27.7
79-32- 5	41.6733	94.6192	362.71	269.4	381.3	340.8	24.5
79-32-10	41.6603	94.5722	398.98	264.6	387.8	343.1	26.8
79-32-12	41.6608	94.5286	377.34	267.8	384.3	342.1	25.8
79-32-13	41.6461	94.5331	372.47	269.3	384.2	342.5	26.3
79-32-14	41.6461	94.5478	375.51	269.5	385.4	343.4	27.1
79-32-15	41.6461	94.5625	388.62	267.5	387.4	344.0	27.7
79-32-16	41.6533	94.5917	395.63	266.1	388.2	343.9	27.6
79-32-17	41.6461	94.6106	409.96	262.4	388.9	343.0	26.7
79-32-19	41.6314	94.6189	390.45	267.9	388.4	344.7	28.4
79-32-21	41.6314	94.5811	370.33	272.7	387.0	345.5	29.3
79-32-22	41.6328	94.5625	347.47	277.3	384.5	345.6	29.4
79-32-23	41.6270	94.5519	346.25	276.2	383.0	344.3	28.0
79-32-24	41.6258	94.5364	342.90	275.4	381.2	342.9	26.6
79-32-25	41.6100	94.5297	371.86	267.5	382.3	340.7	24.4
79-32-26	41.6147	94.5564	353.57	274.6	383.7	344.1	27.9
79-32-28	41.6189	94.5883	370.33	273.3	387.5	346.1	29.8
79-32-29	41.6172	94.6103	374.90	272.2	387.9	346.0	29.7
79-32-31	41.6025	94.6250	432.82	259.5	393.1	344.7	28.4
79-32-32	41.6025	94.6103	418.49	262.2	391.4	344.6	28.3
79-32-36	41.5981	94.5331	390.14	259.4	379.8	336.1	19.9
79-33- 1	41.6736	94.6478	418.80	255.2	384.5	337.6	21.4
79-33- 2	41.6747	94.6672	420.62	254.1	383.9	336.9	20.6
79-33- 3	41.6747	94.6867	427.94	248.6	380.7	332.8	16.6
79-33- 4	41.6747	94.7061	422.15	248.9	379.2	331.9	15.7
79-33- 5	41.6747	94.7253	427.04	246.6	378.6	330.8	14.5
79-33- 6	41.6747	94.7433	423.67	245.4	376.2	328.8	12.5
79-33- 7	41.6603	94.7433	431.60	246.4	379.6	331.3	15.1
79-33- 8	41.6603	94.7253	430.68	249.2	382.1	334.0	17.7
79-33- 9	41.6603	94.7061	415.44	253.6	381.8	335.4	19.1
79-33-10	41.6603	94.6867	427.03	252.1	383.9	336.1	19.9
79-33-11	41.6603	94.6669	433.43	252.5	386.3	337.8	21.5
79-33-12	41.6603	94.6478	388.01	263.6	383.3	339.9	23.7
79-33-14	41.6456	94.6669	411.48	260.3	387.3	341.3	25.0
79-33-15	41.6456	94.6864	426.72	255.4	387.1	339.4	23.2
79-33-16	41.6456	94.7058	403.56	258.2	382.7	337.6	21.4
79-33-17	41.6456	94.7250	412.70	254.3	381.6	335.5	19.2
79-33-18	41.6456	94.7433	427.03	249.7	381.5	333.7	17.5
79-33-19	41.6311	94.7428	422.76	253.7	384.1	336.8	20.6
79-33-20	41.6311	94.7250	417.27	257.1	385.9	339.2	23.0
79-33-21	41.6311	94.7058	418.49	258.1	387.3	340.5	24.2
79-33-22	41.6311	94.6864	423.06	259.0	389.6	342.3	26.0
79-33-24	41.6311	94.6528	432.82	257.9	391.4	343.0	26.8
79-33-25	41.6172	94.6525	416.97	263.2	391.8	345.2	29.0
79-33-26	41.6172	94.6619	437.69	258.1	393.2	344.2	28.0
79-33-27	41.6172	94.6864	433.12	258.1	391.7	343.3	27.0
79-33-28	41.6172	94.7058	435.56	256.0	390.4	341.6	25.4
79-33-29	41.6172	94.7250	416.36	259.0	387.5	340.9	24.6
79-33-30	41.6172	94.7428	405.30	260.4	385.5	340.2	24.0
79-33-31	41.6025	94.7439	423.67	258.0	388.7	341.3	25.1
79-33-32	41.6025	94.7197	433.43	258.2	392.0	343.5	27.2
79-33-33	41.6025	94.7005	447.75	255.5	393.0	343.5	27.3
79-33-34	41.6025	94.6828	428.55	260.1	392.4	344.4	28.2
79-33-35	41.6025	94.6619	408.74	265.1	391.3	345.6	29.3
79-33-36	41.6025	94.6447	429.46	260.7	393.2	345.2	29.0

STATION NO.	N. LATITUDE (DEGREES)	W. LONGITUDE (DEGREES)	ELEVATION (METERS)	OBSERVED GRAVITY (MGALS)	FREE AIR GRAVITY (MGALS)	BOUGUER GRAVITY (MGALS)	BOUGUER ANOMALY (MGALS)
79-34- 1	41.6747	94.7633	438.91	241.4	376.8	327.7	11.5
79-34- 2	41.6747	94.7828	434.65	239.8	373.9	325.3	9.8
79-34- 3	41.6747	94.8025	482.34	245.4	369.6	324.6	8.3
79-34- 4	41.6747	94.8117	488.81	243.6	367.3	322.4	6.2
79-34- 5	41.6747	94.8405	482.34	236.4	368.6	315.6	-8.7
79-34- 6	41.6747	94.8595	438.99	229.2	362.2	313.9	-2.3
79-34- 8	41.6636	94.8356	483.86	241.6	366.3	321.1	4.8
79-34-10	41.6564	94.8022	418.26	246.4	373.8	327.2	18.9
79-34-11	41.6683	94.7825	432.21	243.1	376.5	328.2	11.9
79-34-12	41.6683	94.7633	447.45	241.6	379.7	329.6	13.4
79-34-13	41.6458	94.7633	429.77	247.8	388.4	332.4	16.1
79-34-14	41.6458	94.7825	419.41	248.6	378.1	331.2	14.9
79-34-15	41.6458	94.8022	415.44	246.3	374.5	328.8	11.8
79-34-17	41.6458	94.8483	482.34	245.8	369.2	324.2	7.9
79-34-18	41.6458	94.8595	391.36	244.7	365.4	321.7	5.4
79-34-20	41.6386	94.8483	416.97	242.6	371.3	324.7	8.4
79-34-21	41.6314	94.8211	399.59	258.6	373.9	329.2	13.8
79-34-22	41.6314	94.8022	414.22	258.5	378.3	332.8	15.7
79-34-23	41.6314	94.7825	437.88	246.9	381.7	332.9	16.6
79-34-24	41.6314	94.7631	446.23	246.4	384.1	334.2	17.9
79-34-25	41.6169	94.7631	413.31	256.9	384.4	338.2	22.8
79-34-26	41.6169	94.7822	422.15	252.8	383.8	335.8	19.6
79-34-27	41.6169	94.8019	417.88	258.8	379.7	333.8	16.7
79-34-28	41.6169	94.8288	482.83	253.2	377.3	332.3	16.8
79-34-29	41.6169	94.8353	488.43	249.8	375.8	338.1	13.9
79-34-30	41.6239	94.8595	381.92	258.7	368.5	325.8	9.6
79-34-31	41.6825	94.8581	485.99	258.8	375.3	329.9	13.7
79-34-32	41.6825	94.8353	438.99	247.3	388.3	332.1	15.9
79-34-34	41.6825	94.7978	483.56	258.5	383.1	337.9	21.7
79-34-35	41.6825	94.7822	396.24	268.9	383.2	338.8	22.6
79-34-36	41.6825	94.7631	414.83	259.8	387.8	348.6	24.4
79-35- 1	41.6742	94.8789	485.38	238.4	355.5	318.1	-6.1
79-35- 2	41.6675	94.8986	395.63	231.7	353.7	389.5	-6.8
79-35- 3	41.6675	94.9178	395.63	227.6	349.7	385.5	-18.8
79-35- 4	41.6675	94.9378	441.66	214.9	351.2	381.8	-14.4
79-35- 5	41.6653	94.9564	452.82	289.3	348.8	298.2	-18.1
79-35- 6	41.6758	94.9761	425.58	218.5	341.8	294.2	-22.8
79-35- 7	41.6589	94.9761	448.97	289.3	347.8	297.6	-18.6
79-35- 9	41.6686	94.9378	438.99	219.2	352.2	384.8	-12.3
79-35-12	41.6675	94.8789	417.88	238.8	359.8	312.2	-4.1
79-35-13	41.6458	94.8789	418.49	235.1	364.2	317.4	1.2
79-35-14	41.6458	94.8986	392.58	237.1	358.2	314.3	-1.9
79-35-15	41.6458	94.9178	413.31	229.5	357.8	318.8	-5.4
79-35-16	41.6458	94.9378	399.59	229.8	352.3	387.6	-8.6
79-35-18	41.6458	94.9761	427.64	216.8	348.8	388.9	-15.3
79-35-19	41.6317	94.9761	333.43	219.8	352.8	384.3	-12.8
79-35-20	41.6317	94.9564	428.24	223.5	355.6	387.7	-8.5
79-35-21	41.6317	94.9378	424.28	228.1	359.1	311.6	-4.6
79-35-23	41.6317	94.8986	391.97	248.6	361.6	317.7	1.5
79-35-25	41.6169	94.8739	428.32	241.5	371.2	324.2	7.9
79-35-26	41.6169	94.8986	378.26	248.2	364.9	322.6	6.3
79-35-27	41.6169	94.9178	424.28	235.5	366.4	319.8	2.7
79-35-28	41.6169	94.9378	439.22	229.8	364.5	315.4	-8.9
79-35-29	41.6169	94.9564	412.89	231.5	358.7	312.6	-3.7
79-35-30	41.6169	94.9761	434.34	223.3	357.3	388.8	-7.5
79-35-31	41.6831	94.9761	482.83	234.7	358.7	313.7	-2.5
79-35-32	41.6831	94.9564	438.91	238.4	365.8	316.7	8.4
79-35-34	41.6831	94.9178	417.88	248.8	369.7	323.8	6.7
79-35-35	41.6811	94.8988	376.73	253.5	369.7	327.6	11.3

STATION NO.	N. LATITUDE (DEGREES)	W. LONGITUDE (DEGREES)	ELEVATION (METERS)	OBSERVED GRAVITY (MGALS)	FREE AIR GRAVITY (MGALS)	BOUGUER GRAVITY (MGALS)	BOUGUER ANOMALY (MGALS)
79-36- 1	41.6747	94.9950	401.73	214.1	338.1	293.1	-23.1
79-36- 2	41.6747	95.0147	442.88	202.6	339.3	289.8	-26.5
79-36- 3	41.6747	95.0339	435.56	202.1	336.5	287.8	-28.5
79-36- 4	41.6747	95.0528	410.26	204.9	331.5	285.7	-30.6
79-36- 5	41.6747	95.0725	429.16	198.1	330.5	282.5	-33.8
79-36- 6	41.6747	95.0928	429.77	193.8	326.5	278.4	-37.9
79-36- 7	41.6603	95.0928	434.95	196.2	330.4	281.8	-34.5
79-36- 8	41.6603	95.0725	423.67	202.0	332.8	285.4	-30.9
79-36- 9	41.6603	95.0533	406.30	208.6	334.0	288.5	-27.7
79-36-10	41.6603	95.0339	405.38	210.9	336.0	290.6	-25.6
79-36-11	41.6603	95.0147	410.26	212.3	338.9	293.0	-23.2
79-36-12	41.6603	94.9950	420.62	212.2	342.0	295.0	-21.3
79-36-13	41.6458	94.9950	432.82	212.7	346.2	297.8	-18.4
79-36-14	41.6458	95.0147	404.78	216.4	341.3	296.1	-20.2
79-36-15	41.6458	95.0339	398.07	215.5	338.3	293.8	-22.5
79-36-16	41.6458	95.0533	407.52	210.9	336.7	291.1	-25.1
79-36-17	41.6458	95.0725	415.44	206.9	335.1	288.6	-27.6
79-36-18	41.6458	95.0928	409.65	204.8	331.2	285.4	-30.9
79-36-19	41.6314	95.0922	408.43	208.5	334.5	288.8	-27.5
79-36-21	41.6311	95.0542	392.28	217.0	338.1	294.2	-22.1
79-36-22	41.6311	95.0339	413.92	215.0	342.7	296.4	-19.8
79-36-23	41.6311	95.0147	452.63	209.5	349.1	298.5	-17.7
79-36-24	41.6311	94.9950	423.06	219.1	349.6	302.3	-13.9
79-36-25	41.6172	94.9950	422.15	222.9	353.2	306.0	-10.3
79-36-27	41.6172	95.0339	417.88	217.9	346.8	300.1	-16.2
79-36-28	41.6139	95.0533	444.40	210.3	347.4	297.7	-10.6
79-36-29	41.6128	95.0717	408.43	215.7	341.7	296.0	-20.2
79-36-30	41.6206	95.0922	403.56	212.3	336.9	291.7	-24.5
79-36-31	41.6019	95.0922	401.42	217.1	341.0	296.1	-20.1
79-36-32	41.6019	95.0717	407.52	218.7	344.5	298.9	-17.3
79-36-33	41.6019	95.0533	427.64	217.3	349.2	301.4	-14.8
79-36-34	41.6028	95.0339	397.76	226.6	349.4	304.9	-11.4
79-36-35	41.5925	95.0225	401.12	230.3	354.1	309.2	-7.1
79-36-36	41.6028	94.9950	402.03	231.8	355.8	310.9	-5.4
79-37- 7	41.6628	95.2097	414.53	169.9	297.8	251.4	-64.8
79-37-14	41.6458	95.1322	387.71	202.0	321.7	278.3	-38.0
79-37-16	41.6458	95.1708	419.10	186.5	315.9	269.0	-47.3
79-37-18	41.6458	95.2097	377.04	185.2	301.6	259.4	-56.9
79-37-25	41.6167	95.1125	400.51	210.9	334.5	289.7	-26.5
79-38- 1	41.6819	95.2300	384.05	161.3	279.8	236.9	-79.4
79-38- 2	41.6819	95.2486	417.27	144.3	273.1	226.4	-89.8
79-38- 3	41.6819	95.2683	383.13	146.0	264.2	221.4	-94.9
79-38- 4	41.6736	95.2872	370.03	147.5	261.7	220.3	-95.9
79-38- 8	41.6642	95.2975	364.24	149.4	261.8	221.1	-95.2
79-38- 9	41.6639	95.2872	373.38	149.4	264.6	222.8	-93.4
79-38-10	41.6639	95.2683	398.68	149.3	272.3	227.7	-88.6
79-38-13	41.6458	95.2269	371.25	180.7	295.2	253.7	-62.5
79-38-15	41.6458	95.2536	393.19	166.3	287.6	243.6	-72.6
79-38-16	41.6458	95.2872	390.14	155.0	275.4	231.7	-84.5
79-38-17	41.6458	95.3111	362.71	153.4	265.3	224.8	-91.5
79-38-20	41.6311	95.3089	369.11	159.9	273.8	232.5	-83.8
79-38-21	41.6311	95.2872	416.36	158.2	286.7	240.1	-76.1
79-38-22	41.6311	95.2681	390.75	169.9	290.5	246.7	-69.5
79-38-23	41.6311	95.2536	398.37	172.9	295.8	251.2	-65.0
79-38-24	41.6311	95.2289	368.81	186.2	300.0	258.7	-57.5
79-38-25	41.6167	95.2336	364.85	192.6	305.2	264.3	-51.9
79-38-26	41.6167	95.2533	377.95	184.5	301.2	258.9	-57.4
79-38-27	41.6167	95.2678	403.86	174.5	299.1	254.0	-62.3
79-38-28	41.6167	95.2870	418.19	165.7	294.7	247.9	-68.3

STATION NO.	N. LATITUDE (DEGREES)	W. LONGITUDE (DEGREES)	ELEVATION (METERS)	OBSERVED GRAVITY (MGALS)	FREE AIR GRAVITY (MGALS)	BOUGUER GRAVITY (MGALS)	BOUGUER ANOMALY (MGALS)
79-38-33	41.6022	95.2919	397.46	176.9	299.5	255.1	-61.2
79-38-34	41.6022	95.2697	396.24	183.8	306.8	261.7	-54.5
79-38-35	41.6022	95.2533	366.98	194.3	307.5	266.5	-49.8
79-39- 2	41.6750	95.3558	427.94	130.1	262.1	214.3	-102.0
79-39- 3	41.6750	95.3844	425.50	130.6	261.9	214.3	-101.9
79-39-10	41.6603	95.3844	419.10	132.8	262.1	215.2	-101.0
79-39-11	41.6603	95.3653	420.32	132.4	262.1	215.1	-101.1
79-39-14	41.6453	95.3653	409.96	136.6	263.1	217.2	-99.0
79-39-15	41.6453	95.3842	416.36	136.3	264.7	218.2	-98.0
79-39-19	41.6239	95.4417	409.65	136.4	262.8	217.0	-99.2
79-39-20	41.6311	95.4225	414.22	135.5	263.4	217.0	-99.2
79-39-21	41.6311	95.4033	410.26	137.2	263.8	217.9	-98.3
79-39-23	41.6311	95.3647	409.04	140.3	266.6	220.8	-95.4
79-39-24	41.6311	95.3358	376.43	152.0	268.2	226.1	-90.1
79-39-25	41.6167	95.3358	372.47	159.7	274.6	232.9	-83.3
79-39-26	41.6167	95.3647	405.08	146.3	271.4	226.0	-90.2
79-39-27	41.6239	95.3842	411.48	140.0	267.0	221.0	-95.2
79-39-28	41.6239	95.4033	403.00	140.0	264.6	219.4	-96.8
79-39-30	41.6167	95.4417	393.00	140.7	262.2	218.2	-98.0
79-39-31	41.6022	95.4392	416.97	139.5	260.1	221.5	-94.7
79-39-32	41.6095	95.4239	418.00	139.2	268.4	221.6	-94.6
79-39-33	41.5967	95.4030	410.26	152.0	278.6	232.7	-83.5
79-39-34	41.5967	95.3839	395.02	159.6	281.5	237.3	-78.9
79-39-35	41.6022	95.3647	395.63	157.4	279.5	235.2	-81.0
79-39-36	41.6022	95.3358	368.01	170.9	284.7	243.4	-72.8
79-40- 5	41.6886	95.5497	400.74	132.7	258.9	213.1	-103.0
79-40- 6	41.6745	95.5594	428.55	128.8	261.0	213.1	-103.1
79-40- 7	41.6603	95.5594	395.33	136.7	258.7	214.4	-101.7
79-40-14	41.6450	95.4783	418.00	132.9	262.1	215.3	-100.9
79-40-18	41.6450	95.5589	421.84	132.2	262.4	215.2	-101.0
79-40-19	41.6300	95.5589	404.17	136.9	261.7	216.5	-99.7
79-40-30	41.6164	95.5589	377.65	142.9	259.4	217.2	-99.0
79-40-31	41.6019	95.5589	362.71	146.2	258.1	217.6	-98.6
80-34- 1	41.7611	94.7639	423.06	241.8	372.3	325.0	1.0
80-34- 2	41.7611	94.7833	430.38	238.2	371.0	322.9	-1.1
80-34- 3	41.7611	94.8025	420.02	237.5	367.1	320.1	-3.9
80-34- 4	41.7611	94.8217	407.21	236.6	362.3	316.8	-7.2
80-34- 5	41.7611	94.8400	425.50	229.6	360.9	313.3	-10.6
80-34- 8	41.7464	94.8400	441.96	226.9	363.3	313.8	-10.2
80-34- 9	41.7464	94.8217	425.50	233.5	364.8	317.2	-6.8
80-34-10	41.7464	94.8025	426.72	237.2	368.9	321.1	-2.9
80-34-12	41.7464	94.7639	400.43	246.3	372.3	326.6	2.7
80-34-15	41.7319	94.8025	428.55	237.6	369.8	321.9	-2.1
80-34-16	41.7319	94.8217	450.19	229.6	368.5	318.2	-5.8
80-34-17	41.7319	94.8400	435.26	239.8	374.1	325.4	1.4
80-34-19	41.7172	94.8600	403.25	235.9	360.4	315.2	-8.8
80-34-20	41.7172	94.8400	426.42	233.4	365.0	317.3	-6.7
80-34-22	41.7172	94.8025	437.00	238.2	373.1	324.2	0.2
80-34-27	41.7025	94.8025	426.11	242.2	373.7	326.0	2.0
80-34-29	41.7025	94.8400	420.32	237.0	366.7	319.7	-4.3
80-34-30	41.7025	94.8600	423.67	233.1	363.0	316.4	-7.6
80-34-31	41.6883	94.8597	418.19	236.9	366.0	319.2	-4.8
80-34-32	41.6883	94.8400	418.19	240.5	369.5	322.7	-1.3
80-35- 1	41.7600	94.8811	393.50	231.1	352.5	308.5	-15.5
80-35- 2	41.7600	94.8989	416.66	223.2	351.8	305.1	-18.9
80-35- 3	41.7600	94.9183	437.39	215.5	350.4	301.5	-22.5
80-35- 4	41.7611	94.9378	419.10	216.5	345.0	299.0	-25.0
80-35- 5	41.7611	94.9572	431.60	210.9	344.1	295.8	-28.2
80-35- 6	41.7611	94.9764	449.58	203.4	342.2	291.9	-32.1

STATION NO.	N. LATITUDE (DEGREES)	W. LONGITUDE (DEGREES)	ELEVATION (METERS)	OBSERVED GRAVITY (MGALS)	FREE AIR GRAVITY (MGALS)	BOUGUER GRAVITY (MGALS)	BOUGUER ANOMALY (MGALS)
80-35- 7	41.7467	94.9764	434.34	207.8	341.9	293.3	-30.7
80-35- 8	41.7467	94.9572	424.89	213.7	344.8	297.3	-26.7
80-35- 9	41.7467	94.9375	402.34	220.9	345.1	300.1	-23.9
80-35-10	41.7464	94.9183	431.60	217.5	350.7	302.4	-21.6
80-35-11	41.7464	94.8989	423.67	222.5	353.2	305.8	-18.2
80-35-12	41.7461	94.8745	409.35	229.5	355.8	310.1	-13.9
80-35-13	41.7319	94.8745	396.85	233.2	355.7	311.3	-12.7
80-35-14	41.7319	94.8989	409.65	226.2	352.6	306.7	-17.2
80-35-15	41.7319	94.9183	432.51	217.6	351.1	302.7	-21.3
80-35-16	41.7319	94.9375	414.53	219.2	347.1	300.7	-23.3
80-35-17	41.7319	94.9572	420.62	215.4	345.2	298.2	-25.8
80-35-20	41.7178	94.9569	420.62	217.0	346.8	299.8	-24.2
80-35-23	41.7175	94.8989	421.23	224.8	354.8	307.7	-16.3
80-35-24	41.7175	94.8742	388.93	236.2	356.3	312.7	-11.2
80-35-25	41.6956	94.8742	387.10	238.7	358.1	314.8	-9.1
80-35-26	41.6956	94.8989	412.09	229.5	356.6	310.5	-13.5
80-35-29	41.7033	94.9569	424.59	217.2	348.2	300.7	-23.3
80-35-30	41.7033	94.9764	438.91	212.5	348.0	298.9	-25.1
80-35-31	41.6892	94.9764	429.77	215.8	348.4	300.4	-23.6
80-35-32	41.6892	94.9567	429.46	217.5	350.1	302.0	-22.0
80-35-33	41.6892	94.9469	441.05	215.6	351.7	302.3	-21.7
80-35-34	41.6889	94.9183	390.14	232.8	353.2	309.5	-14.5
80-35-35	41.6889	94.8822	413.61	230.8	358.4	312.1	-11.8
80-35-36	41.6889	94.8742	407.82	235.9	361.8	316.2	-7.8
80-36- 1	41.7600	94.9956	439.52	202.0	337.6	288.5	-35.5
80-36- 2	41.7600	95.0150	430.68	199.9	332.8	284.6	-39.4
80-36- 3	41.7600	95.0342	402.03	201.7	325.8	280.8	-43.2
80-36- 4	41.7600	95.0536	409.65	195.4	321.8	276.0	-48.0
80-36- 5	41.7600	95.0731	407.52	190.4	316.2	270.6	-53.4
80-36- 6	41.7600	95.0936	406.60	184.3	309.8	264.3	-59.7
80-36- 7	41.7497	95.0936	406.91	187.7	313.2	267.7	-56.3
80-36- 8	41.7497	95.0731	390.14	197.0	317.4	273.7	-50.3
80-36- 9	41.7497	95.0536	396.24	200.9	323.2	278.8	-45.2
80-36-10	41.7497	95.0336	423.06	203.2	333.7	286.4	-37.6
80-36-11	41.7467	95.0150	400.51	209.2	332.8	288.0	-36.0
80-36-12	41.7467	94.9956	407.82	211.2	337.1	291.4	-32.5
80-36-13	41.7319	94.9956	416.36	211.2	339.7	293.1	-30.9
80-36-14	41.7319	95.0150	423.06	206.9	337.5	290.1	-33.9
80-36-16	41.7319	95.0439	423.37	201.5	332.1	284.8	-39.2
80-36-17	41.7319	95.0728	400.51	199.0	322.6	277.8	-46.2
80-36-18	41.7319	95.0936	415.75	190.9	319.2	272.7	-51.3
80-36-20	41.7175	94.0561	404.47	201.6	326.4	281.2	-42.8
80-36-21	41.7175	95.0439	438.00	201.2	336.4	287.4	-36.6
80-36-22	41.7175	95.0439	427.64	205.1	337.0	289.2	-34.8
80-36-23	41.7175	95.0147	454.15	201.7	341.9	291.1	-32.9
80-36-24	41.7175	94.9956	440.13	207.8	343.6	294.4	-29.6
80-36-25	41.7030	94.9953	448.97	207.8	346.3	296.1	-27.9
80-36-26	41.7030	95.0147	433.43	208.4	342.2	293.7	-30.3
80-36-27	41.7030	95.0342	451.71	202.0	341.4	290.8	-33.2
80-36-28	41.7030	95.0439	459.33	198.9	340.7	289.3	-34.7
80-36-29	41.7030	95.0728	444.09	196.6	333.6	283.9	-40.1
80-36-30	41.7030	95.0933	424.59	196.4	327.4	279.9	-44.1
80-36-31	41.6886	95.0933	436.17	197.2	331.8	283.0	-41.0
80-36-32	41.6886	95.0728	443.48	199.8	336.6	287.0	-37.0
80-36-33	41.6886	95.0536	431.60	205.7	338.9	290.6	-33.4
80-36-34	41.6886	95.0342	455.90	203.4	344.1	293.1	-30.9
80-36-35	41.6886	95.0147	417.50	213.8	342.7	296.0	-28.0
80-36-36	41.6886	94.9953	433.12	212.5	346.2	297.7	-26.3
80-37- 1	41.7603	95.1147	423.37	174.3	305.0	257.6	-66.4

STATION NO.	N. LATITUDE (DEGREES)	W. LONGITUDE (DEGREES)	ELEVATION (METERS)	OBSERVED GRAVITY (MGALS)	FREE AIR GRAVITY (MGALS)	BOUGUER GRAVITY (MGALS)	BOUGUER ANOMALY (MGALS)
80-37- 2	41.7603	95.1336	419.10	167.9	297.3	250.4	-73.6
80-37- 3	41.7606	95.1530	300.93	165.9	285.9	242.4	-81.6
80-37- 5	41.7608	95.1922	430.99	142.8	275.8	227.6	-96.4
80-37- 6	41.7611	95.2111	439.22	137.7	273.2	224.1	-99.9
80-37- 7	41.7467	95.2108	425.50	143.2	274.5	226.9	-97.1
80-37- 8	41.7467	95.1919	409.04	152.4	278.6	232.9	-91.1
80-37-10	41.7461	95.1530	405.69	169.1	294.3	248.9	-75.1
80-37-11	41.7392	95.1333	413.61	177.3	304.9	258.6	-65.4
80-37-12	41.7389	95.1145	380.93	188.8	308.8	265.3	-58.7
80-37-13	41.7317	95.1142	386.10	191.9	311.0	267.8	-56.2
80-37-14	41.7317	95.1333	395.02	183.8	305.7	261.5	-62.5
80-37-15	41.7319	95.1528	419.41	172.4	301.8	254.9	-69.1
80-37-16	41.7319	95.1720	394.11	170.7	292.3	248.2	-75.8
80-37-17	41.7322	95.1917	400.43	159.8	285.9	240.2	-83.8
80-37-18	41.7322	95.2108	419.10	149.3	278.7	231.8	-92.2
80-37-19	41.7180	95.2108	415.44	157.2	285.4	238.9	-85.1
80-37-20	41.7180	95.1917	407.21	166.9	292.6	247.0	-77.0
80-37-22	41.7175	95.1528	384.05	184.9	303.4	260.4	-63.6
80-37-24	41.7172	95.1142	418.00	189.1	318.3	271.4	-52.6
80-37-25	41.7028	95.1142	404.78	196.0	320.9	275.6	-48.4
80-37-26	41.7028	95.1328	388.32	194.1	314.0	270.5	-53.5
80-37-27	41.7030	95.1528	422.76	181.2	311.7	264.4	-59.6
80-37-30	41.7036	95.2108	382.22	170.3	288.2	245.5	-78.5
80-37-31	41.6889	95.2108	373.38	177.9	293.2	251.4	-72.6
80-37-32	41.6886	95.1811	393.50	183.7	305.2	261.1	-62.9
80-37-33	41.6886	95.1720	413.31	182.0	309.5	263.3	-60.7
80-37-34	41.6883	95.1528	423.37	185.3	315.9	268.6	-55.4
80-37-35	41.6880	95.1328	426.42	189.9	321.5	273.8	-50.2
80-37-36	41.6880	95.1139	417.58	196.8	325.7	279.0	-45.0
80-38-13	41.7319	95.2303	414.83	144.9	272.9	226.5	-97.5
80-38-14	41.7319	95.2544	377.34	150.1	266.5	224.3	-99.7
80-38-23	41.7178	95.2544	394.11	147.5	269.2	225.1	-98.9
80-38-24	41.7178	95.2303	417.27	148.1	276.8	230.2	-93.8
80-38-25	41.7033	95.2303	400.43	155.7	281.8	236.1	-87.9
80-38-26	41.7033	95.2544	388.93	151.1	271.1	227.6	-96.4
80-38-27	41.7030	95.2686	372.47	152.6	267.6	225.9	-98.1
81-34- 1	41.8494	94.7653	390.75	252.4	373.0	329.3	-2.7
81-34- 2	41.8494	94.7833	416.66	243.7	372.3	325.7	-6.3
81-34- 3	41.8494	94.8025	410.57	241.8	368.5	322.6	-9.4
81-34- 4	41.8494	94.8219	400.74	238.8	364.9	319.2	-12.0
81-34- 5	41.8494	94.8414	440.44	228.3	364.3	315.0	-17.0
81-34- 7	41.8350	94.8608	400.43	233.4	359.4	313.7	-18.2
81-34- 8	41.8350	94.8414	426.11	232.5	364.0	316.3	-15.6
81-34- 9	41.8350	94.8219	418.49	237.8	366.9	320.1	-11.8
81-34-10	41.8350	94.8025	400.13	243.5	369.4	323.8	-8.2
81-34-11	41.8350	94.7833	404.17	247.5	372.2	327.0	-5.0
81-34-12	41.8350	94.7639	421.23	246.6	376.6	329.5	-2.5
81-34-13	41.8206	94.7639	418.49	247.9	377.0	330.2	-1.7
81-34-14	41.8206	94.7833	434.04	241.8	375.8	327.2	-4.7
81-34-15	41.8206	94.8025	430.07	239.7	372.4	324.3	-7.7
81-34-16	41.8206	94.8219	427.64	236.8	368.8	320.9	-11.0
81-34-17	41.8206	94.8414	403.25	239.0	363.4	318.3	-13.6
81-34-18	41.8206	94.8608	426.42	230.4	362.0	314.3	-17.6
81-34-19	41.8061	94.8606	412.40	234.8	362.1	315.9	-16.0
81-34-20	41.8061	94.8414	412.70	238.0	365.3	319.2	-12.8
81-34-21	41.8061	94.8219	423.67	238.6	369.4	322.0	-10.0
81-34-22	41.8061	94.8025	440.74	238.2	374.3	325.0	-7.0
81-34-23	41.8061	94.7833	436.47	242.2	376.9	328.0	-3.9
81-34-24	41.8061	94.7639	393.50	254.2	375.7	331.6	-0.3

STATION NO.	N. LATITUDE (DEGREES)	W. LONGITUDE (DEGREES)	ELEVATION (METERS)	OBSERVED GRAVITY (MGALS)	FREE AIR GRAVITY (MGALS)	BOUGUER GRAVITY (MGALS)	BOUGUER ANOMALY (MGALS)
81-34-25	41.7914	94.7639	487.21	251.8	377.4	331.9	-8.1
81-34-26	41.7914	94.7833	439.22	242.5	378.1	328.9	-3.8
81-34-27	41.7914	94.8025	448.13	239.4	375.3	326.8	-5.9
81-34-28	41.7914	94.8219	415.44	241.2	369.4	323.8	-9.8
81-34-29	41.7914	94.8414	412.89	238.8	366.8	319.9	-12.1
81-34-30	41.7914	94.8606	404.78	237.5	362.4	317.2	-14.8
81-34-32	41.7775	94.8414	398.37	242.8	365.8	321.2	-18.8
81-34-33	41.7775	94.8219	418.57	243.8	369.7	323.7	-8.2
81-34-34	41.7689	94.8025	409.65	247.2	373.6	327.8	-4.1
81-35- 1	41.8494	94.8797	418.26	227.4	354.8	308.1	-23.8
81-35- 2	41.8494	94.8997	425.28	219.8	358.2	302.7	-29.3
81-35- 3	41.8494	94.9192	428.62	214.2	344.8	296.9	-35.8
81-35- 4	41.8494	94.9386	447.14	202.9	348.8	298.8	-41.1
81-35- 5	41.8494	94.9578	447.75	198.7	336.9	286.8	-45.2
81-35- 6	41.8494	94.9772	438.99	198.2	331.2	283.8	-49.8
81-35- 7	41.8358	94.9772	413.92	204.7	332.5	286.2	-45.8
81-35- 8	41.8358	94.9575	448.13	202.9	338.8	289.5	-42.4
81-35- 9	41.8358	94.9383	433.43	209.7	343.4	294.9	-37.8
81-35-10	41.8358	94.9192	439.52	214.8	349.6	300.5	-31.5
81-35-11	41.8358	94.8997	426.11	222.8	353.5	305.8	-26.1
81-35-12	41.8358	94.8797	425.28	226.3	357.5	318.8	-22.8
81-35-13	41.8286	94.8797	427.64	226.9	358.9	311.1	-28.9
81-35-14	41.8286	94.8994	439.52	228.9	356.5	307.4	-24.6
81-35-15	41.8286	94.9189	446.84	215.1	353.8	303.8	-28.9
81-35-16	41.8286	94.9383	428.85	214.6	347.8	299.8	-33.8
81-35-17	41.8286	94.9575	413.88	212.8	348.2	294.8	-37.9
81-35-18	41.8286	94.9769	408.43	208.5	334.6	288.9	-43.1
81-35-19	41.8061	94.9769	416.97	218.3	339.8	292.4	-39.6
81-35-20	41.7986	94.9575	445.31	218.8	348.2	298.4	-33.6
81-35-22	41.8061	94.9189	452.32	216.8	355.6	305.8	-27.8
81-35-23	41.8061	94.8994	452.82	219.7	359.2	308.6	-23.3
81-35-24	41.8061	94.8797	417.58	238.6	359.5	312.8	-19.2
81-35-25	41.7917	94.8794	429.46	229.1	361.6	313.6	-18.4
81-35-26	41.7917	94.8992	442.57	223.1	359.7	318.2	-21.8
81-35-27	41.7917	94.9186	441.35	228.1	356.3	307.8	-25.8
81-35-28	41.7917	94.9383	438.61	217.3	352.7	303.6	-28.3
81-35-29	41.7917	94.9575	445.31	212.1	349.5	299.7	-32.2
81-35-30	41.7917	94.9714	437.39	218.5	345.5	296.5	-35.4
81-35-31	41.7772	94.9758	428.82	215.6	345.2	298.3	-33.7
81-35-32	41.7772	94.9572	446.53	213.8	351.6	301.6	-38.3
81-35-33	41.7772	94.9383	438.88	219.2	354.4	305.4	-26.6
81-35-34	41.7772	94.9186	426.72	224.9	356.6	308.8	-23.1
81-35-35	41.7772	94.8992	441.96	224.4	368.8	311.4	-28.6
81-35-36	41.7772	94.8794	428.32	232.4	362.1	315.1	-16.9
81-36- 1	41.8489	94.9967	424.28	194.7	325.6	278.1	-53.8
81-36- 2	41.8489	95.0158	444.48	183.8	321.8	271.3	-68.6
81-36- 3	41.8489	95.0353	439.83	177.8	313.6	264.4	-67.5
81-36- 4	41.8489	95.0547	448.67	167.2	305.7	255.5	-76.4
81-36- 5	41.8489	95.0739	433.12	161.1	294.8	246.3	-85.6
81-36- 6	41.8489	95.0942	429.77	154.8	286.6	238.6	-93.3
81-36- 7	41.8344	95.0942	429.77	158.5	291.1	243.8	-88.9
81-36- 8	41.8344	95.0739	454.15	163.1	303.2	252.4	-79.5
81-36- 9	41.8344	95.0547	431.29	177.8	318.1	261.8	-78.1
81-36-10	41.8344	95.0353	414.22	188.2	316.1	269.7	-62.2
81-36-11	41.8344	95.0158	429.16	191.5	324.8	276.8	-56.8
81-36-12	41.8344	94.9967	435.86	195.8	330.3	281.6	-58.3
81-36-13	41.8288	94.9967	431.68	199.8	333.8	284.7	-47.2
81-36-14	41.8288	95.0158	429.46	195.4	327.9	279.9	-52.8
81-36-15	41.8288	95.0353	416.66	191.8	328.4	273.8	-58.2

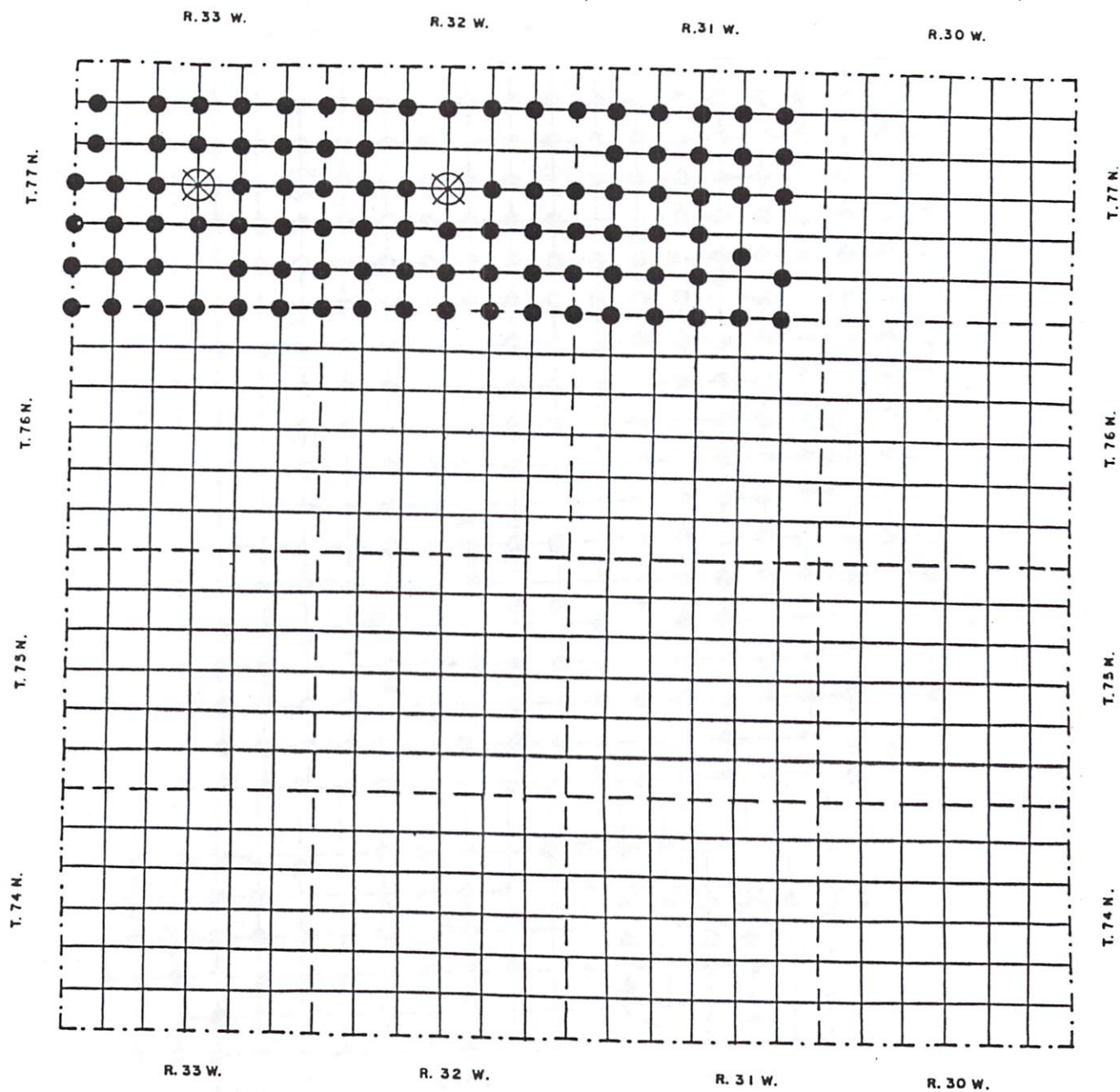
STATION NO.	N. LATITUDE (DEGREES)	W. LONGITUDE (DEGREES)	ELEVATION (METERS)	OBSERVED GRAVITY (MGALS)	FREE AIR GRAVITY (MGALS)	BOUGUER GRAVITY (MGALS)	BOUGUER ANOMALY (MGALS)
81-36-16	41.8200	95.0547	445.31	178.6	316.1	266.3	-65.7
81-36-17	41.8200	95.0739	428.55	174.0	306.3	258.3	-73.6
81-36-18	41.8200	95.0942	411.79	166.6	293.7	247.6	-84.3
81-36-19	41.8056	95.0942	415.14	171.5	299.6	253.1	-78.8
81-36-20	41.8056	95.0733	455.07	173.3	313.7	262.8	-69.1
81-36-21	41.8056	95.0544	424.28	187.5	318.4	270.9	-61.0
81-36-22	41.8056	95.0353	426.11	193.7	325.2	277.5	-54.4
81-36-23	41.8056	95.0153	413.61	202.0	329.6	283.3	-48.6
81-36-24	41.8056	94.9964	422.76	204.6	335.1	287.8	-44.1
81-36-25	41.7411	94.9964	421.23	211.8	341.7	294.6	-37.3
81-36-26	41.7911	95.0153	399.29	208.0	331.2	286.5	-45.4
81-36-27	41.7911	95.0347	429.16	196.7	329.1	281.1	-50.8
81-36-28	41.7911	95.0544	426.42	191.8	323.4	275.7	-56.2
81-36-29	41.7911	95.0733	438.91	182.2	317.6	268.5	-63.4
81-36-30	41.7911	95.0942	435.86	173.9	308.4	259.7	-72.2
81-36-31	41.7761	95.0942	425.50	182.5	313.8	266.2	-65.7
81-36-32	41.7761	95.0733	432.82	188.5	322.0	273.6	-58.3
81-36-33	41.7761	95.0544	429.46	195.1	327.6	279.6	-52.3
81-36-34	41.7761	95.0347	421.54	201.9	331.9	284.8	-47.1
81-36-35	41.7761	95.0153	411.79	208.6	335.7	289.6	-42.3
81-36-36	41.7842	94.9964	411.48	211.7	338.6	292.6	-39.3
81-37- 1	41.8492	95.1153	434.65	148.5	282.6	234.0	-97.9
81-37- 2	41.8492	95.1347	420.02	148.9	278.6	231.6	-100.4
81-37- 3	41.8492	95.1542	405.38	150.6	275.7	230.4	-101.6
81-37- 4	41.8492	95.1739	434.34	143.6	277.7	229.1	-102.8
81-37- 5	41.8492	95.1931	411.48	148.2	275.1	229.1	-102.8
81-37- 6	41.8492	95.2114	433.73	142.5	276.3	227.8	-104.1
81-37- 7	41.8344	95.2114	422.45	144.5	274.9	227.6	-104.3
81-37- 8	41.8344	95.1931	404.17	149.3	274.1	228.8	-103.1
81-37-12	41.8344	95.1153	437.69	149.8	284.9	235.9	-96.0
81-37-13	41.8203	95.1153	422.15	155.8	286.1	238.9	-93.1
81-37-14	41.8203	95.1344	442.27	146.9	283.4	233.9	-98.0
81-37-15	41.8203	95.1539	401.73	152.4	276.4	231.5	-100.5
81-37-16	41.8203	95.1736	397.76	152.0	274.7	230.2	-101.7
81-37-17	41.8203	95.1928	400.51	150.4	274.0	229.2	-102.7
81-37-18	41.8203	95.2111	389.84	151.8	272.1	228.5	-103.4
81-37-19	41.8056	95.2111	385.57	152.8	271.8	228.6	-103.3
81-37-23	41.8056	95.1344	424.59	153.3	284.3	236.8	-95.1
81-37-24	41.8056	95.1150	412.40	162.1	289.4	243.2	-88.7
81-37-25	41.7911	95.1150	422.76	167.2	297.7	250.4	-81.5
81-37-26	41.7911	95.1344	397.46	163.6	286.3	241.8	-90.1
81-37-27	41.7911	95.1539	431.60	150.7	283.9	235.6	-96.4
81-37-28	41.7911	95.1733	419.10	150.2	279.6	232.7	-99.3
81-37-29	41.7911	95.1925	397.46	153.2	275.9	231.4	-100.5
81-37-34	41.7769	95.1539	418.19	158.6	287.7	240.9	-91.0
81-37-36	41.7769	95.1150	413.00	177.2	304.7	258.5	-73.4

STATION LOCATIONS

ADAIR COUNTY

IOWA

Scale: 1" = 4 miles

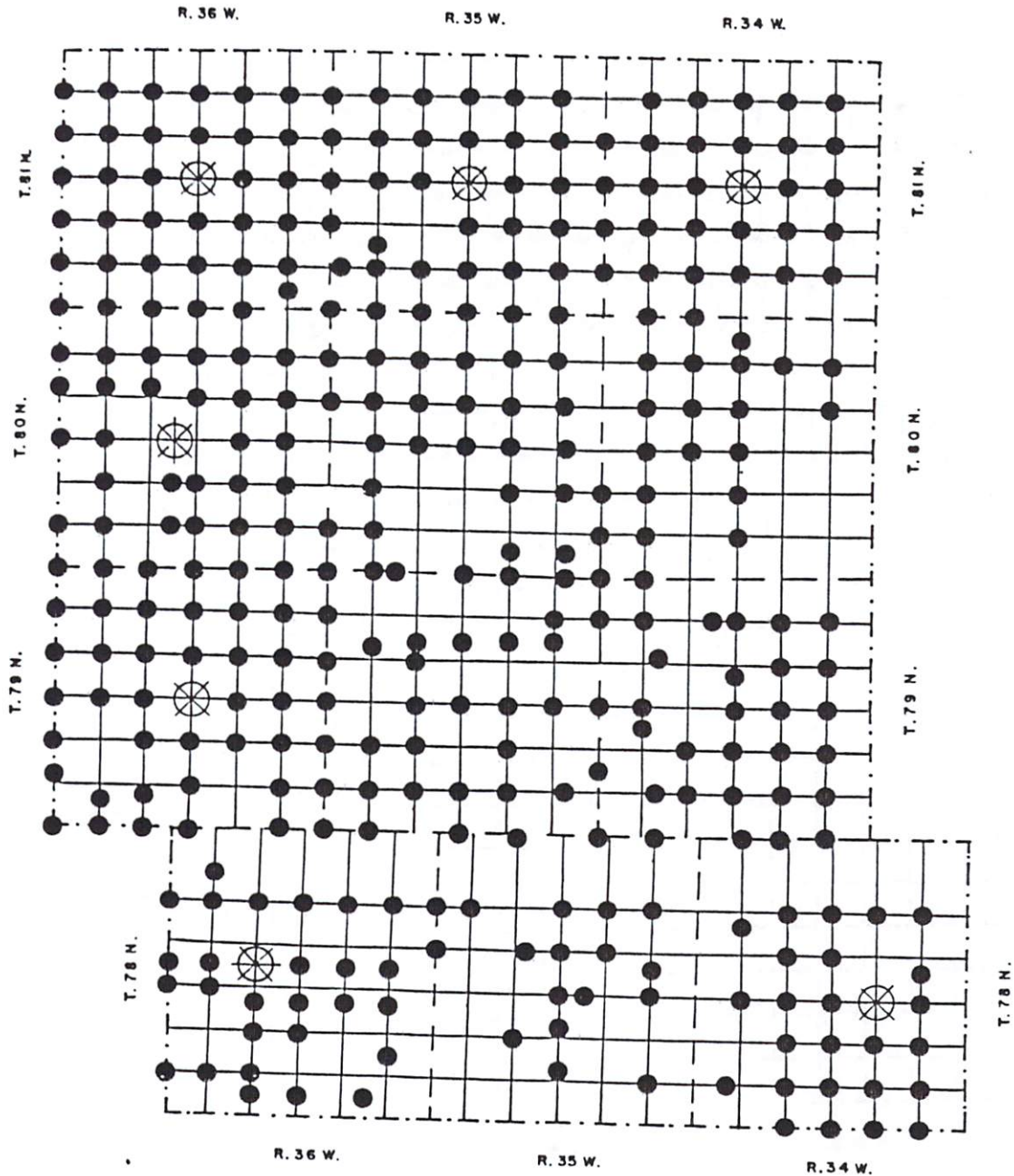


⊗ Township center gravity stations established by Daut(1979), used as base stations for this survey.

● New gravity stations established by this survey.

AUDUBON COUNTY IOWA

Scale: 1" = 4 miles



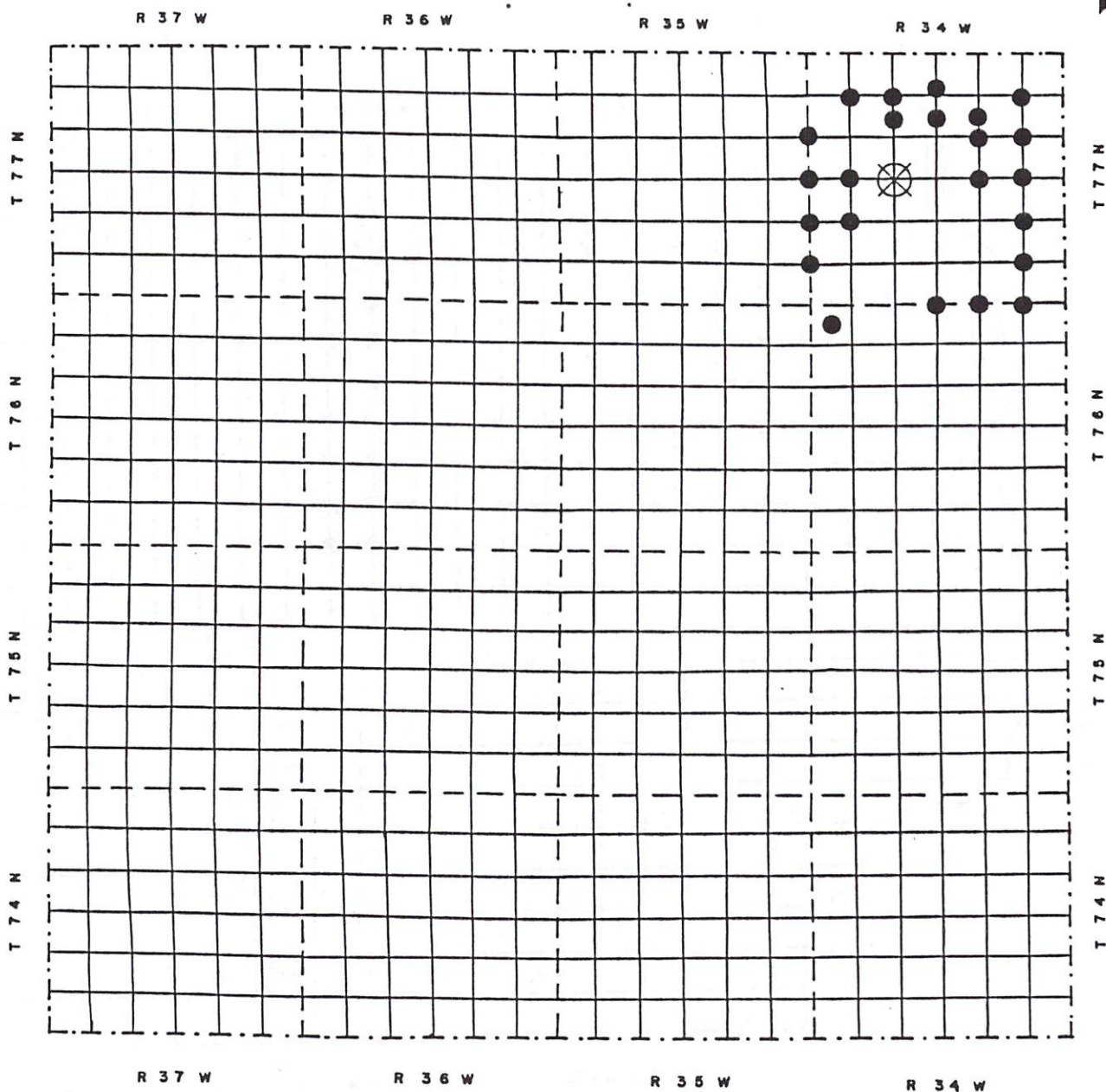
⊗ Township center gravity stations established by Daut(1979), used as base stations for this survey.

● New gravity stations established by this survey.

CASS COUNTY

IOWA

Scale: 1" = 4 miles

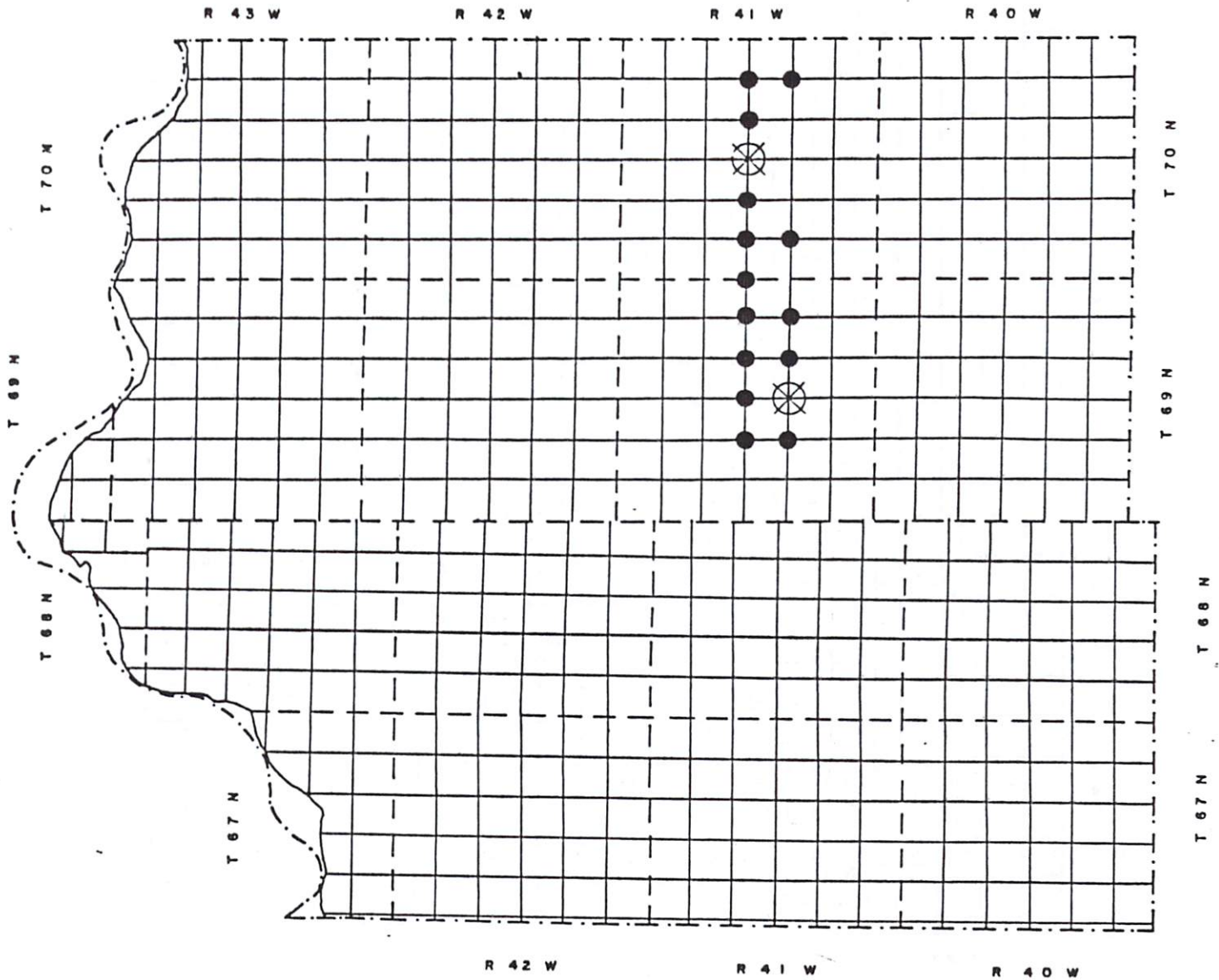


⊗ Township center gravity stations established by Daut(1979), used as base stations for this survey.

● New gravity stations established by this survey.

FREMONT COUNTY IOWA

Scale; 1" = 4 miles

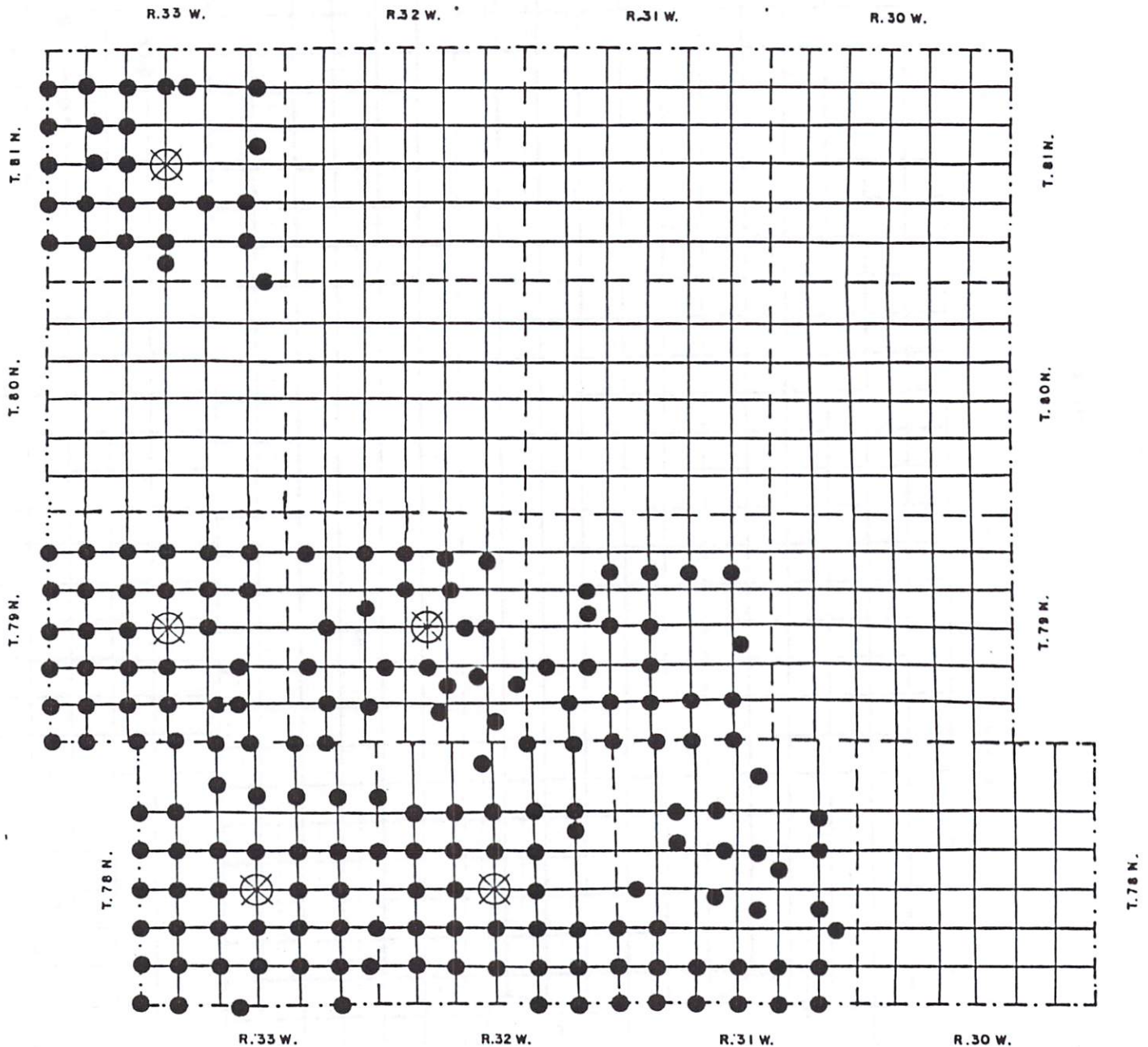


⊗ Township center gravity stations established by Daut(1979), used as base stations for this survey.

● New gravity stations established by this survey.

GUTHRIE COUNTY IOWA

Scale: 1" = 4 miles



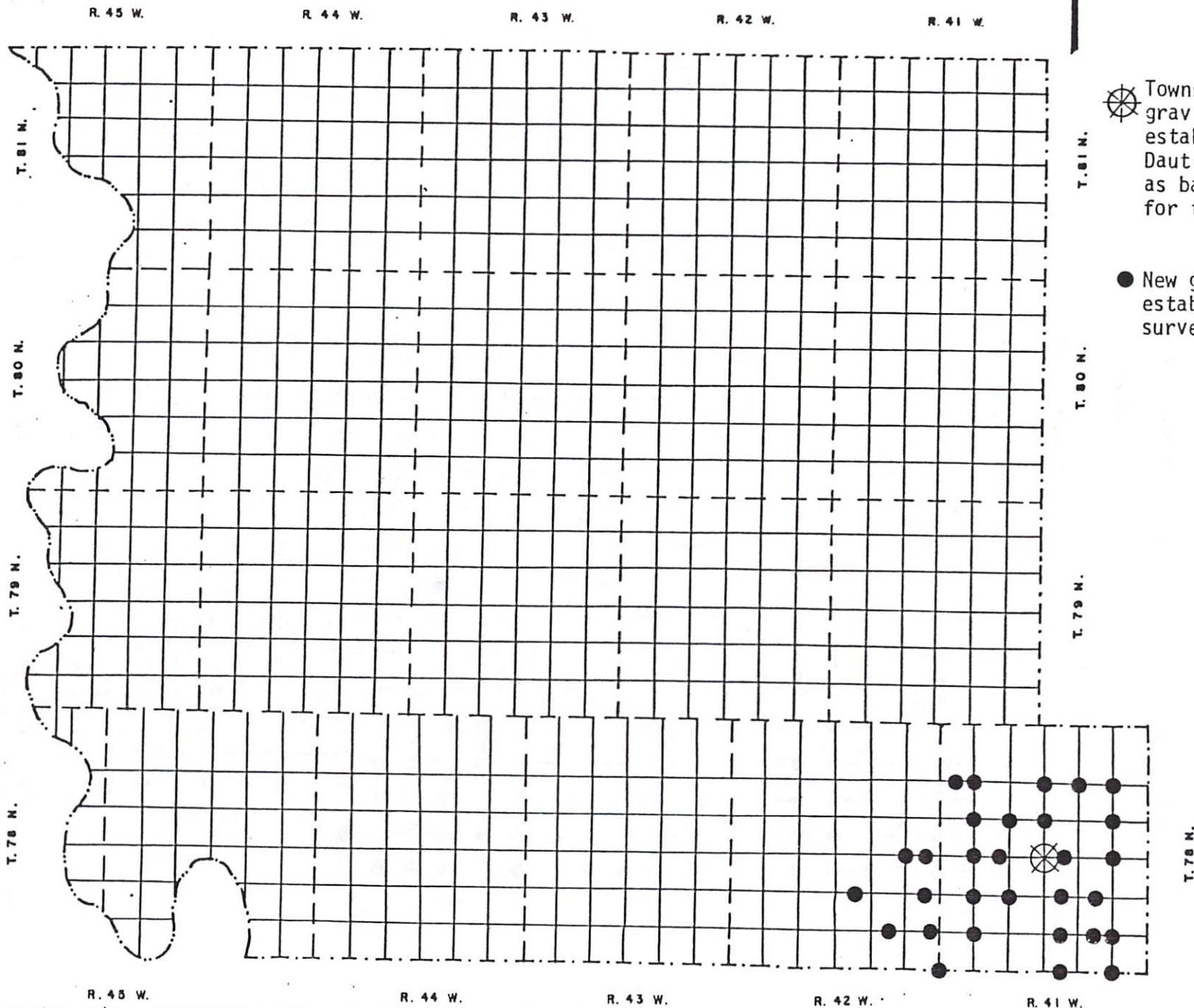
⊗ Township center gravity stations established by Daut(1979), used as base stations for this survey.

● New gravity stations established by this survey.

HARRISON COUNTY

IOWA

Scale: 1" = 4 miles



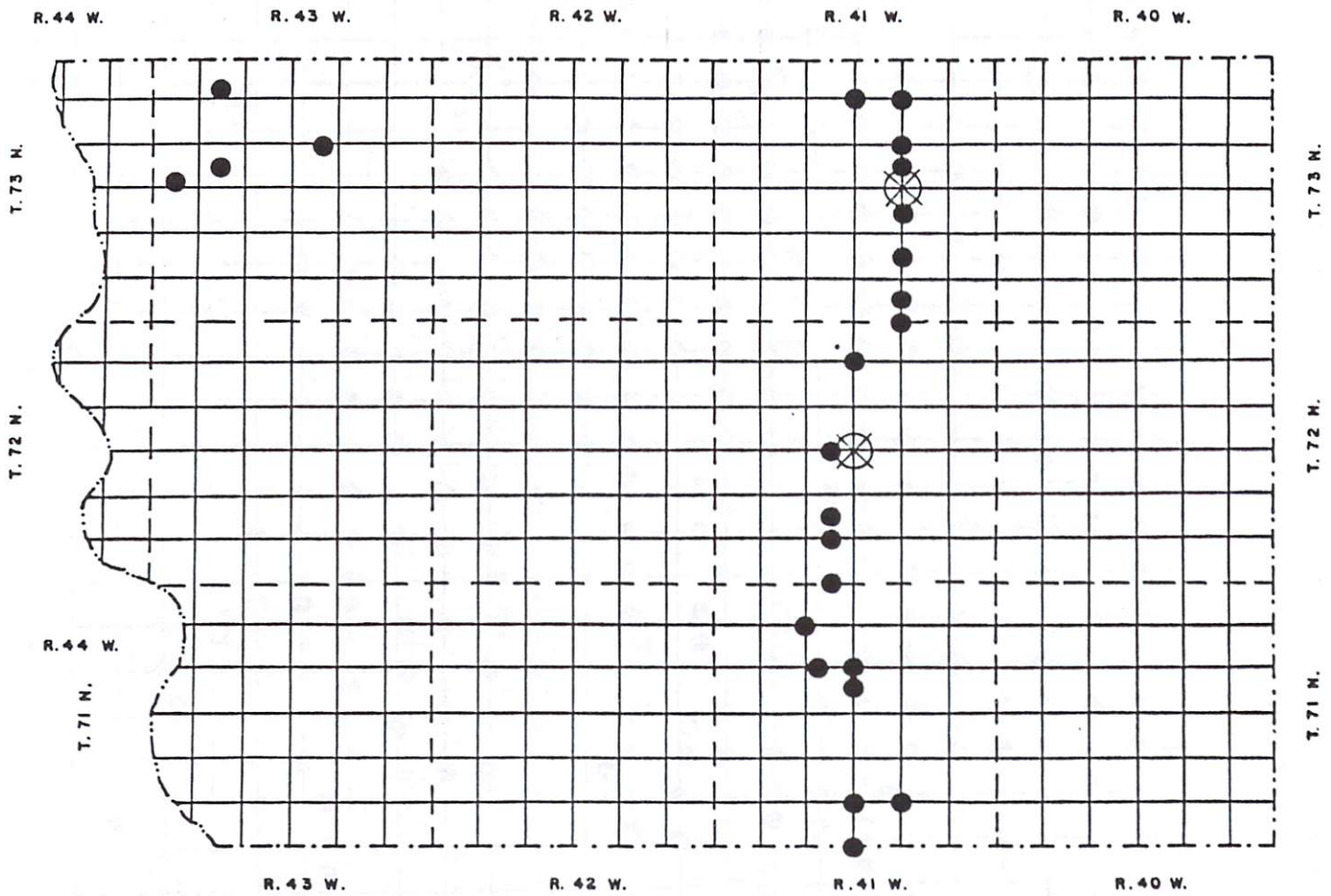
⊗ Township center gravity stations established by Daut(1979), used as base stations for this survey.

● New gravity stations established by this survey.

MILLS COUNTY

IOWA

Scale: 1" = 4 miles



⊗ Township center gravity stations established by Daut(1979), used as base stations for this survey.

● New gravity stations established by this survey.

POTTAWATTAMIE COUNTY

IOWA

Scale: 1" = 4 miles

⊗ Township center gravity stations established by Daut(1979), used as base stations for this survey.

● New gravity stations established by this survey.



R. 44 W.

R. 43 W.

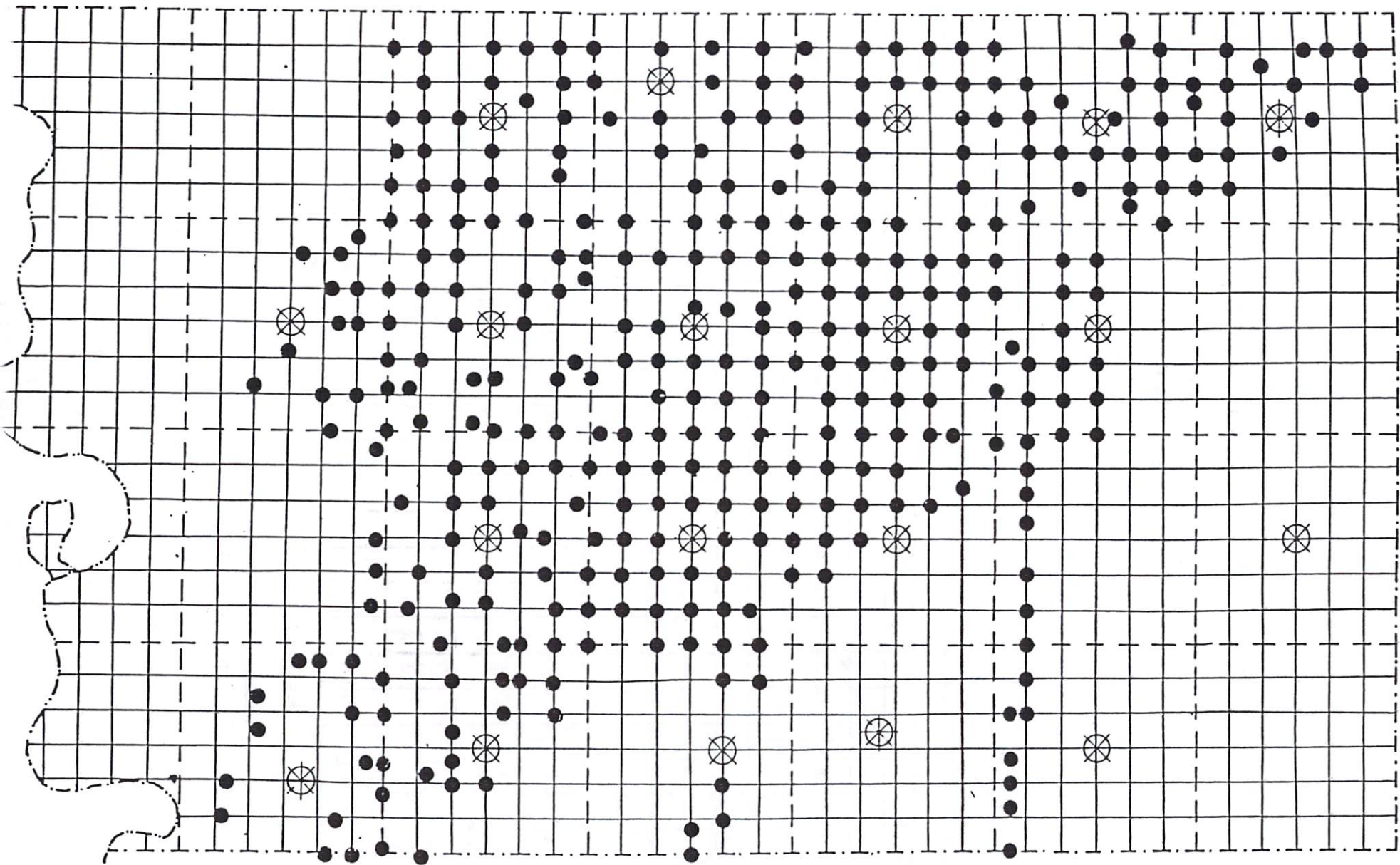
R. 42 W.

R. 41 W.

R. 40 W.

R. 39 W.

R. 38 W.



T. 77 N.

T. 76 N.

34

T. 75 N.

T. 74 N.

R. 44 W.

R. 43 W.

R. 42 W.

R. 41 W.

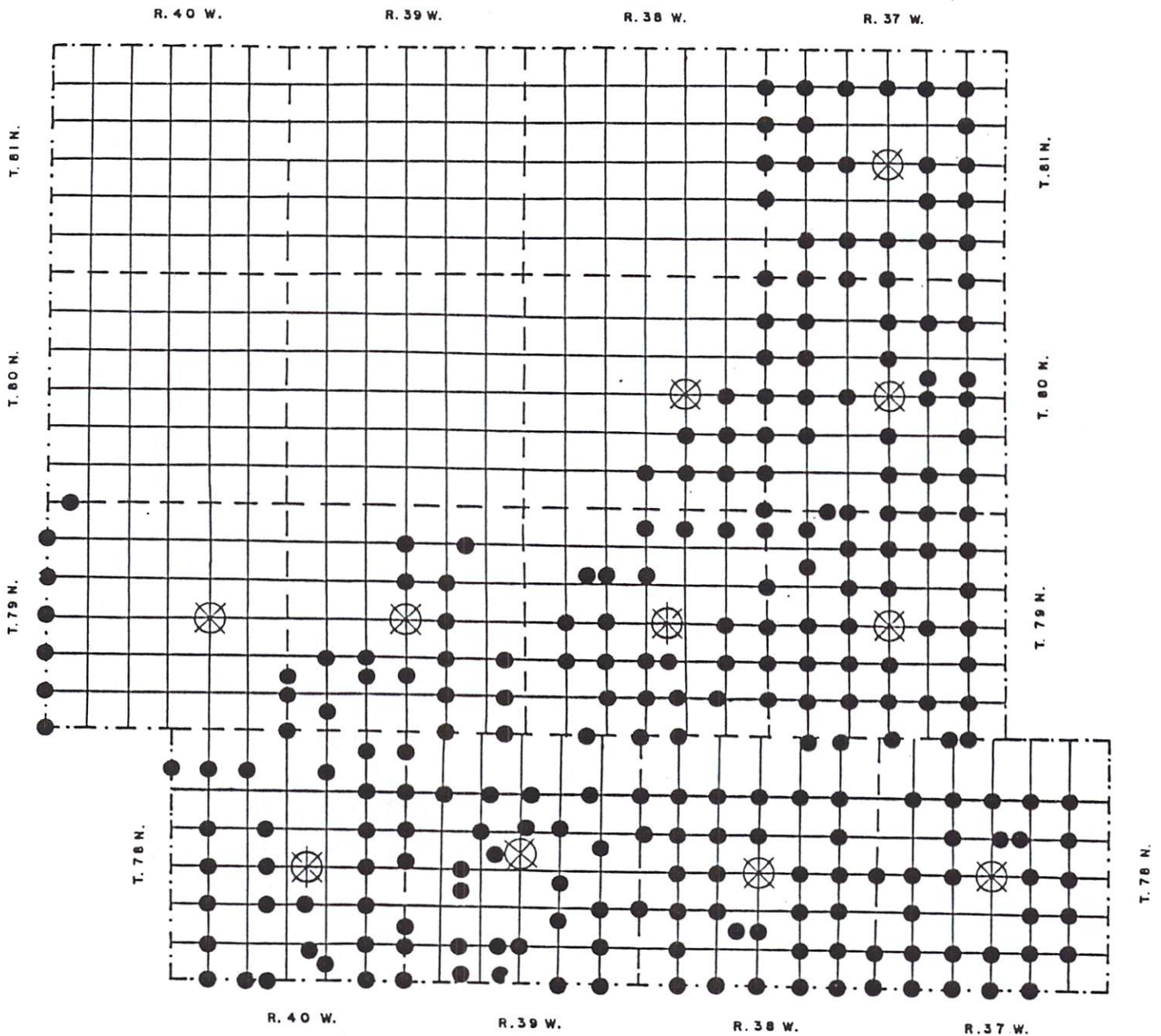
R. 40 W.

R. 39 W.

R. 38 W.

SHELBY COUNTY IOWA

Scale: 1" = 4 miles



⊗ Township center gravity stations established by Daut(1979), used as base stations for this survey.

● New gravity stations established by this survey.