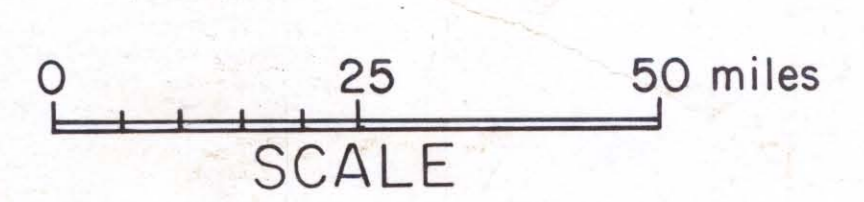


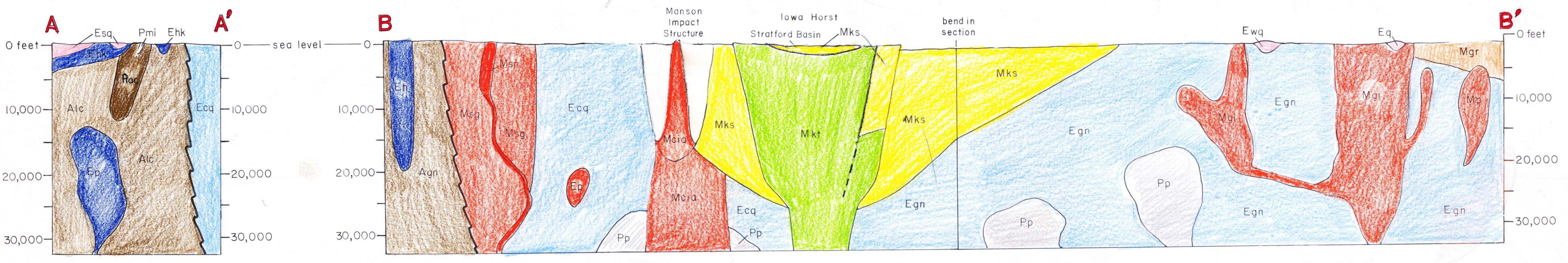
PRECAMBRIAN GEOLOGY OF IOWA AND SURROUNDING AREA

by
Raymond R. Anderson
1995



Open File Map 95-1
IOWA GEOLOGICAL SURVEY BUREAU

*MKS Ewq
more pink
upgrade for
RT25*



EXPLANATION OF SYMBOLS

<p>MIDDLE PROTEROZOIC</p> <p>Keweenaw Supergroup Grenville Interval</p> <ul style="list-style-type: none"> Mks Keweenaw clastics dominated Mkv Keweenaw volcanics dominated Mkt Thor Volcanic Group <p>Western Granite-Rhyolite Interval predominantly granitic plutons</p> <p>Eastern Granite-Rhyolite Interval predominantly granites and rhyolites</p> <ul style="list-style-type: none"> Mg Quimby Granite Mh Green Island Plutonic Group Mci Central Iowa Arch Granite Msn Spencer Norite Msa Spencer Granite <p>Matatzal Interval</p> <ul style="list-style-type: none"> EP3 predominantly granitic plutons Egn3 gneiss and granite terrane 	<p>EARLY PROTEROZOIC</p> <p>Baraboo Interval</p> <ul style="list-style-type: none"> Eq quartzite dominated Eba Baraboo Quartzite Esa Sioux Quartzite Eca Cedar Rapids Quartzite Ewa Washington County Quartzite <p>Central Plains Interval</p> <ul style="list-style-type: none"> Egn2 gneiss and granite terrane <p>Penokean Interval</p> <ul style="list-style-type: none"> Epa late stage granites and rhyolites Epk Hull Keratophyre Epr post-orogenic granitic plutons Eph Harris Granite Ehr Hawarden Granite <ul style="list-style-type: none"> Egn gneiss and granite terrane Eca Camp Quest Gneiss 	<p>Trans-Hudson Interval</p> <ul style="list-style-type: none"> Egr predominantly granitic rocks <p>Middle to Late Archean</p> <ul style="list-style-type: none"> Agm Gneiss and Migmatite Terrane Aly Lyon County Gneiss Amg Morton Gneiss <p>Rocks of Unknown Affinities</p> <ul style="list-style-type: none"> Eor Otter Creek Mafic Complex Epm Matlock Banded-Iron Formation Epo Osborne Mafic Complex Epp Northeast Iowa Plutonic Complex
--	--	--

suture
 fault
 limits of overthrust clastics
 lithologic contact
 geophysical trend
 line of cross-section