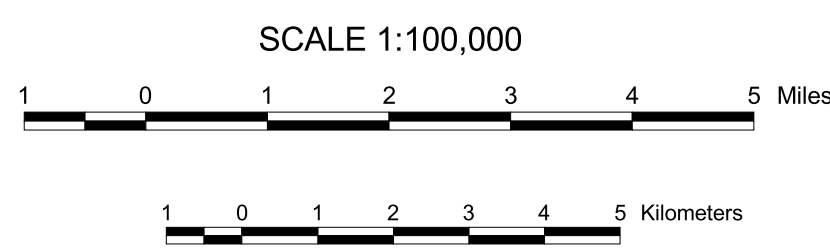
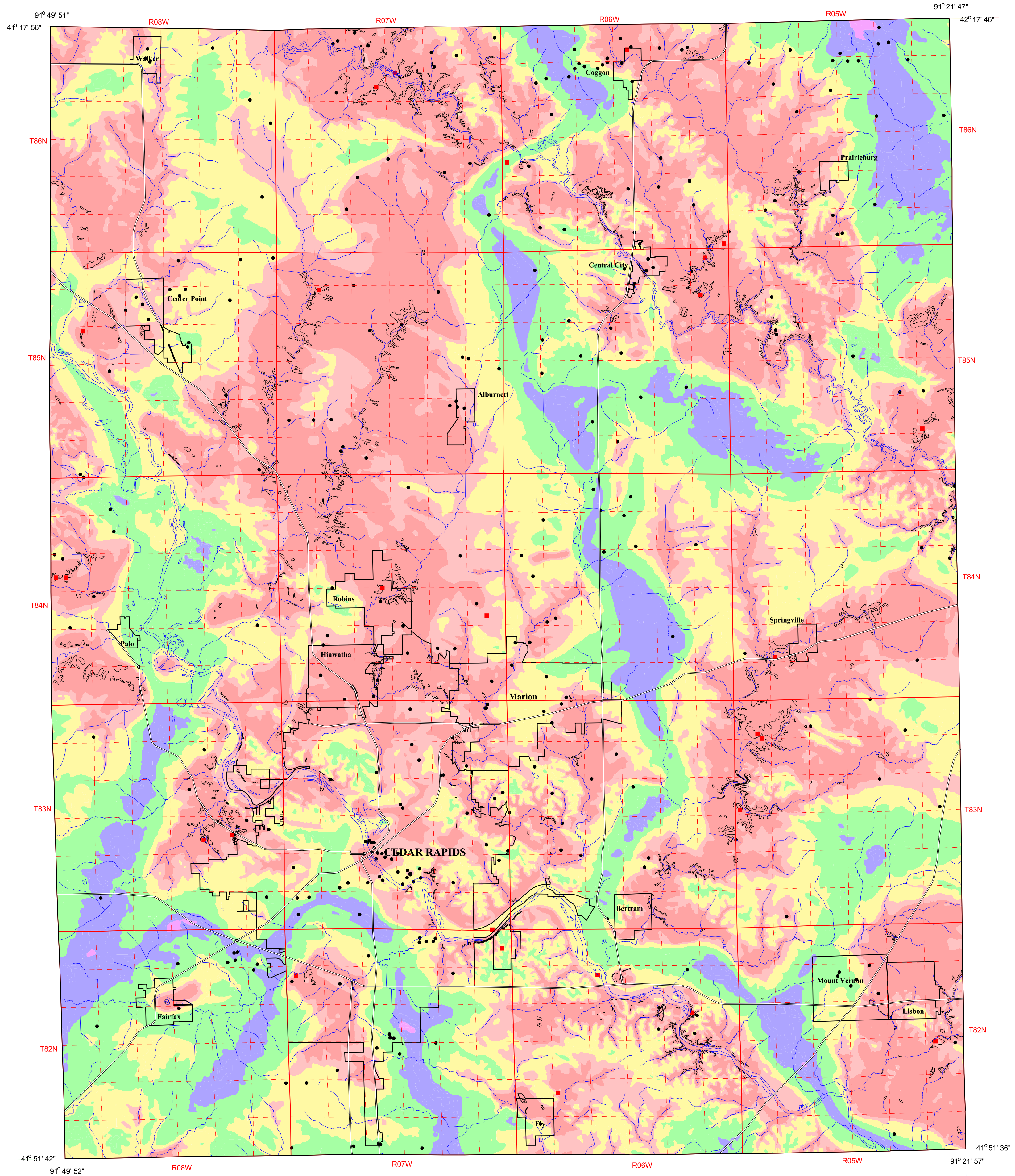


Depth to Bedrock - Linn County, Iowa



- LEGEND**
- Depth to bedrock
- 0 to 25'
 - 25 to 50'
 - 50 to 100'
 - 100 to 200'
 - 200 to 300'
 - greater than 300'
- bedrock outcrop
 - bedrock well data point
 - quarry



Prepared by the Iowa Department of Natural Resources,
Geological Survey Bureau, February 1998.
Open File Map 98-6