

# NE Iowa Watershed and Karst Map

Iowa Geological and Water Survey  
Open File Map OFM-10-7  
November 2010

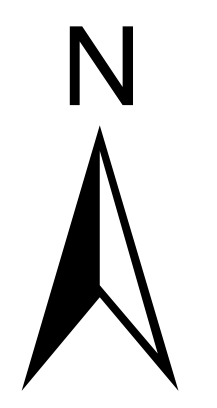
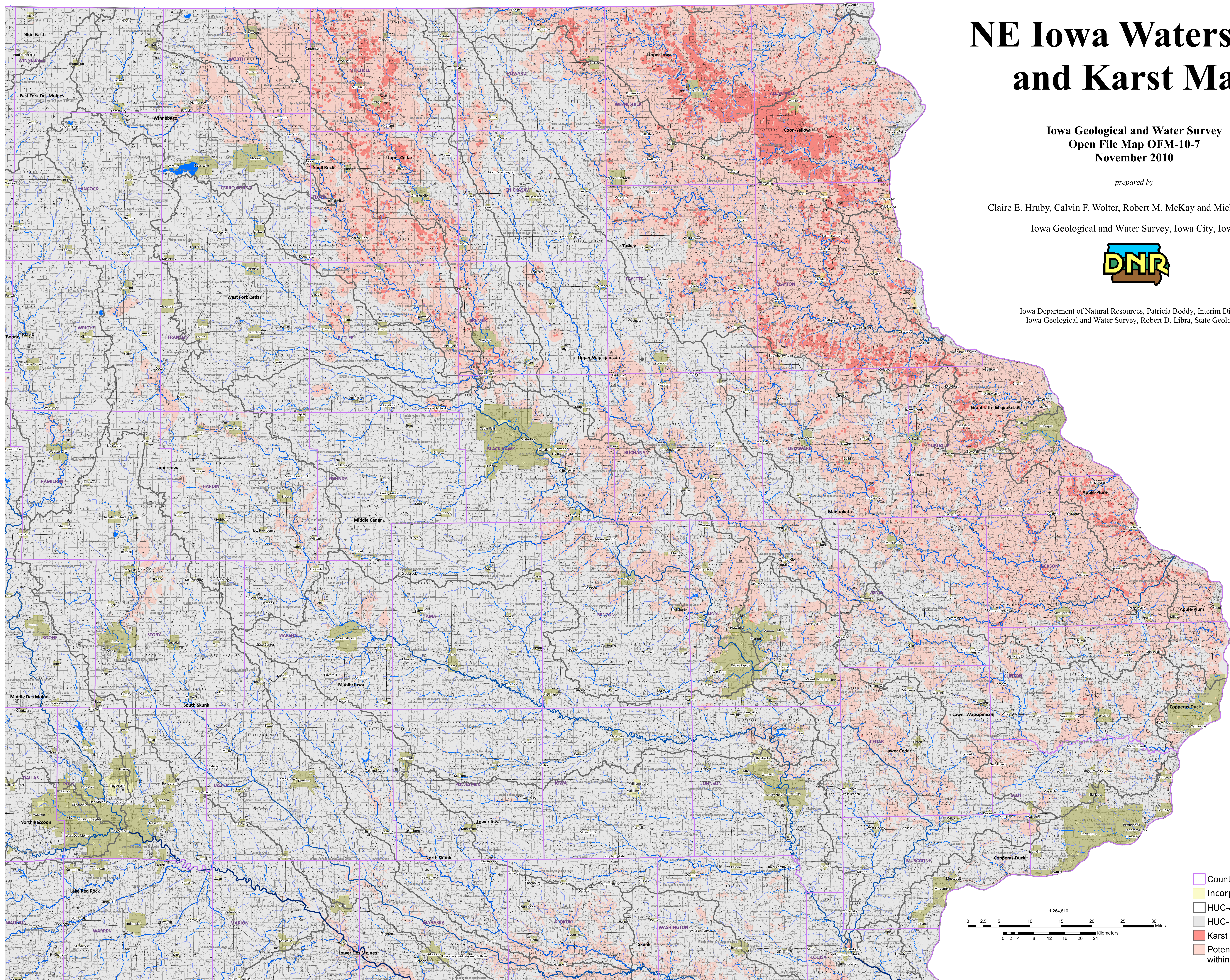
prepared by

Claire E. Hruby, Calvin F. Wolter, Robert M. McKay and Michael J. Bounk

Iowa Geological and Water Survey, Iowa City, Iowa



Iowa Department of Natural Resources, Patricia Boddy, Interim Director  
Iowa Geological and Water Survey, Robert D. Libra, State Geologist



## Legend

- Counties
- Incorporated Cities
- HUC-8 Watersheds
- HUC-12 Subwatersheds
- Karst - Within 1000 ft of sinkhole
- Potential Karst - Carbonate bedrock within 50 ft of the surface

